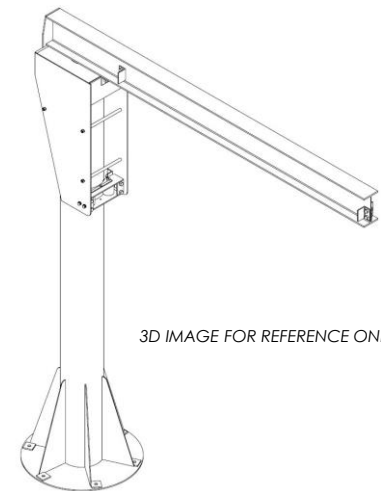
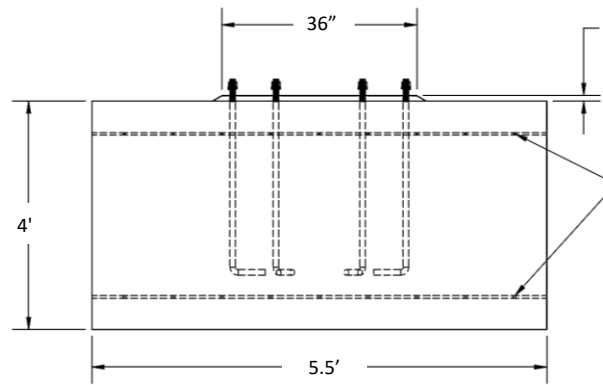
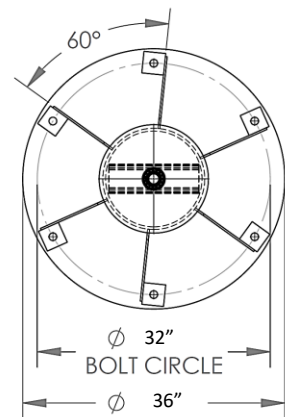
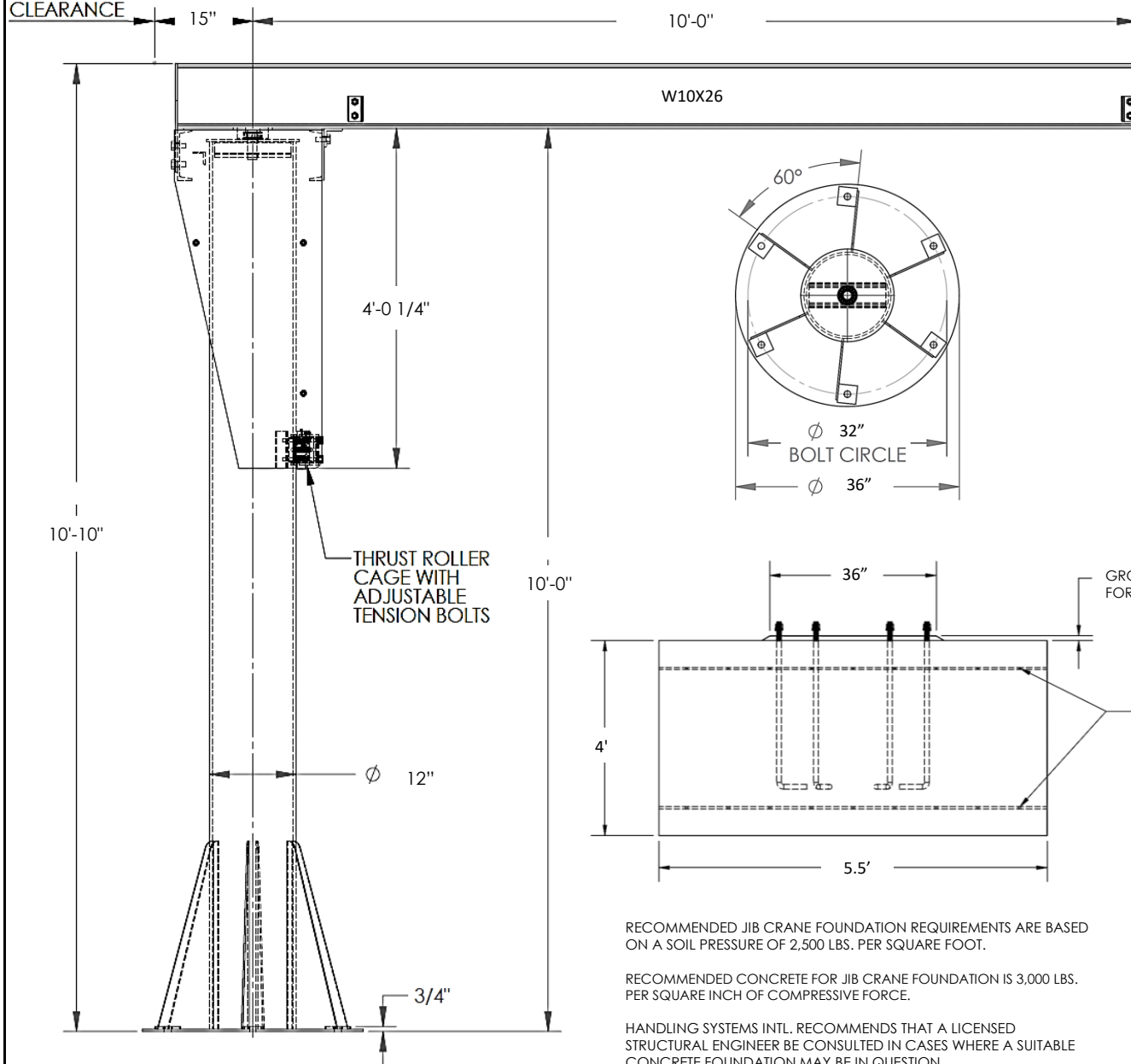


ROTATION CLEARANCE

241590018-DW

**CRANE SPECIFICATIONS:**

CAPACITY: 2000  
 SPAN: 10'-0"  
 HEIGHT UNDER BOOM: 10'-0"  
 ANCHOR PULL FORCE: 3413  
 OVERTURNING MOMENT: 27300  
 APPROX. WEIGHT: 1133  
 OVERALL HEIGHT: 10'-10"



3D IMAGE FOR REFERENCE ONLY

GROUT AS REQUIRED FOR LEVELING

REINFORCING RODS BOTH WAYS.  
 CHECK WITH MANUFACTURER FOR MORE DETAILS.

**PRELIMINARY QUOTE DRAWING**

RECOMMENDED JIB CRANE FOUNDATION REQUIREMENTS ARE BASED ON A SOIL PRESSURE OF 2,500 LBS. PER SQUARE FOOT.

RECOMMENDED CONCRETE FOR JIB CRANE FOUNDATION IS 3,000 LBS. PER SQUARE INCH OF COMPRESSIVE FORCE.

HANDLING SYSTEMS INTL. RECOMMENDS THAT A LICENSED STRUCTURAL ENGINEER BE CONSULTED IN CASES WHERE A SUITABLE CONCRETE FOUNDATION MAY BE IN QUESTION.

**PROPRIETARY & CONFIDENTIAL**  
 THE INFORMATION CONTAINED IN THIS DRAWING IS THE SOLE PROPERTY OF HANDLING SYSTEMS INTERNATIONAL, INC. ANY REPRODUCTION IN PART OR AS A WHOLE WITHOUT THE WRITTEN PERMISSION OF HANDLING SYSTEMS INTERNATIONAL, INC. IS PROHIBITED.



**HEAVY DUTY FREESTANDING JIB CRANE**

MODEL: 351-2000-10-10      DO NOT SCALE FROM DRAWING

**TOLERANCES:** DECIMALS (UNLESS OTHERWISE SPECIFIED) - TWO PLACE (.00) +/- .015 - THREE (.000) +/- .005 ANGLES +/- 30 MINUTES - ALL DIMENSIONS ARE IN INCHES UNLESS OTHERWISE SPECIFIED.