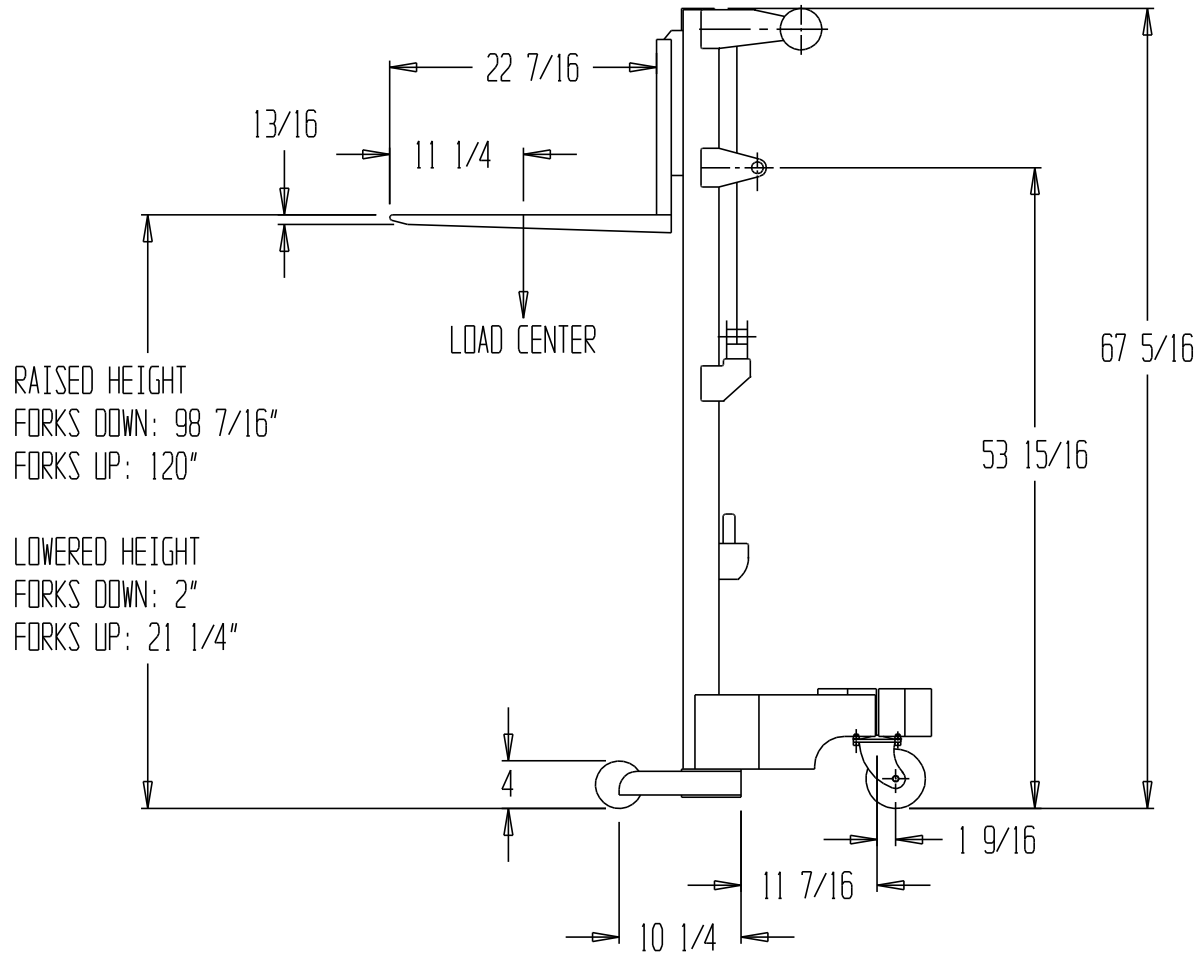


HAND WINCH LIFT TRUCK - A-LIFT-CB-HP



RAISED HEIGHT
 FORKS DOWN: 98 7/16"
 FORKS UP: 120"

LOWERED HEIGHT
 FORKS DOWN: 2"
 FORKS UP: 21 1/4"

STANDARD FEATURES

MODEL NUMBER: A-LIFT-CB-HP
 DURABLE STEEL AND
 ALUMINUM CONSTRUCTION

CAPACITY: 400 LBS

LOWERED HEIGHT

FORKS DOWN: 2"

FORKS UP: 21 1/4"

RAISED HEIGHT

FORKS DOWN: 98 7/16"

FORKS UP: 120"

TWO Ø 5" REAR SWIVEL CASTERS

TWO Ø 4" FRONT WHEELS

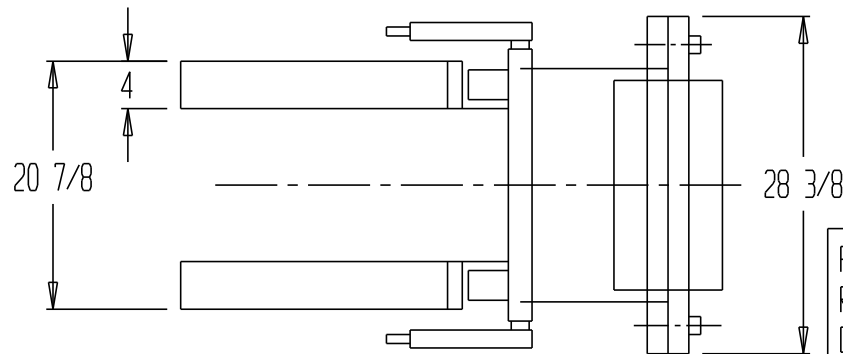
RAISED HT = 97 COMPLETE REVOLUTION ON CRANK HANDLE

BASE OD: 43 1/4" - 28 1/4"

BASE ID: 36 1/2" - 21 1/2"

HANDLE USABLE WIDTH = 18 5/8"

HANDLE IS STEEL W/ FOAM GRIP



PRODUCTION WILL START UPON
 RECEIPT OF SIGNED APPROVAL
 DRAWING

**A
P
P
R
O
V
A
L**

I, THE UNDERSIGNED, AGREE THAT THE PRODUCT AS REPRESENTED SATISFIES DESIGN & DIMENSION REQUIREMENTS. I ALSO ACKNOWLEDGE MY DUTY TO CONFIRM PRODUCT & INSTALLATION COMPLIANCE WITH ALL APPLICABLE FEDERAL, STATE AND LOCAL REGULATIONS & STANDARDS.

UNITS REQUIRING APPROVAL DRAWINGS OR MODIFIED ARE NON-RETURNABLE

As drawn As marked

Signed: _____ Date: _____
 Printed Name _____

LEAD TIME WILL START UPON RECEIPT OF SIGNED APPROVAL DRAWING

SPECIAL FEATURES

NONE

**SPECIAL UNITS ARE NON-RETURNABLE
 *AVAILABLE AT ADDITIONAL COSTS

DISTRIBUTOR'S NAME: VESTIL MFG		P.O.#: _
DRAWN BY: Q. WESTFALL		DATE: 3/21/2007
REFERENCE:	SCALE: _	SALES: _
QUOTED LEADTIME: _	QUOTE #: _	DRWG./FILE NAME: 21-007-070