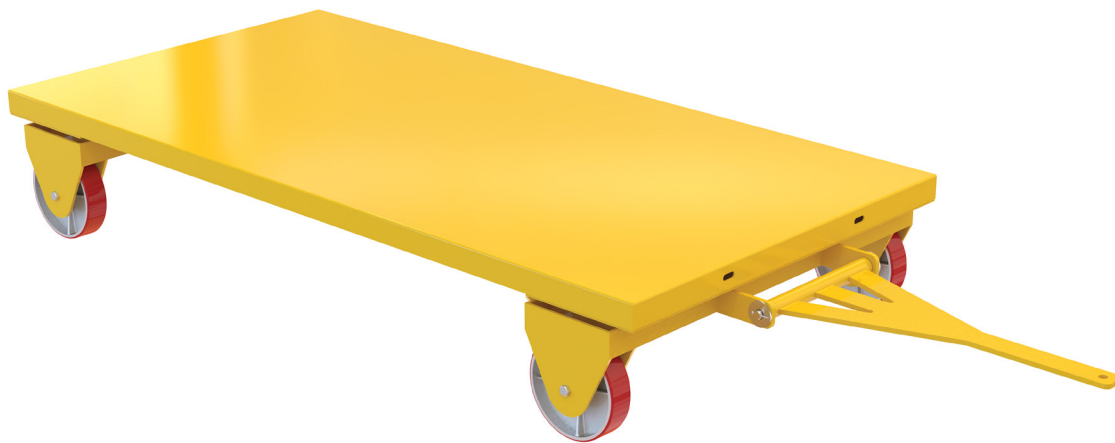




Vestil Manufacturing Corp.
 2999 North Wayne Street, P.O. Box 507, Angola, IN 46703
 Telephone: (260) 665-7586 -or- Toll Free (800) 348-0868
 Fax: (260) 665-1339
 Web: www.vestilmfg.com e-mail: info@vestil.com

ALL WHEEL STEER TRUCK AWST-3672-PU



Receiving Instructions

After delivery, remove the packaging from the product. Inspect the product closely to determine whether it sustained damage during transport. If damage is discovered, record a complete description of it on the bill of lading. If the product is undamaged, discard the packaging.

NOTE: The end-user is solely responsible for confirming that product design, use, and maintenance comply with laws, regulations, codes, and mandatory standards applied where the product is used.

Technical Service & Replacement Parts

For answers to questions not addressed in these instructions and to order replacement parts, labels, and accessories, call our Technical Service and Parts Department at (260) 665-7586. The department can also be contacted online at http://www.vestilmfg.com/parts_info.htm.

Electronic copies of Instruction Manuals

Additional copies of this instruction manual may be downloaded from <https://www.vestil.com/page-manuals.php>.

Table of Contents		Page
Signal Words		2
Safety Instructions		2
Exploded View and Bill of Materials		3
Using the Truck		4
Inspections and Maintenance		4
Labeling Diagram		4
Limited Warranty		5

SIGNAL WORDS

This manual uses SIGNAL WORDS to draw attention to uses of the product that could result in personal injuries, as well as the probable seriousness of those injuries. Other signal words call attention to uses likely to cause property damage. Signal words used in this manual appear below along with the definition of each word.



DANGER Identifies a hazardous situation which, if not avoided, **WILL** result in **DEATH** or **SERIOUS INJURY**. Use of this signal word is limited to the most extreme situations.



WARNING Identifies a hazardous situation which, if not avoided, **COULD** result in **DEATH** or **SERIOUS INJURY**.



CAUTION Indicates a hazardous situation which, if not avoided, **COULD** result in **MINOR** or **MODERATE** injury.



NOTICE Identifies practices likely to result in product/property damage, such as operation that might damage the product.

SAFETY INSTRUCTIONS

Vestil strives to identify all foreseeable hazards associated with the use of its products. However, material handling is dangerous and no manual can address every conceivable risk. The most effective way to prevent injury is to apply sound judgment whenever using this device.



WARNING Improper or careless use of this product could result in death or serious personal injuries.

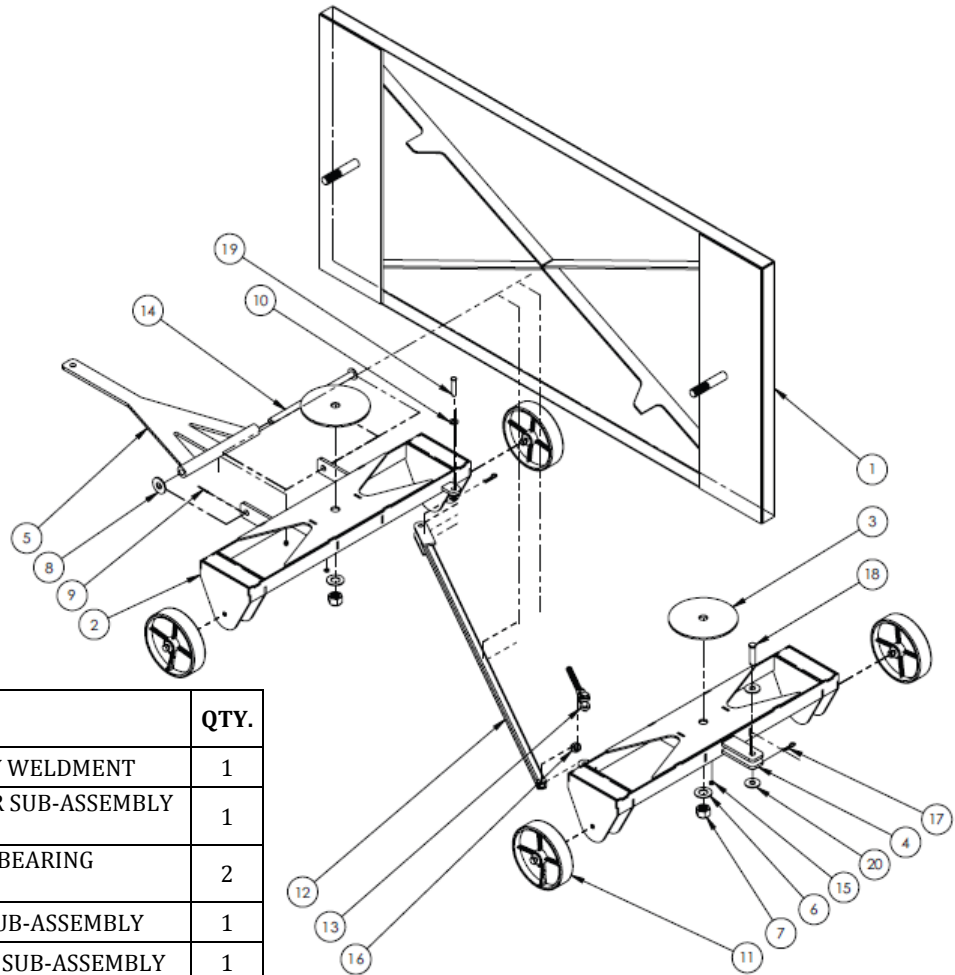
- **Read and understand the entire manual before assembling, installing, using or servicing the product.**

- Center and evenly distribute loads on the surface of the truck.
- Do not attempt to transport unstable, top-heavy, very tall or very long items with the truck. Start and stop slowly and gradually. Apply brakes carefully. Drive slowly through all turns. Only drive on even, level, improved surfaces.
- Read the manual to refresh your understanding of proper use and maintenance procedures.
- **DO NOT** attempt to resolve any problem(s) with the product unless you are qualified to do so and certain that it will be safe to use afterwards.
- **DO NOT** modify the product in any way **UNLESS** you first obtain written approval from Vestil. Unapproved modifications automatically void the **LIMITED WARRANTY** and might make the product unsafe to use.
- **DO NOT** exceed the capacity. Capacity information is provided on label 287. See **LABELING DIAGRAM** on p. 4.
- Inspect the product as directed in **INSPECTIONS AND MAINTENANCE** on p. 4.
 - A. **DO NOT** use this product if the inspection reveals: 1) Cracked, broken or significantly deformed load-bearing members (frame; casters/wheels); 2) cracked welds; 3) corrosion, severe wear, or other condition that affects the structural integrity of the truck. Replace each part that fails to pass an inspection, and **DO NOT** use the product until it is fully restored to normal condition.
 - B. **DO NOT** use the product if any unusual noise or movement is observed. If a malfunction occurs, remove the unit from service and notify your supervisor & maintenance personnel about the issue.
- **DO NOT** use this device **UNLESS** all product labels are readable and undamaged. See **LABELING DIAGRAM** on p. 4.

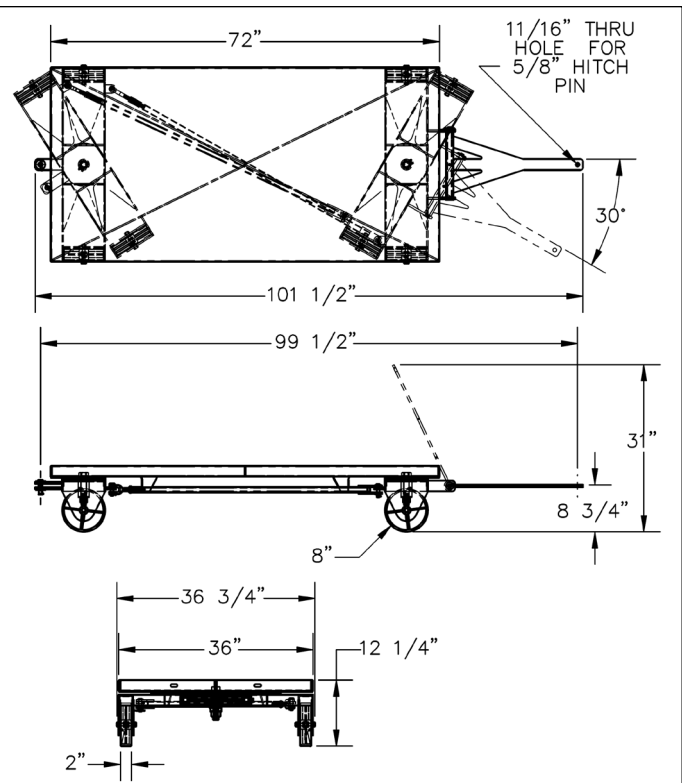


- NOTICE** Proper use, maintenance, and storage are essential for this product to function properly.
- Always use this product in accordance with the instructions in this manual and consistent with any training relevant to machines, devices, etc. used in conjunction with this product.
 - Keep the product clean & dry. Lubricate moving parts.

Exploded View and Bill of Materials



ITEM NO.	PART NO.	DESCRIPTION	QTY.
1	16-513-045	DECK ASSEMBLY WELDMENT	1
2	16-514-348	FRONT COUPLER SUB-ASSEMBLY WELDMENT	1
3	16-115-001	UHMW THRUST BEARING WASHER	2
4	16-514-349	REAR COULER SUB-ASSEMBLY	1
5	16-514-351	FRAME TONGUE SUB-ASSEMBLY	1
6	33095	SAE FLAT WASHER, 1 1/16 ID X 2 OD	2
7	37089	STEEL NYLON-INSERT LOCK NUTS, UNS	2
8	33018	USS FLAT WASHER, Z-PLATED, 3/4"	1
9	65078	EXTENDED PRONG COTTER PIN, ZINC FINISH, 1/8" X 1 1/2"	1
10	33011	FLAT WASHER, USS, PLAIN FINISH, 1/2"	2
11	16-132-039-002	8" X 2" POLY-ON-STEEL WHEEL WITH 1/2" AXLE	4
12	16-514-350	TIE ROD FRAME SUB-ASSEMBLY WELDMENT	1
13	99-145-184	STEEL TURNBUCKLE WITH CLEVIS	1
14	16-612-005	PIN TONGUE SUB-ASSEMBLY WELDMENT	1
15	58794	GREESE ZERK, 1/8 NPT	3
16	36413	GRADE 8 NUT, 5/8-11	1
17	45288	ZINC PLATED STEEL HAIRPIN COTTER	2
18	99-112-079	CARBON STEEL CLEVIS PIN, 5/8" X 2 1/4"	1
19	66117	CLEVIS PIN, 1/2 X 2 1/4	1
20	33015	USS FLAT WASHER, PLAIN FINISH, 5/8" X 1.750	2



USING THE TRUCK

Attach the tongue of the truck to the hitch of a tow vehicle. Center and evenly distribute loads on the truck surface. Immobilize loads on, and strap loads to, the truck to prevent them from moving while the truck is in motion. Do not attempt to transport unstable, top-heavy, very tall or very long items with the truck. Start and stop slowly and gradually. Apply brakes carefully. Drive slowly through all turns. Only drive on even, level, improved surfaces.

INSPECTIONS AND MAINTENANCE

Written Record — Before using the product for the first time, make a written record of its appearance. Describe the condition of the frame, hardware, and mechanisms. Take photographs of each feature and add them to the record. Take photographs of all labels applied to the product. Describe where each label is located. ***This record establishes satisfactory condition.***

Inspections and repairs should only be performed by qualified persons. Compare the results of each inspection to the WRITTEN RECORD. Do not use the system unless all parts are in satisfactory condition. Replace parts that are not in satisfactory condition before returning the system to service. **DON'T GUESS! If you have any questions about the condition of your product, contact the TECHNICAL SERVICE department** (see cover page of this manual). Never make temporary repairs of damaged or missing parts. Only use manufacturer-approved replacement parts.

Before each use — Perform the following inspections.

1. Check the surface of the product for dirt or other matter. Clean the surfaces.
2. Examine hardware & fasteners, including but not limited to bolts, nuts, and pins. Replace damaged, worn, or corroded hardware.
3. Examine frame elements for wear, breakages, corrosion/rusting, damage, and metal fatigue.
4. Check all labels. Replace labels that are damaged or not easily readable.
5. Examine the whole structure for rusting/metal erosion, rot, thinned regions. If rusting is purely superficial, remove the rust/corrosion with a steel bristle brush or steel wool. Clean the affected area and apply touchup paint. If rusting, rot, or thinning has weakened the material, contact **TECHNICAL SERVICE** for advice.

LABELING DIAGRAM

Label content and location are subject to change so your product might not be labeled exactly as shown (below). Compare this labeling diagram to the **RECORD**. If actual labeling and/or label placement differs from the diagram, contact **TECHNICAL SERVICE** to determine whether the labeling of your product requires updating. During the lifetime of this gate system, replace all labels that are damaged, missing, or not easily readable (e.g. faded). To order replacement labels, contact the **TECHNICAL SERVICE** and parts department online at <https://www.vestil.com/page-parts-request.php>. Alternatively, you may request replacement parts and/or service by calling (260) 665-7586 and asking the operator to connect you to the Parts Dept.

MODEL/MODÉLO/MODÈLE _____
 STATIC CAPACITY (evenly distributed) _____ lbs.
 LA CAPACIDAD CONSTANTE (distribuida uniformemente) _____ kgs.
 CAPACITÉ STATIQUE (distribuée régulièrement) _____ kgs.
 SERIAL/SERIE/SÉRIE _____ 287 REV.0002

Label 287



⚠ WARNING	⚠ ADVERTENCIA	⚠ AVERTISSEMENT
Do not operate or move with unstable loads DO NOT LOAD beyond rated capacity DISTRIBUTE LOAD EVENLY DO NOT sit or ride	No use a mueva con cargas inestables No cargue mas de la capacidad tasada DISTRIBUYA LA CARGA A NIVEL NO SE SIENTE o vaya en el carro	Ne pas utiliser avec une charge instable NE PAS CHARGER au-delà du débit nominale DISTRIBUER la charge régulièrement NE PAS VOUS ASSEoir OU VOUS PROMENER sur le chariot



LIMITED WARRANTY

Vestil Manufacturing Corporation (“Vestil”) warrants this product to be free of defects in material and workmanship during the warranty period. Our warranty obligation is to provide a replacement for a defective, original part covered by the warranty after we receive a proper request from the Warrantee (you) for warranty service.

Who may request service?

Only a warrantee may request service. You are a warrantee if you purchased the product from Vestil or from an authorized distributor AND Vestil has been fully paid.

Definition of “original part”?

An original part is a part used to make the product as shipped to the Warrantee.

What is a “proper request”?

A request for warranty service is proper if Vestil receives: 1) a photocopy of the Customer Invoice that displays the shipping date; AND 2) a written request for warranty service including your name and phone number. Send requests by one of the following methods:

<u>US Mail</u>	<u>Fax</u>	<u>Email</u>
Vestil Manufacturing Corporation 2999 North Wayne Street, PO Box 507 Angola, IN 46703	(260) 665-1339 <u>Phone</u> (260) 665-7586	info@vestil.com Enter “Warranty service request” in subject field.

In the written request, list the parts believed to be defective and include the address where replacements should be delivered. After Vestil receives your request for warranty service, an authorized representative will contact you to determine whether your claim is covered by the warranty. Before providing warranty service, Vestil will require you to send the entire product, or just the defective part (or parts), to its facility in Angola, IN.

What is covered under the warranty?

The warranty covers defects in the following original, dynamic parts: motors, hydraulic pumps, motor controllers, and cylinders. It also covers defects in original parts that wear under normal usage conditions (“wearing parts”), such as bearings, hoses, wheels, seals, brushes, and batteries.

How long is the warranty period?

The warranty period for original dynamic components is 1 year. For wearing parts, the warranty period is 90 days. Both warranty periods begin on the date Vestil ships the product to the Warrantee. If the product was purchased from an authorized distributor, the periods begin when the distributor ships the product. Vestil may, at its sole discretion, extend a warranty period for products shipped from authorized distributors by up to 30 days to account for shipping time.

If a defective part is covered by the warranty, what will Vestil do to correct the problem?

Vestil will provide an appropriate replacement for any *covered* part. An authorized representative of Vestil will contact you to discuss your claim.

What is not covered by the warranty?

The Warrantee (you) are responsible for paying labor costs and freight costs to return the product to Vestil for warranty service.

Events that automatically void this Limited Warranty.

- Misuse;
- Negligent assembly, installation, operation or repair;
- Installation/use in corrosive environments;
- Inadequate or improper maintenance;
- Damage sustained during shipping;
- Collisions or other accidents that damage the product;
- Unauthorized modifications: Do not modify the product IN ANY WAY without first receiving written authorization from Vestil.

Do any other warranties apply to the product?

Vestil Manufacturing Corp. makes no other express warranties. All implied warranties are disclaimed to the extent allowed by law. Any implied warranty not disclaimed is limited in scope to the terms of this Limited Warranty. Vestil makes no warranty or representation that this product complies with any state or local design, performance, or safety code or standard. Noncompliance with any such code or standard is not a defect in material or workmanship.