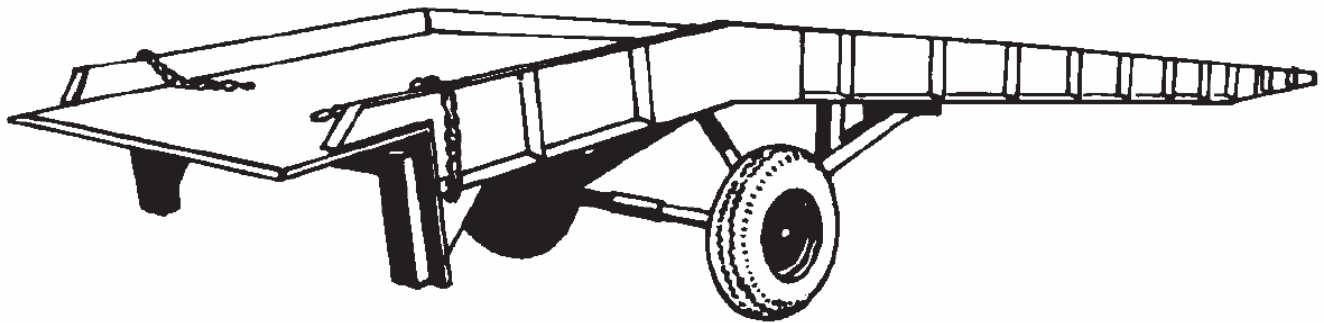




## YR-, SY-, & AY-Series Steel and Aluminum Yard Ramps Instruction Manual



Vestil Manufacturing Corp.

2999 North Wayne Street, P.O. Box 507, Angola, IN 46703

Telephone: (260) 665-7586 -or- Toll Free (800) 348-0868 Fax: (260) 665-1339

Url: [www.vestilmfg.com](http://www.vestilmfg.com) Email: [sales@vestil.com](mailto:sales@vestil.com)

**NOTE:** Compliance with statues, regul ations, and codes enforced in the location where the product is *used* is exclusively the responsibility of t he end user. Compliance with any “Consensus Standard” published by a non-government organization like ANSI, CSA, or ISO is voluntary unless incorporated into law.

### Table of Contents

Product Introduction.....	2
Safety Principles.....	3
Use Instructions.....	4 - 5

### Table of Figures

Fig. 1 Parts diagram.....	5
Fig. 2 Label placement diagram.....	6

This manual uses SIGNAL WORDS to classify personal injury risks or situations that might lead to property damage, as well as to draw attention to safety message(s). The reader must understand that each signal word indicates the seriousness of the described hazard.

	Identifies a hazardous situation which, if not avoided, <b>WILL</b> result in <b>DEATH</b> or <b>SERIOUS INJURY</b> . Use of this signal word is limited to the most extreme situations.
	Identifies a hazardous situation which, if not avoided, <b>COULD</b> result in <b>DEATH</b> or <b>SERIOUS INJURY</b> .
	Indicates a hazardous situation which, if not avoided, <b>COULD</b> result in <b>MINOR</b> or <b>MODERATE</b> injury.
	Identifies practices likely to result in product/property damage, such as operation that might damage the product.

## Product Introduction:

Thank you for purchasing a yard ramp from Vestil Manufacturing Corporation. Our ramps are rigorously engineered for durability, quality, and safety. Specifications for each yard ramp variant appear in the following table:

Model	Uniform Capacity in Pounds (~kg)	Overall Width in Inches (~cm)	Usable Width in Inches (~cm)	Length in Feet (~m)	Net Weight in Pounds (~kg)
YR-16-7230	16,000 (~7,273kg)	72 (183cm)	67 (170.2cm)	30 (9.1m)	3780 (1718kg)
YR-16-8430	16,000 (~7,273kg)	84 (213.4cm)	78 (198.1cm)	30 (9.1m)	4095 (1861.4kg)
YR-16-7236	16,000 (~7,273kg)	72 (183cm)	67 (170.2cm)	36 (11m)	4725 (2147.7kg)
YR-16-8436	16,000 (~7,273kg)	84 (213.4cm)	78 (198.1cm)	36 (11m)	5040 (2291kg)
YR-20-7230	20,000 (~9,091kg)	73 (185.4cm)	67 (170.2cm)	30 (9.1m)	4515 (2052.3kg)
YR-20-8530	20,000 (~9,091kg)	85 (216cm)	78 (198.1cm)	30 (9.1m)	4830 (2195.5kg)
YR-20-7336	20,000 (~9,091kg)	73 (185.4cm)	67 (170.2cm)	36 (11m)	5565 (2529.5kg)
YR-20-8536	20,000 (~9,091kg)	85 (216cm)	78 (198.1cm)	36 (11m)	5985 (2720.5kg)
YR-25-7330	25,000 (~11,364kg)	73 (185.4cm)	67 (170.2cm)	30 (9.1m)	4725 (2147.7kg)
YR-25-8530	25,000 (~11,364kg)	85 (216cm)	78 (198.1cm)	30 (9.1m)	5040 (2290.9kg)
YR-25-7336	25,000 (~11,364kg)	73 (185.4cm)	67 (170.2cm)	36 (11m)	5880 (2672.7kg)
YR-25-8536	25,000 (~11,364kg)	85 (216cm)	78 (198.1cm)	36 (11m)	6300 (2863.6kg)
YR-30-7330	30,000 (~13,636kg)	73 (185.4cm)	67 (170.2cm)	30 (9.1m)	4935 (2243.2kg)
YR-30-8530	30,000 (~13,636kg)	85 (216cm)	78 (198.1cm)	30 (9.1m)	5250 (2386.4kg)
YR-30-7336	30,000 (~13,636kg)	73 (185.4cm)	67 (170.2cm)	36 (11m)	6300 (2863.6kg)
YR-30-8536	30,000 (~13,636kg)	85 (216cm)	78 (198.1cm)	36 (11m)	6720 (3054.5kg)
YRD-16-7236-H	16,000 (~7,273kg)	72 (183cm)	66 (167.6cm)	36 (11m)	5670 (2577.3kg)
YRD-16-8436-H	16,000 (~7,273kg)	84 (213.4cm)	78 (198.1cm)	36 (11m)	6090 (2768.2kg)
YRD-20-7336-H	20,000 (~9,091kg)	73 (185.4cm)	66 (167.6cm)	36 (11m)	5880 (2672.7kg)
YRD-20-8536-H	20,000 (~9,091kg)	85 (216cm)	78 (198.1cm)	36 (11m)	6300 (2863.6kg)
YRD-25-7336-H	25,000 (~11,364kg)	73 (185.4cm)	66 (167.6cm)	36 (11m)	6090 (2768.2kg)
YRD-25-8536-H	25,000 (~11,364kg)	85 (216cm)	78 (198.1cm)	36 (11m)	6510 (2959.1kg)
YRD-30-7336-H	30,000 (~13,636kg)	73 (185.4cm)	66 (167.6cm)	36 (11m)	6300 (2863.6kg)
YRD-30-8536-H	30,000 (~13,636kg)	85 (216cm)	78 (198.1cm)	36 (11m)	6720 (3054.5kg)
YRDS-16-7236-M	16,000 (~7,273kg)	72 (183cm)	66 (167.6cm)	36 (11m)	5905 (2684.1kg)
YRDS-16-8536-M	16,000 (~7,273kg)	85 (216cm)	78 (198.1cm)	36 (11m)	6325 (2875kg)
YRDS-20-8536-M	20,000 (~9,091kg)	85 (216cm)	78 (198.1cm)	36 (11m)	6535 (2970.5kg)
YRDS-16-7236-H	16,000 (~7,273kg)	72 (183cm)	66 (167.6cm)	36 (11m)	5890 (2677.3kg)
YRDS-16-8536-H	16,000 (~7,273kg)	85 (216cm)	78 (198.1cm)	36 (11m)	6310 (2868.2kg)
YRDS-20-8536-H	20,000 (~9,091kg)	85 (216cm)	78 (198.1cm)	36 (11m)	6520 (2963.6kg)
<b>Aluminum yard ramps with steel grating</b>					
SY-167230	16,000 (~7,273kg)	74 (188cm)	66 (167.6cm)	30 (9.1m)	3518 (1599.1kg)
SY-168430	16,000 (~7,273kg)	86 (218.4cm)	78 (198.1cm)	30 (9.1m)	4043 (1837.7kg)
SY-169330	16,000 (~7,273kg)	95 (241.3cm)	87 (221cm)	30 (9.1m)	4515 (2052.3kg)
SY-167236-L	16,000 (~7,273kg)	74 (188cm)	66 (167.6cm)	36 (11m)	4305 (1956.8kg)
SY-168436-L	16,000 (~7,273kg)	86 (218.4cm)	78 (198.1cm)	36 (11m)	4830 (2195.5kg)
SY-169336-L	16,000 (~7,273kg)	95 (241.3cm)	87 (221cm)	36 (11m)	5303 (2410.5kg)
SY-207230	20,000 (~9,091kg)	74 (188cm)	66 (167.6cm)	30 (9.1m)	3623 (1646.8kg)
SY-208430	20,000 (~9,091kg)	86 (218.4cm)	78 (198.1cm)	30 (9.1m)	4148 (1885.5kg)
SY-209330	20,000 (~9,091kg)	95 (241.3cm)	87 (221cm)	30 (9.1m)	4620 (2100kg)
SY-207236-L	20,000 (~9,091kg)	74 (188cm)	66 (167.6cm)	36 (11m)	4410 (2004.5kg)
SY-208436-L	20,000 (~9,091kg)	86 (218.4cm)	78 (198.1cm)	36 (11m)	4935 (2243.2kg)
SY-209336-L	20,000 (~9,091kg)	95 (241.3cm)	87 (221cm)	36 (11m)	5408 (2458.2kg)
SY-257230	25,000 (~11,364kg)	74 (188cm)	66 (167.6cm)	30 (9.1m)	3675 (1670.5kg)
SY-258430	25,000 (~11,364kg)	86 (218.4cm)	78 (198.1cm)	30 (9.1m)	4200 (1909.1kg)
SY-259330	25,000 (~11,364kg)	95 (241.3cm)	87 (221cm)	30 (9.1m)	4725 (2147.7kg)
SY-257236-L	25,000 (~11,364kg)	74 (188cm)	66 (167.6cm)	36 (11m)	4463 (2028.6kg)
SY-258436-L	25,000 (~11,364kg)	86 (218.4cm)	78 (198.1cm)	36 (11m)	4988 (2267.3kg)
SY-259336-L	25,000 (~11,364kg)	95 (241.3cm)	87 (221cm)	36 (11m)	5513 (2505.9kg)
SY-307230	30,000 (~13,636kg)	74 (188cm)	66 (167.6cm)	30 (9.1m)	3728 (1694.5kg)
SY-308430	30,000 (~13,636kg)	86 (218.4cm)	78 (198.1cm)	30 (9.1m)	4253 (1933.2kg)
SY-307236-L	30,000 (~13,636kg)	74 (188cm)	66 (167.6cm)	36 (11m)	4515 (2052.3kg)
SY-308436-L	30,000 (~13,636kg)	86 (218.4cm)	78 (198.1cm)	36 (11m)	5040 (2290.9kg)
<b>Aluminum yard ramps with aluminum grating</b>					
AY-167230	16,000 (~7,273kg)	74 (188cm)	66 (167.6cm)	30 (9.1m)	2783 (1265kg)
AY-168430	16,000 (~7,273kg)	86 (218.4cm)	78 (198.1cm)	30 (9.1m)	3150 (1431.8kg)
AY-169330	16,000 (~7,273kg)	95 (241.3cm)	87 (221cm)	30 (9.1m)	3465 (1575kg)
AY-167236-L	16,000 (~7,273kg)	74 (188cm)	66 (167.6cm)	36 (11m)	3360 (1527.3kg)
AY-168436-L	16,000 (~7,273kg)	86 (218.4cm)	78 (198.1cm)	36 (11m)	3728 (1694.5kg)

AY-169336-L	16,000 (~7,273kg)	95 (241.3cm)	87 (221cm)	36 (11m)	3990 (1813.6kg)
AY-207230	20,000 (~9,091kg)	74 (188cm)	66 (167.6cm)	30 (9.1m)	2888 (1312.7kg)
AY-208430	20,000 (~9,091kg)	86 (218.4cm)	78 (198.1cm)	30 (9.1m)	3255 (1479.5kg)
AY-209330	20,000 (~9,091kg)	95 (241.3cm)	87 (221cm)	30 (9.1m)	3570 (1622.7kg)
AY-207236-L	20,000 (~9,091kg)	74 (188cm)	66 (167.6cm)	36 (11m)	3465 (1575kg)
AY-208436-L	20,000 (~9,091kg)	86 (218.4cm)	78 (198.1cm)	36 (11m)	3833 (1742.3kg)
AY-209336-L	20,000 (~9,091kg)	95 (241.3cm)	87 (221cm)	36 (11m)	4095 (1861.4kg)
AY-257230	25,000 (~11,364kg)	74 (188cm)	66 (167.6cm)	30 (9.1m)	2940 (1336.4kg)
AY-258430	25,000 (~11,364kg)	86 (218.4cm)	78 (198.1cm)	30 (9.1m)	3308 (1503.6kg)
AY-259330	25,000 (~11,364kg)	95 (241.3cm)	87 (221cm)	30 (9.1m)	3675 (1670.5kg)
AY-257236-L	25,000 (~11,364kg)	74 (188cm)	66 (167.6cm)	36 (11m)	3578 (1626.4kg)
AY-258436-L	25,000 (~11,364kg)	86 (218.4cm)	78 (198.1cm)	36 (11m)	3885 (1765.9kg)
AY-259336-L	25,000 (~11,364kg)	95 (241.3cm)	87 (221cm)	36 (11m)	4200 (1909.1kg)
AY-307230	30,000 (~13,636kg)	74 (188cm)	66 (167.6cm)	30 (9.1m)	3092 (1405.5kg)
AY-308430	30,000 (~13,636kg)	86 (218.4cm)	78 (198.1cm)	30 (9.1m)	3360 (1527.3kg)
AY-307236-L	30,000 (~13,636kg)	74 (188cm)	66 (167.6cm)	36 (11m)	3570 (1622.7kg)
AY-308436-L	30,000 (~13,636kg)	86 (218.4cm)	78 (198.1cm)	36 (11m)	3938 (1790kg)

### Steel yard ramp options

Model designation	Description	Net weight in pounds (~kg)
YR-HL	Pneumatic tire and hand pump hydraulic lift (5mph max. tow speed) Not available on YRD models	230 (105.5kg)
YR-HL-DC	Pneumatic tire and 12V DC Hydraulic lift (5mph max. tow speed) Not available on YRD models	288 (130.9kg)
YR-FS	Fork lift pickup slots [7½in. (W) x 2½in. (H) usable on 24in. centers]	460 (209.1kg)
YR-TB	Fork positioning loop	25 (11.4kg)
YR-TB-H	Tow bar hitch	145 (65.9kg)
YR-HDRL	42in. (H) handrails with 21in. welded midrail (not removable)	12 lb/ft. (17.9kg/m)
YRD-MD	Mechanical dockleveler in lieu of hydraulic (on 16,000 lb.; 20,000 lb.; & 25,000 lb. capacity models)	n/a
YR-DH	Openings in lip to lag ramp to top of dock	n/a

### Aluminum yard ramp options

AYR-HL-DC	12V DC hydraulic lift (includes on-board charger)	50 (22.7kg)
AYR-TB	Fork positioning loop	25 (11.4kg)
AYR-TB-H	Tow bar fitch	145 (65.9kg)
AYR-HDRL	42in. high handrails with 21in. welded midrail (not removable)	230 (105.5kg)
AYR-CRB6	6in. curb height	
AYR-YEL	Yellow safety curbs	
AY-PNTR	Pneumatic tire option (service range 40in. – 60in.)	
AYR-DH	Openings in lip to lag ramp to top of dock	

## Safety Guidelines

**Failure to read and understand the instructions included in this manual before using or servicing the yard ramp constitutes misuse and automatically voids the limited warranty.** If questions remain after you finish reading the manual, ask your employer or supervisor for assistance. DO NOT attempt to resolve any problems with the ramp unless you are authorized to do so and certain that it will be safe to use afterwards.

### **DANGER**

Electrocution might result if the yard ramp contacts electrified wires. Reduce the likelihood that persons using the ramp or bystanders might be electrocuted by applying **common sense**:

➤ DO not use the crane in an area where it will contact electrified wires;

### **WARNING**

Material handling is dangerous. Improper or careless operation might result in serious personal injuries sustained by the ramp user(s) and by standers. Always follow the procedures for loading and unloading trailers applied at your worksite and apply the following:

- Before using the ramp, inspect the usage area for unusual conditions that might require special precautions.
- ALWAYS inspect the ramp before each use. Inspect the ramp and remove it from service if any of the following are noticed:
  - Broken welds, stress cracks, warps or bends, indications of metal fatigue, etc.
  - Severely damaged or deteriorated bumpers;
  - Significant damage to the ramp raising/lowering and dock leveler mechanisms that prevents either mechanism from operating normally.
- DO NOT apply more weight to the ramp than the uniform capacity of your model (see Specifications Table, p. 2-3).

**⚠WARNING** (Continued from p. 3)

- DO NOT crawl beneath or travel under the ramp while the ramp is in use, or allow others to do so.
- Before moving the ramp or Inform all persons in the area that you are going to use the ramp; instruct them to stay clear of the device during use.
- DO NOT allow people to ride on the ramp while moving it.
- DO NOT stand on the ramp while the vehicle to be unloaded is brought into contact with the ramp bumpers. Direct the driver of the vehicle from the side of the ramp, i.e. where you can be seen by the driver at all times.
- ALWAYS verify that there is AT LEAST 4in. (~10cm ) of overlap between the front edge of the lip of the ramp (or dock leveler) and the edge of the trailer bed (or sill of the transport vehicle).
- DO NOT attempt to position the ramp by pushing it from the side, unless your ramp is equipped with the YR-FS (fork lift pickup slots) option! Pushing the ramp from the side is likely to damage the wheels and/or the landing gear.
- DO NOT use the ramp if any product label (see p. 6) is unreadable, damaged, or absent.

## Use instructions

### A. YR-series dock levelers with manual height adjustment mechanism

- 1) Position the yard ramp on a level surface; then adjust the height of the elevated end of the yard ramp to be roughly 2in. above the trailer bed by rotating the handle clockwise.
- 2) Slowly back the trailer towards the yard ramp until it contacts the bumpers.
- 3) Turn off the engine and set the parking brake of the tow vehicle.
- 4) Immobilize the trailer with wheel chocks.
- 5) Attach the trailer to the yard ramp with the safety chains.
- 6) Turn the handle counterclockwise to retract the ramp wheels and landing gear. As the wheels retract, the ramp will lower. Continue to turn the handle until the ramp makes solid contact with the bed of the trailer. Continue turning the handle until the ramp wheels are no more than 2-3inches from the ground to allow the ramp to float during trailer loading/unloading operations. As weight is applied to the trailer, it might be necessary to adjust the height of the ramp wheels to maintain 2-3in. clearance between them and the ground.
- 7) When the trailer is loaded/unloaded, turn the handle clockwise until the ramp is raised about 2in. above the trailer, and then disconnect the safety chains.

### B. YR-HL, SY-, and AY-series ramps with manual hydraulic pump and pneumatic tires

- 1) Close the hydraulic release valve, or verify that the release valve is already closed; then work the handle back and forth to adjust the height of the elevated end of the ramp to be at least 2in. above the trailer bed.
- 2) Slowly back the trailer towards the yard ramp until it contacts the bumpers.
- 3) Turn off the engine and set the parking brake of the tow vehicle.
- 4) Immobilize the trailer with wheel chocks.
- 5) Attach the trailer to the yard ramp with the safety chains.
- 6) Slowly open the release valve until the ramp begins to slowly lower towards the lip of the ramp. Leave the valve open after the ramp makes solid contact with the bed of the trailer to allow the ramp to float during trailer loading/unloading operations.
- 7) When the trailer is loaded/unloaded, close the release valve and ratchet the pump handle back-and-forth until the ramp is about 2in. above the bed of the trailer, and then disconnect the safety chains.

### C. YRD-series yard ramp with mechanical dock leveler

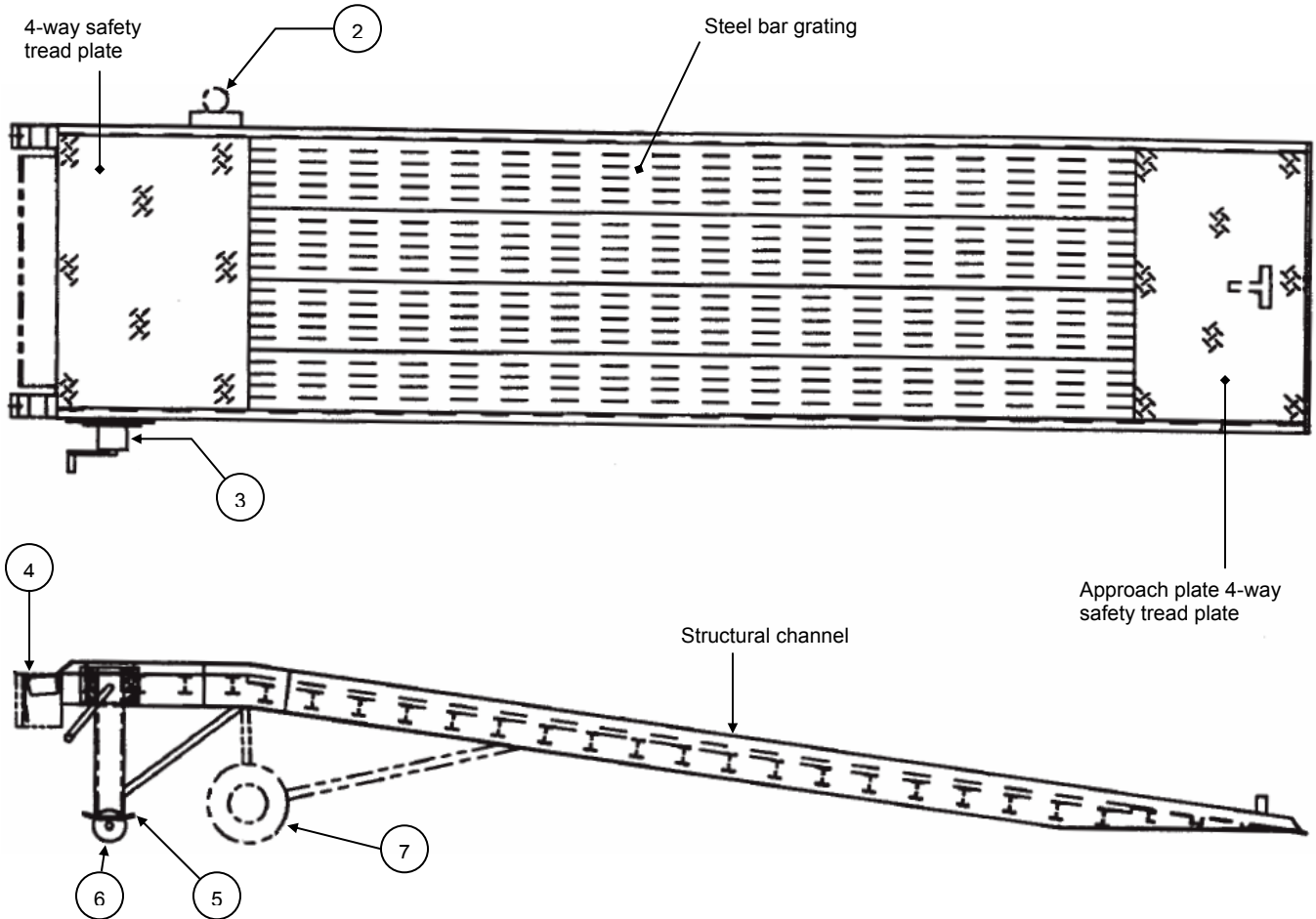
- 1) Position the yard ramp on a level surface; then adjust the height of the elevated end of the yard ramp to be roughly 2in. above the trailer bed by rotating the handle clockwise.
- 2) Slowly back the trailer towards the yard ramp until it contacts the bumpers.
- 3) Turn off the engine and set the parking brake of the tow vehicle.
- 4) Immobilize the trailer with wheel chocks.
- 5) Attach the trailer to the yard ramp with the safety chains.
- 6) Rest the dock leveler on the trailer bed:
  - a) Remove the pipe lever from its storage location (in the bumper box) and insert the end into the socket;
  - b) Face the trailer and pull the lever in one smooth, continuous stroke towards you to raise the dock leveler; then
  - c) Push the lever forward to release the leveler. The leveler plate will fall onto the bed of the trailer as you push the lever forward.
- 7) To return the leveler to its stored/unused configuration, simply drive the trailer away from the dock and let the leveler fall.

### D. YRD-PP-series yard ramp with hydraulic dock leveler

- 1) Position the yard ramp on a level surface; then adjust the height of the elevated end of the yard ramp to be roughly 2in. above the trailer bed by rotating the handle clockwise.

- 2) Slowly back the trailer towards the yard ramp until it contacts the bumpers.
- 3) Turn off the engine and set the parking brake of the tow vehicle.
- 4) Immobilize the trailer with wheel chocks.
- 5) Attach the trailer to the yard ramp with the safety chains.
- 6) Close the fluid return valve on the dock leveler pump by turning it clockwise; then work the pump handle back-and-forth until the dock leveler clears the trailer and fully extends.
- 7) When the trailer is loaded/unloaded, turn the handle clockwise until the ramp is raised about 2in. above the trailer, and then disconnect the safety chains.

**FIG. 1: Parts Diagram**



Item no.	Engineering part no.	Description	Quantity
1	YR-TBASMB	Tow bar assembly	1
2	YR-HL-PMP YR-HL-SK	Manual hydraulic pump Seal kit for manual hydraulic pump	1 1
3	YR-CRNK YR-HNDL	Mechanical crank assembly Handle for mechanical crank	1 1
4	YR-CYL YR-PPHP	Hydraulic leveler (YRD-series) Hydraulic cylinder for leveler Manual pump for leveler	1 1
	YRD-ML-HOOK YRD-ML-TS	Mechanical leveler (YRD-ML-series) Lifting hook Torsion spring	1 1
	TRD-BB YRD-RB	Standard features (YRD and YRD-ML series) Bumper box Rubber bumper	2 2
5	YR-PAD	Foot plate	2
6	YR-SS9	Steel wheels (9in.)	2
7	YR-HL-TIREASMB	Pneumatic tire assembly (series YR-HL)	1

YR-HL_TIRE YR-HL-AXLHUB	Pneumatic tire Axle and hub	2 1
----------------------------	--------------------------------	--------

**FIG. 2:** Label Placement Diagram

<b>⚠ WARNING</b>	<b>⚠ ADVERTENCIA</b>	<b>⚠ AVERTISSEMENT</b>
CHAIN BOTH SIDES OF RAMP TO TRAILER & CHOCK WHEELS	ENCADENE AMBOS LADOS DE LA RAMPA AL REMOLQUE O CURIAS DE LAS RUEDAS	ATTACHER LES DEUX COTES DE LA RAMPE A LA REMORQUE & AUX CALES DES ROUES
Vestil Manufacturing Corporation • Aigo st. 1M-46702 U.S.A. • P.h. 800-662-7588 • www.vestil.com		

Both Sides

427

Both Sides



623

Edge-O-Dock Option



See FM or PE/PP for labels

Hand Pump Option



Red Vestil  
003



621

Without Pump  
Option



622

With Pump  
Option



206

# YR/YRD & YRDS



Both Sides

577

Both Sides

CAPACITY / CAPACIDAD / CAPACITÉ  
**16,000 LBS. / 7257 KGS.**

or

616

CAPACITY / CAPACIDAD / CAPACITÉ  
**20,000 LBS. / 9071 KGS.**

or

614

CAPACITY / CAPACIDAD / CAPACITÉ  
**25,000 LBS. / 11339 KGS.**

or

612

CAPACITY / CAPACIDAD / CAPACITÉ  
**30,000 LBS. / 13607 KGS.**

615

# YARD RAMP

Stationary/Portable Steel

## LIMITED WARRANTY

Vestil Manufacturing Corporation (“Vestil”) warrants this product to be free of defects in material and workmanship during the warranty period. *Our warranty obligation is to provide a replacement for a defective original part if the part is covered by the warranty, after we receive a proper request from the warrantee (you) for warranty service.*

### Who may request service?

Only a warrantee may request service. *You are a warrantee if you purchased the product from Vestil or from an authorized distributor AND Vestil has been fully paid.*

### What is an “original part”?

An original part is a part used to make the product as shipped to the warrantee.

### What is a “proper request”?

A request for warranty service is proper if Vestil receives: 1) a photocopy of the Customer Invoice that displays the shipping date; AND 2) a written request for warranty service including your name and phone number. Send requests by any of the following methods:

Mail  
Vestil Manufacturing Corporation  
2999 North Wayne Street, PO Box 507  
Angola, IN 46703

Fax  
(260) 665-1339  
Phone  
(260) 665-7586

Email  
sales@vestil.com

In the written request, list the parts believed to be defective and include the address where replacements should be delivered.

### What is covered under the warranty?

After Vestil receives your request for warranty service, an authorized representative will contact you to determine whether your claim is covered by the warranty. Before providing warranty service, Vestil may require you to send the entire product, or just the defective part or parts, to its facility in Angola, IN. The warranty covers defects in the following *original* dynamic components: motors, hydraulic pumps, electronic controllers, switches and cylinders. It also covers defects in *original* parts that wear under normal usage conditions (“wearing parts”): bearings, hoses, wheels, seals, brushes, batteries, and the battery charger.

### How long is the warranty period?

The warranty period for original components is 1 year. The warranty period begins on the date when Vestil ships the product to the warrantee. If the product was purchased from an authorized distributor, the period begins when the distributor ships the product. Vestil may extend the warranty period for products shipped from authorized distributors by *up to 30 days* to account for shipping time.

### If a defective part is covered by the warranty, what will Vestil do to correct the problem?

Vestil will provide an appropriate replacement for any *covered* part. An authorized representative of Vestil will contact you to discuss your claim.

### What is not covered by the warranty?

1. Labor;
2. Freight;
3. Occurrence of any of the following, which automatically voids the warranty:
  - Product misuse;
  - Negligent operation or repair;
  - Corrosion or use in corrosive environments;
  - Inadequate or improper maintenance;
  - Damage sustained during shipping;
  - Collisions or other incidental contacts causing damage to the product;
  - Unauthorized modifications: DO NOT modify the product IN ANY WAY without first receiving written authorization from Vestil. Modification(s) might make the product unsafe to use or might cause excessive and/or abnormal wear.

### Do any other warranties apply to the product?

Vestil Manufacturing Corp. makes no other express warranties. All implied warranties are disclaimed to the extent allowed by law. Any implied warranty not disclaimed is limited in scope to the terms of this Limited Warranty.

