

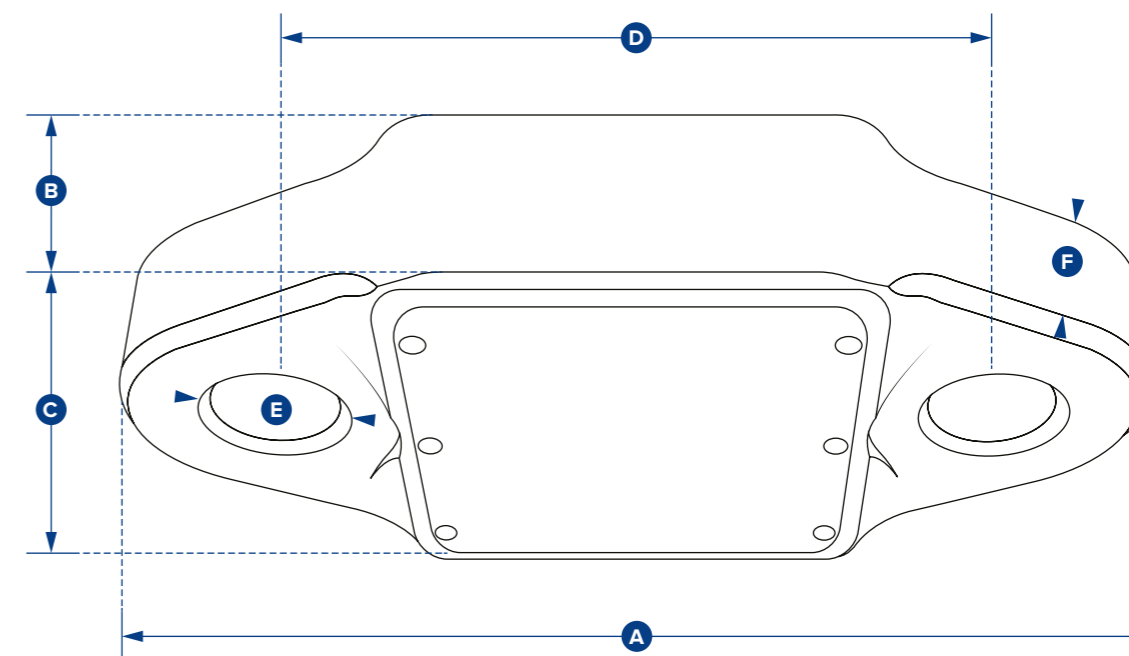
BlueLink - Bluetooth 6.5t load cell



Wireless Range
328ft or 100m

Multiple weight unit measurement options (kg,te,lb,kN)
Audible alarm alert for high/low values
Peak Hold button
Zero and Gross monitoring options
100 Hz Peak Hold
Reset Tare

HHP App connects via Bluetooth on any iOS or Android device



Designed to replace outdated mechanical products still in the field, this 14,300lb (6500kg) Dynamometer, the 'BlueLink', is the latest Crosby SP product to feature their proprietary Bluetooth wireless technology.

The Bluetooth signal effortlessly connects via Bluetooth to iOS & Android device that has our free HHP app installed, providing the operator with a wireless range of up to 328ft or 100m. This allows them to stand in a safe position from the load, with no requirement to read a load on the load cell itself. The app will also allow the operator to log data versus time, or on events such as over or underload. An adjustable alarm will alert the operator on their smartphone if any overload is occurring.

Rigged using industry standard shackles such as Crosby G2130, the BlueLink has been designed to minimise headroom (6.14" or 156mm from eye to eye). With a safety factor of over 500%, its compact lightweight design does not sacrifice on strength.

Constructed from high-quality aerospace grade aluminium, which is then hard-anodised, it features an advanced internal design structure. This design provides the product with an unrivalled strength to weight ratio. The use of a separate internal sealed enclosure administers the load cell's electronic components with IP67 or NEMA6 environmental protection, even with the battery cover plate missing. All these features makes it an industry-leading compact dynamometer, even more suitable for use in the harshest industrial or leisure environments.

The BlueLink is powered by four standard AA alkaline batteries that provide in excess of 500 hours transmission time. Its internal antennae ensures safe transmissions of loads to an accuracy of ±0.2% FS.

FEATURES & BENEFITS

- Bluetooth wireless connection to any iOS or Android device with SP HHP App
- Wireless Range of 328ft/100m
- Battery Life of 500hrs
- Environmentally Sealed to IP67/ NEMA6
- Internal Antennae
- Remote On-Off from the HHP App
- 100 Hz Peak Hold
- Push button Tare
- Fatigue Rated

APPLICATIONS

- Small to medium crane lifts
- Millwrighting - machinists - mechanics
- Linesman - utilities
- Freight and cargo weighing
- Aircraft and marine vessel manufacturing/building
- Cable/rope tensioning
- Precision field testing of chain, rope, and wire.
- Multiple applications within construction, transportation and logistics, and material handling

Part Number	BLD6T5
Crosby Part	2789218
Capacity	6.5 te 14,300 lb
Resolution	0.001 te 2 lb
Weight	1.5 kg 3.3 lb
Safety Factor	6:1
Battery Type	4 x AA alkaline
Battery Life	500 hrs
Operating Temp	-10 to +50° C / 14 to 122° F
Accuracy	+/- 0.2% of full scale
Range (Max)	100 m / 328 ft
Data Rate	3Hz
Protection	IP67 / NEMA6
Dimension A	224 8.82
Dimension B	44 1.73
Dimension C	113 4.45
Dimension D	156 6.14
Dimension ØE	27.5 1.08
Dimension F	33 1.3
Crosby Shackle	G2130
Loading Pin Ø	25 1 in