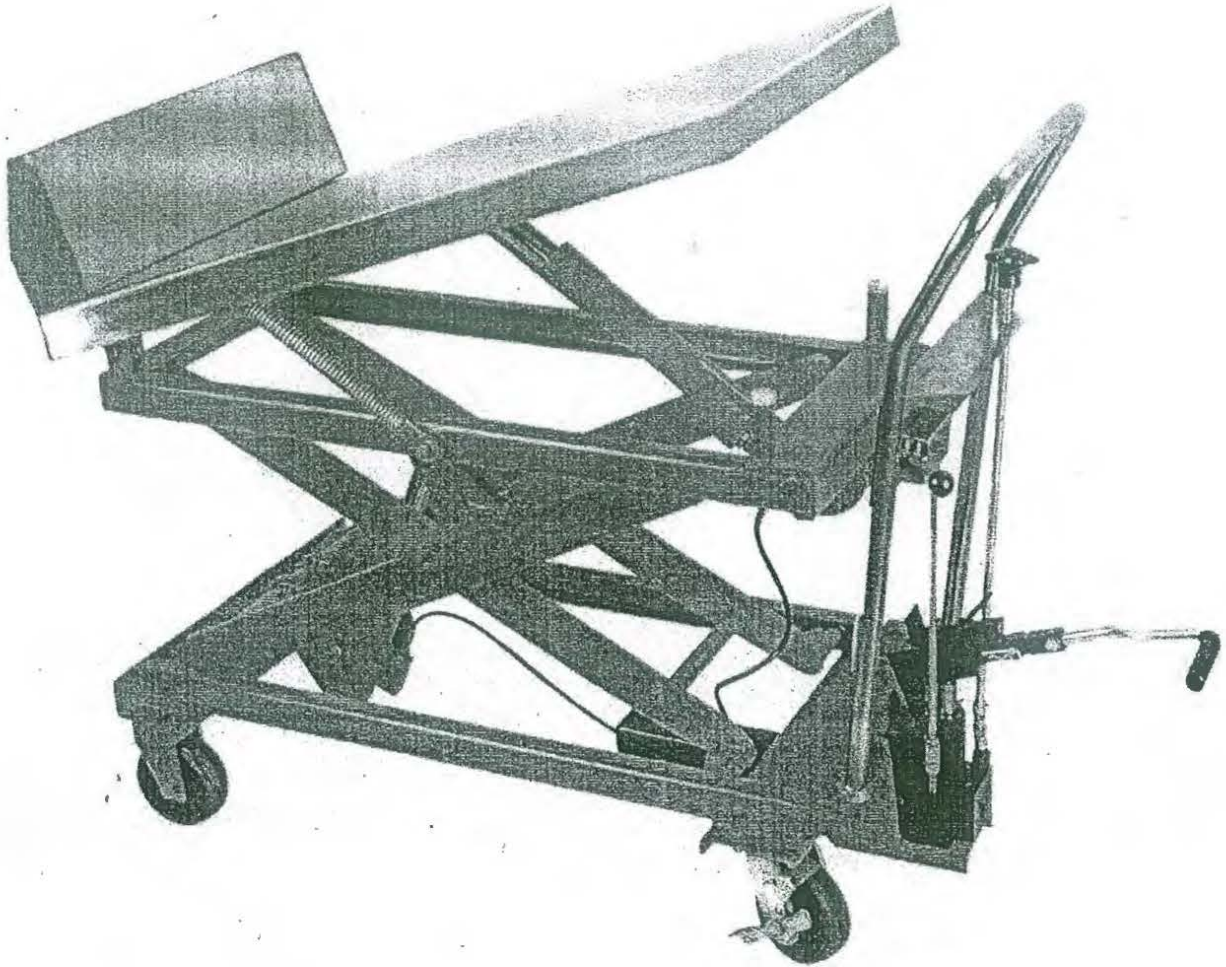


INSTRUCTION MANUAL
HAND-HYDRAULIC LIFT & TILT TABLE TRUCK



Model: CART-600-LT
CART-1000-LT

Safety instructions

IMPORTANT

The instructions and safety instructions in this operating manual must be followed to the letter. Failure to follow them or incorrect operation or abuse may result in danger.

- for the operator or third parties
- for the unit and other property of the operator

The units may only be operated and serviced by persons

- who are trained to do so
- who have read and understood this operating manual
- who are acquainted with the safety regulations governing their work station
- who have a suitable work station and tools

Note: The serial number and the production date are shown on the model plate of each unit and also recorded at the factory. Please make a note of this information in a separate file.

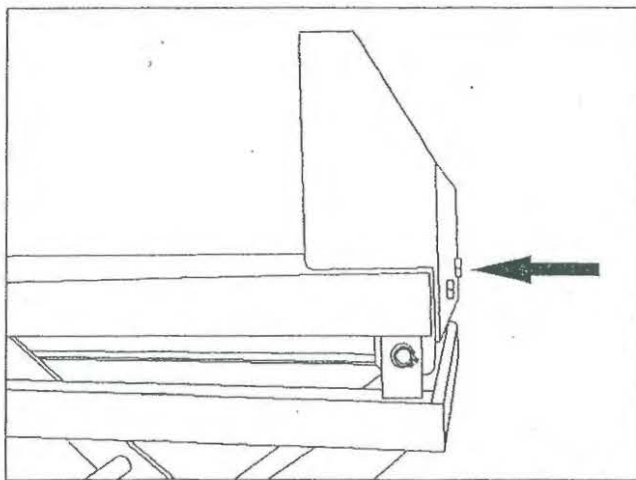
I. Instructions before commissioning

The TF lifting platform car has been developed and designed for safe operation. If you observe the following safety instructions, it is possible to prevent exposing the operator, third parties and property to any danger.

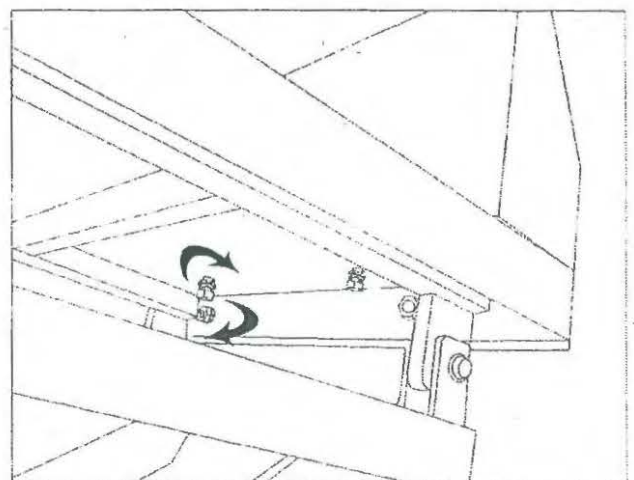
A. IMPORTANT

1. PEOPLE OTHER THAN THE OPERATOR MUST KEEP A SAFE DISTANCE FROM THE UNIT WHILST IT IS OPERATING.
2. NEVER STAND ON THE PLATFORM.
3. NEVER EXCEED THE MAXIMUM LOAD LIMIT.
4. NEVER LOAD THE PLATFORM ON ONE SIDE OR MAKE IT TOP-HEAVY OR PLACE LOADS THAT STICK OUT OVER THE EDGE OF THE PLATFORM.
5. NEVER INSERT YOUR HAND OR FOOT BETWEEN THE PLATFORM AND THE BASE FRAME.
6. LOWER THE LOADED PLATFORM SLOWLY.
7. THE PLATFORM MUST BE LOWERED IN FULL FOR TRANSPORT.
8. BEFORE LOADING AND UNLOADING ALWAYS APPLY THE PARKING BRAKE.
9. ONLY RAISE AND LOWER THE PLATFORM WHEN THE UNIT IS HORIZONTAL.
10. DO NOT USE THE UNIT IS ITS LOWERING SPEED BECOMES IRREGULAR OR EXCESSIVE.
11. THE UNIT MAY ONLY BE INSTALLED ON A FLAT SURFACE AND AFTER BLOCKING THE ROLLERS SO AS TO PREVENT THE UNIT ROLLING AWAY SUDDENLY.

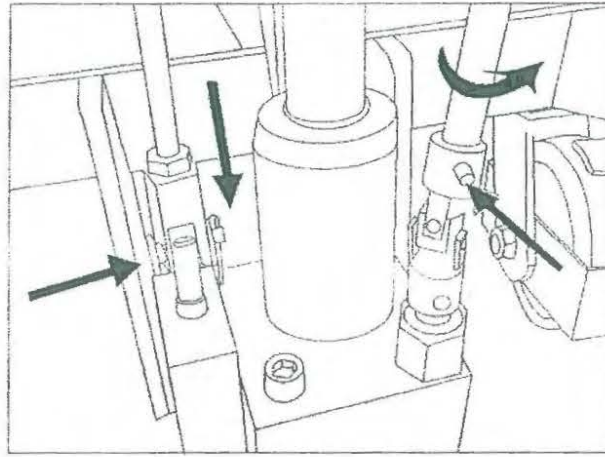
II. Installation



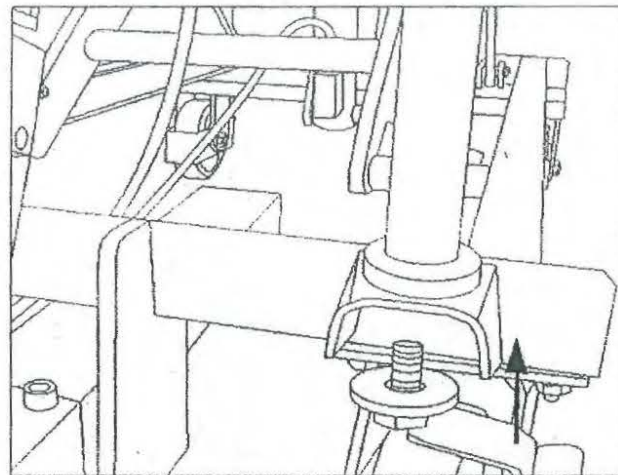
01



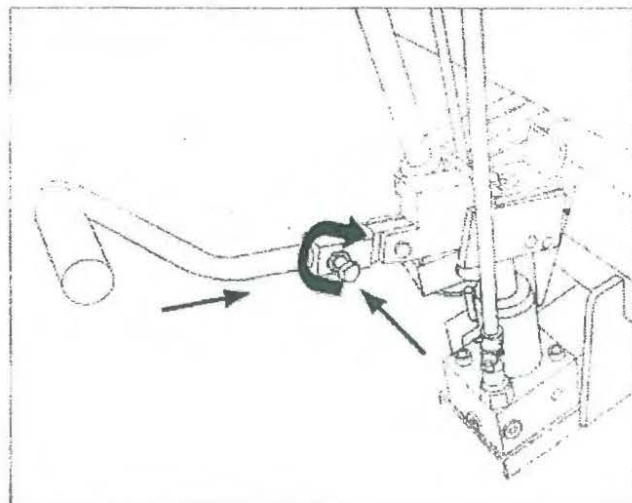
02



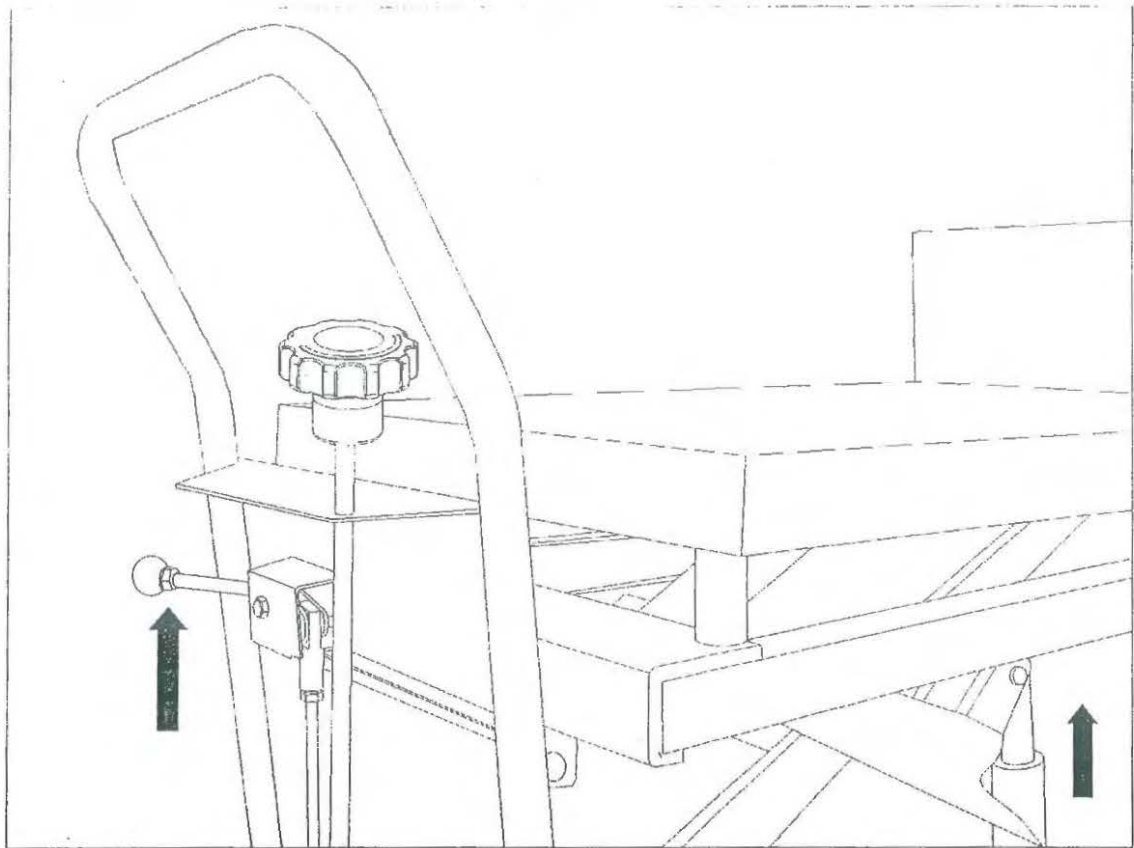
03



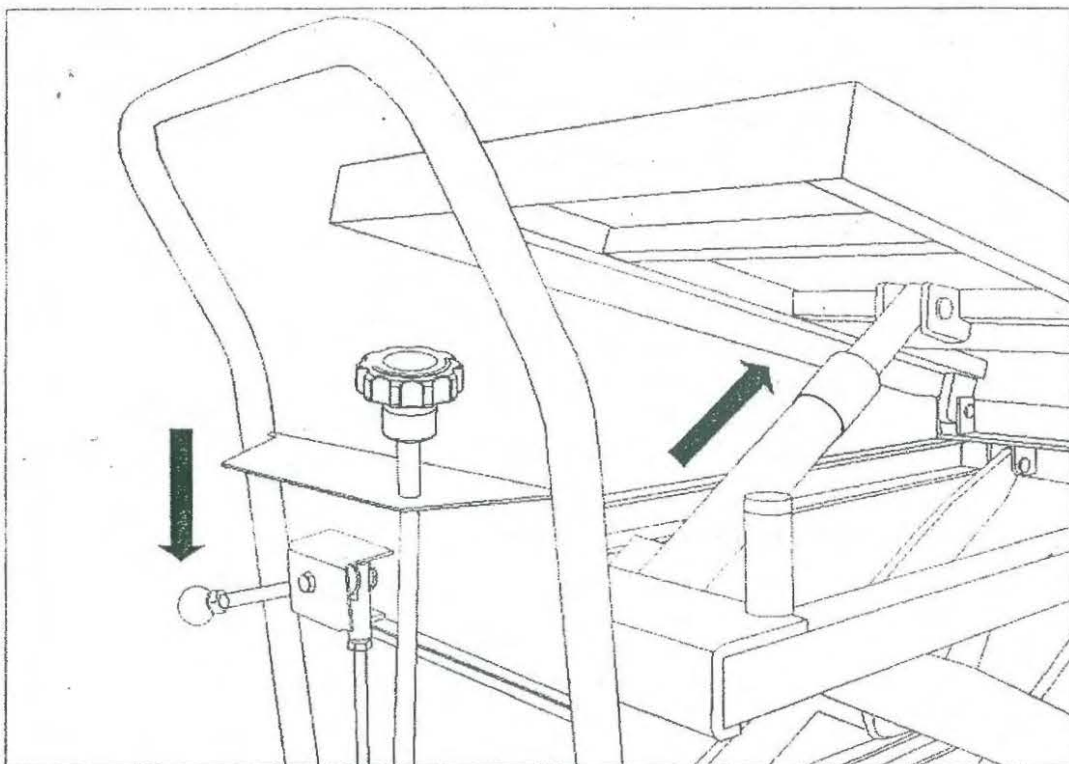
04



05



06



07

III. Commissioning

- 1) Close the hydraulic valve by turning the plastic handle clockwise as far as it will go.
- 2) The platform can now be raised by pressing the pedal.
- 3) By slowly turning the plastic handle anti-clockwise the hydraulic valve will open and the platform will be lowered.
Important: The more you open the valve, the faster the platform will be lowered.
If you close the valve again the platform will stop in the position it has reached.
- 4) Always apply the parking brake before loading the platform.

IV. Troubleshooting

1) The platform will not raise

No oil in the tank ⇒ Top up with oil.

Lowering valve or ball's function is destroyed ⇒ Clean or replace.

2) Platform will not stay raised

Lowering valve or ball's function is destroyed ⇒ Clean or replace.

3) Platform cannot be lowered

U ring is worn ⇒ Replace the U ring.

Lowering valve not open ⇒ Check or repair valve stopper or replace it if necessary

4) Oil leaks from the lowering valve

O ring is worn ⇒ Replace the O ring.

5) Oil leaks from the cylinder pump

The oil seal or U ring is worn ⇒ Replace the seal and/or U ring.

V. Servicing

The TF lifting platform cars do not require any special servicing and in fact only have to be lubricated/greased at regular intervals and inspected from time to time.

To ensure the perfect handling and function of the unit, the following work should be completed.

Important: The platform must not be laden during the servicing, inspection and lubrication work. Support blocks must be placed between the platform guides and the frame to secure the platform support blocks.

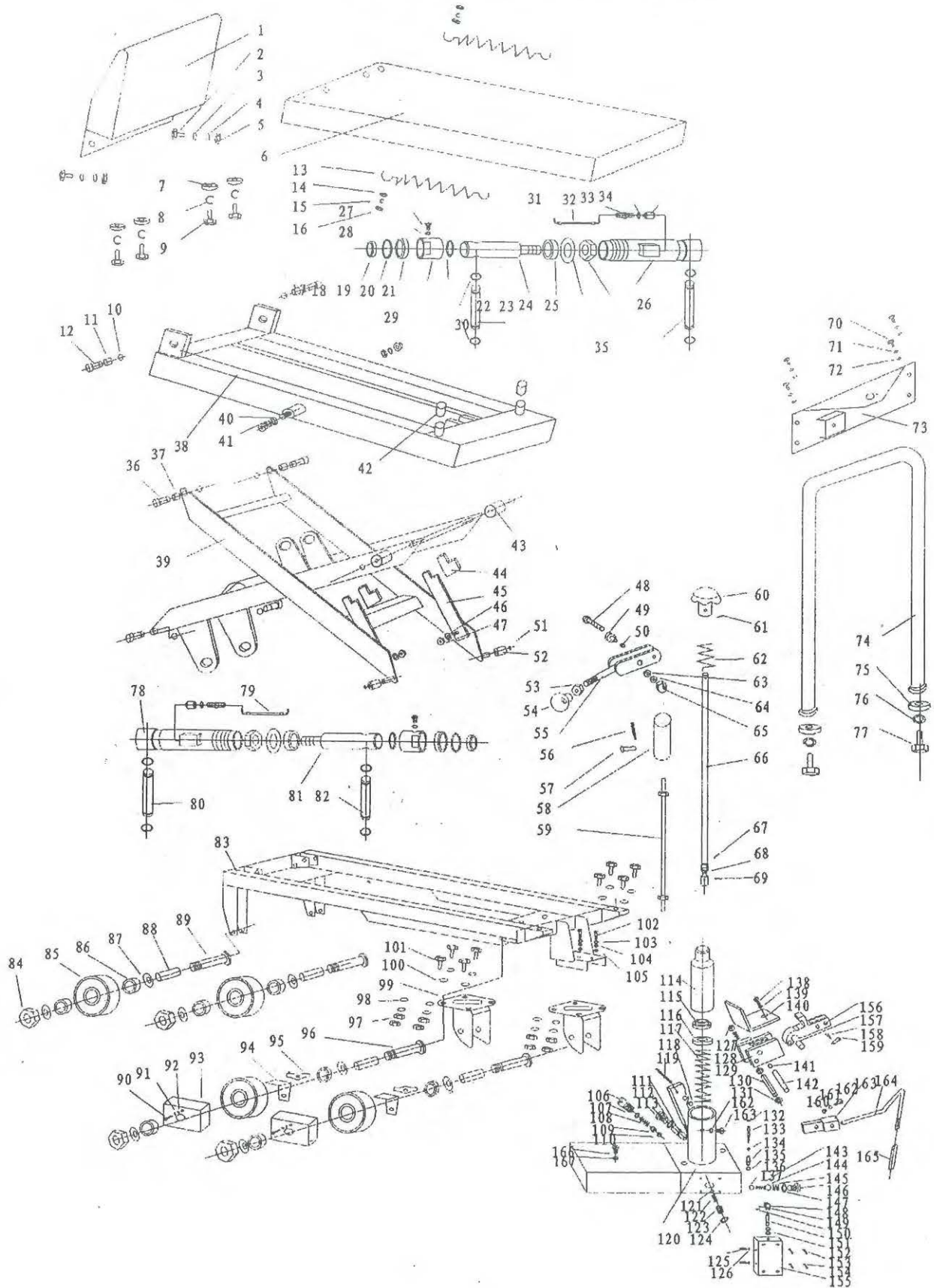
1. Every friction point should be greased every month.
2. Check the wheels on a regular basis to ensure that they move easily and show no signs of wear.
3. Check the brake on a regular basis.
4. Check the hydraulic cylinder for oil loss on a regular basis.

VI. Specification

Model	CART-600-LT	CART-1000-LT
Load capacity	300kg	500kg
Max. lifting range mm	445 - 800	445 - 800
Platform LxWmm	950x560	950x560
Wheel diameter	125 mm	125 mm
Tyres	Nylon/PU	Nylon/PU
Wheel brake	Standard	Standard
Colour	RAL 9007	RAL 9007
Net weight	146 kg	150 kg
Overall Dimensions	1160x560x450mm	1160x560x450mm

HAND-HYDRAULIC LIFT & TILT TABLE TRUCK

CART-600-LT/CART-1000-LT



HAND-HYDRAULIC LIFT & TILT TABLE TRUCK CART-600-LT/CART-1000-LT

No.	Description	Q'ty	No.	Description	Q'ty	No.	Description	Q'ty
1	Block Shield	1	57	Shaft	1	113	Hex Cap Plug	1
2	Hex Cap Bolt	2	58	Join Rod	1	114	Pump Piston	1
3	Spring Washer	2	59	Change Position Rod	1	115	Dust Cover	1
4	Spring Washer	2	60	Hex Cap Hand Wheel	1	116	Oil Seal	1
5	Hex Cap Nut	2	61	Set Screw	2	117	Spring	1
6	Platform	1	62	Turn Spring	1	118	Bushing	1
7	Flat Washer	4	63	Flat Washer	1	119	Spring Pin	1
8	Spring Washer	4	64	Spring Washer	1	120	Valve	1
9	Hex Cap Bolt	4	65	Hex Cap Nut	1	121	Steel Ball	1
10	C-ring	2	66	Brake Rod	1	122	Spring	1
11	Bushing	2	67	Set Screw	1	123	Screw	1
12	Shaft	2	68	Gimbal	1	124	O-ring	1
13	Spring	2	69	Set Screw	1	125	Oil Pipe Tie-in	2
14	Big Washer	4	70	Semicircle Screw	4	126	O-ring	1
15	Spring Washer	4	71	Spring Washer	4	127	Steel Ball	1
16	Hex Cap Nut	4	72	Flat Washer	4	128	Spring	1
17	Dust Cover	2	73	Protect-shield	1	129	Joint Block	1
18	O-ring	2	74	Handle	1	130	Shaft	1
19	Oil Seal	2	75	Big Washer	2	131	Bushing	2
20	Top Nut	2	76	Spring Washer	2	132	O-ring	1
21	O-ring	2	77	Hex Cap Bolt	2	133	Set Screw	1
22	Lift Piston	1	78	Cylinder	1	134	Steel Ball	1
23	Block	2	79	Oil Pipe	1	135	Valve Cover	1
24	Spring Washer	2	80	Shaft	1	136	Compose Washer	1
25	Hex Cap Nut	2	81	Lift Piston	1	137	Steel Ball	1
26	Cylinder	1	82	Shaft	1	138	Screw	1
27	O-ring	2	83	Frame Seat	1	139	Washer	1
28	Hex Cap Plug	2	84	Hex Cap Nut	4	140	Draw Board	1
29	C-ring	8	85	Big Wheel	4	141	Bushing	1
30	Shaft	1	86	Bearing	8	142	Shaft	1
31	High Press Oil Pipe	1	87	Bushing	8	143	Spring	1
32	Oil Pipe Tie-in	2	88	Bearing Cover	4	144	Steel Ball	1
33	O-ring	2	89	Hex Cap Bolt	2	145	Spring	1
34	Safe Valve	2	90	Semicircle Screw	2	146	Hex Cap Plug	1
35	Shaft	1	91	Spring Washer	2	147	O-ring	1
36	Shaft	2	92	Flat Washer	2	148	Gimbal	1
37	Bushing	4	93	Protect Cover	2	149	Lock Pin	1
38	Platform Holder	1	94	Brake Slice	2	150	Shaft	1
39	Link Assembly	1	95	Brake Foot Pedal	2	151	Assemble Valve Rod	1
40	C-ring	4	96	Hex Cap Bolt	2	152	O-ring	2
41	Shaft	2	97	Hex Cap Nut	8	153	Hex Cap Bolt	4
42	Rubber Washer	2	98	Spring Washer	8	154	Spring Washer	4
43	Up Roller Guide	2	99	Swivel Wheel Holder	2	155	Assemble Valve	1
44	Rubber Washer	2	100	Flat Washer	8	156	Press Holder	1
45	Support Rod	2	101	Hex Cap Bolt	8	157	Press Wheel	1
46	Washer	2	102	Hex Cap Bolt	2	158	Shaft	1
47	Hex Cap Nut	2	103	Flat Washer	2	159	Shaft	1
48	Hex Cap Bolt	1	104	Spring Washer	2	160	Shaft	1
49	Discharge Rod Cover	1	105	Hex Cap Nut	2	161	Spring Washer	1
50	Bushing	1	106	Adjust Press Screw	1	162	Hex Cap Bolt	1
51	C-ring	4	107	O-ring	1	163	Foot Pehal holder	1
52	Down Roller Guide	2	108	Adjust Press Spring	1	164	Foot Pedal Rod	1
53	Hex Cap Nut	1	109	Spring Seat	1	165	Rubber Cover	1
54	Bakelite Ball	1	110	Steel Ball	1			
55	Discharge Handle	1	111	Lowering Valve Assembly	1			
56	Lock Pin	1	112	O-ring	1			