

# LOW PROFILE "E" TYPE ELECTRIC LIFT TABLE, EHE-2

\*\*SPECIAL UNITS ARE NON-RETURNABLE  
 \*AVAILABLE AT ADDITIONAL COSTS

Deck tolerances +/- 1/2"  
 Table height tolerances +/- 1/2"

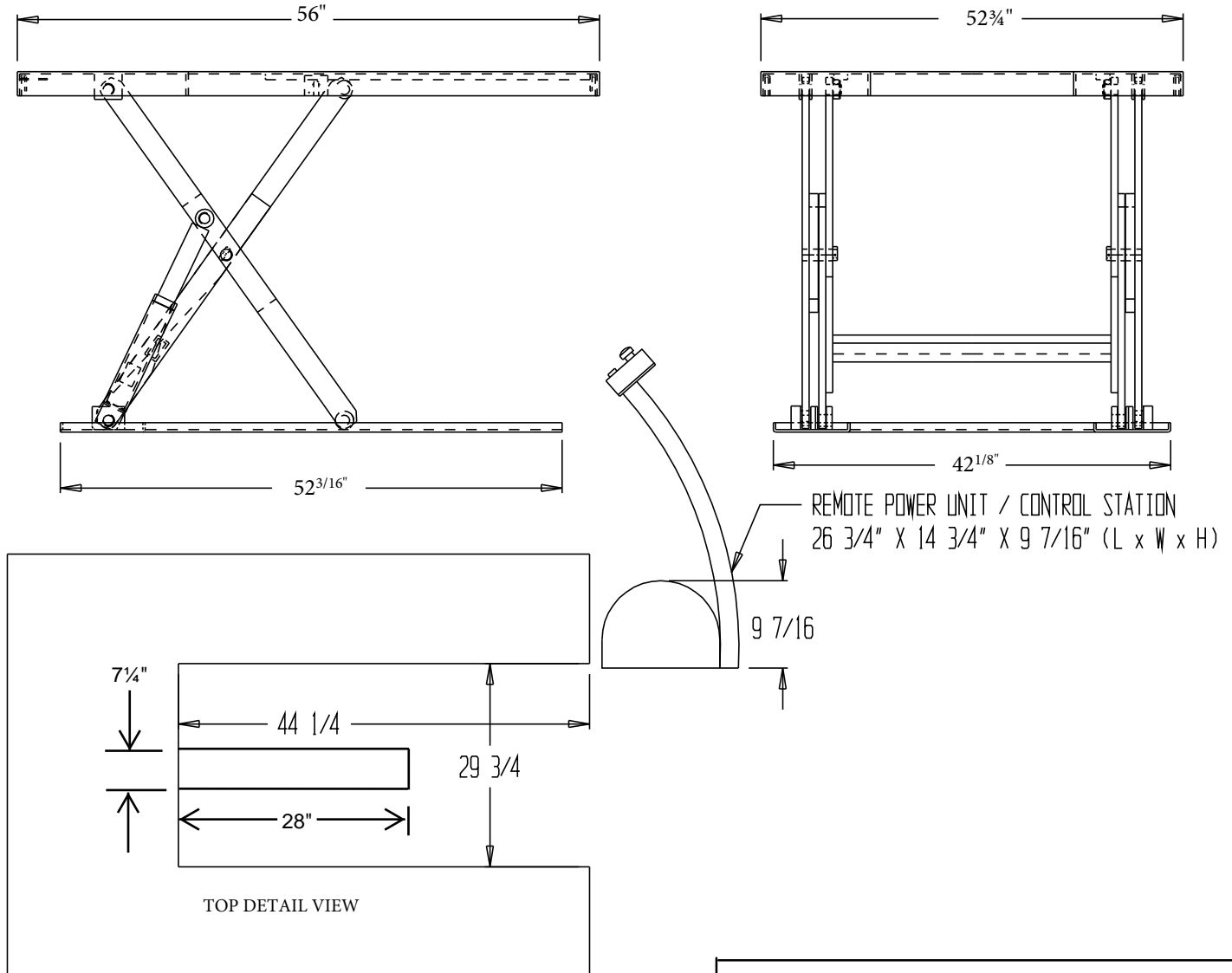
PRODUCTION WILL START UPON  
 RECEIPT OF SIGNED APPROVAL  
 DRAWING

## STANDARD FEATURES

MODEL NUMBER: EHE-2  
 CAPACITY: 2,000 LBS  
 PLATFORM WIDTH: 52 3/4"  
 PLATFORM LENGTH: 56"  
 PLATFORM RAISED HEIGHT: 33 7/8"  
 PLATFORM LOWERED HEIGHT: 3 3/8"  
 STANDARD REMOTE POWER UNIT / CONTROL STATION  
 115V AC SINGLE PHASE (ONLY)  
 INCLUDES SAFETY MAINTENANCE PROPS  
 WHEN PROPS ARE ENGAGED, OVERALL HEIGHT: 28"

## SPECIAL FEATURES

NONE



<b>VESTIL MANUFACTURING CORP.</b>	
Model:	EHE-2
Description:	Low Profile E Shape Electric Lift Table
Design:	T.M.
Date:	03/30/2020