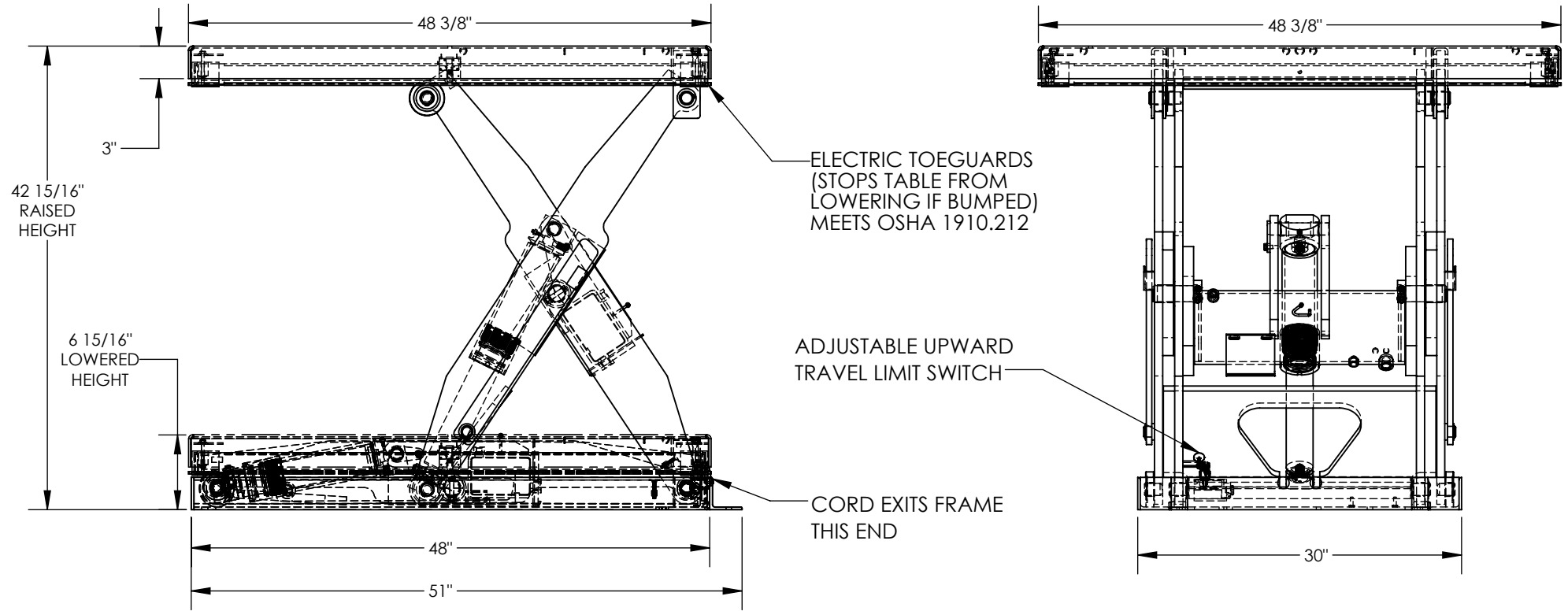


# ELECTRIC HYDRAULIC SCISSOR LIFT TABLE - EHLT-4848-2-43

APPROX WEIGHT: 671.14 lbs.  
DOES NOT INCLUDE WEIGHT OF POWER OR PACKAGING!!!

\*\*\* ANY ADDITIONS, DELETIONS, OR OMISSIONS MUST BE CORRECTED ON THIS DRAWING AS THIS DRAWING WILL BE CONSIDERED ALL INCLUSIVE \*\*\*

ALL GRAPHICS PROVIDED ARE FOR REFERENCE ONLY. IF CERTAIN DIMENSIONS ARE CRITICAL PLEASE VERIFY THOSE DIMENSIONS WITH YOUR SALESPERSON



DIMENSION TOLERANCE ± 1/4"

## STANDARD FEATURES

MODEL NUMBER IS EHLT-4848-2-43  
 PLATFORM WIDTH IS 48 3/8"  
 PLATFORM LENGTH IS 48 3/8"  
 PLATFORM RAISED HEIGHT IS 43"  
 PLATFORM LOWERED HEIGHT IS 7"  
 TABLE CAPACITY (EVENLY DISTRIBUTED)  
 LOAD IS 2,000 LBS  
 INTERNAL POWER UNIT  
 CONTROL IS HANDHELD, 2 BUTTON, NEMA 4  
 PENDANT WITH MINIMUM 8' USABLE COIL CORD  
 SAFETY MAINTENANCE PROPS, DISPLACEMENT  
 STYLE CYLINDERS INSTALLED ROD DOWN  
 EMERGENCY SAFETY STOP HYDRAULIC FUSES  
 IN ALL CYLINDERS  
 UNITS HAVE 2' TEST LEAD AND PIG TAIL  
 DURABLE LIQUID PAINT BLUE FINISH

## PLEASE CIRCLE SPECIFICATIONS:

POWER	AC	<del>DC (12V)</del>	<del>AIR/OIL</del>
MOTOR VOLTAGE	<u>115</u>	<del>208</del>	<del>230</del> 460
DEDICATED CIRCUIT REQUIRED 60Hz			
MOTOR PHASE	<del>SINGLE</del>	THREE	
CONTROL	HAND	<del>FOOT</del>	

DECK TOLERANCE ± 1/2"  
 TABLE HEIGHT TOLERANCE ± 1/2"  
 DECK FLATNESS ± 1/4"

## SPECIAL FEATURES

NONE

**APPROVAL**

I, THE UNDERSIGNED, AGREE THAT THE PRODUCT AS REPRESENTED SATISFIES DESIGN AND DIMENSION REQUIREMENTS. I ALSO ACKNOWLEDGE MY DUTY TO CONFIRM PRODUCT AND INSTALLATION COMPLIANCE WITH ALL APPLICABLE FEDERAL, STATE AND LOCAL REGULATIONS AND STANDARDS.

**UNITS REQUIRING APPROVAL DRAWINGS OR MODIFIED ARE NON-RETURNABLE**

[ ] As drawn [ ] As marked

Signed: \_\_\_\_\_ Date: \_\_\_\_\_

Printed Name: \_\_\_\_\_

LEAD TIME WILL START UPON RECEIPT OF SIGNED APPROVAL DRAWING

DISTRIBUTOR'S NAME:		P.O.#
VESTIL MANUFACTURING		X
DRAWN BY: BCN	DATE: 8/28/2017	W.O.#
REFERENCE: X	SCALE: 1:14	X
QUOTED LEAD TIME: X	QUOTE #	SALES: X
	X	FILE NAME:
		24-007-041-002