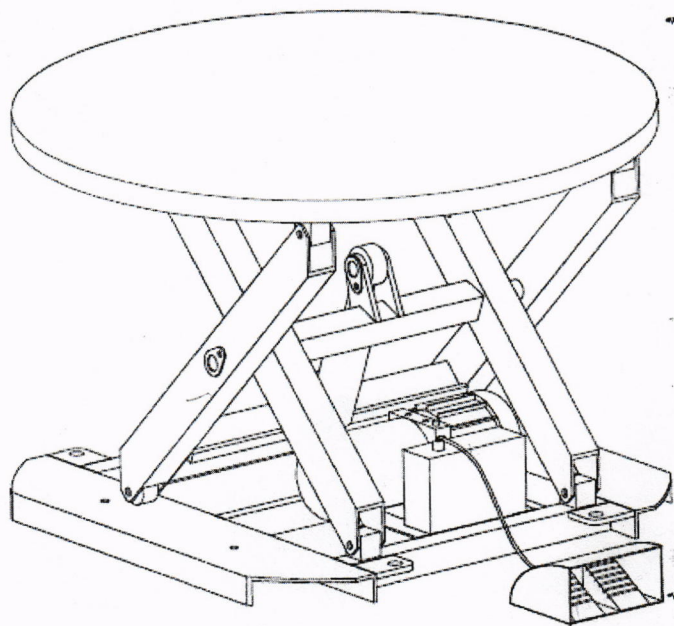


HST-40-ST

# Operation Manual

## Electric Circular Rotating Lift Table



**SPP360-1000E/SPP360-2000E**

**Note: Please do read carefully and understand completely this manual before the owner/operator uses the lift table.**

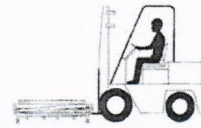
RevA:02/2016

# CONTENTS

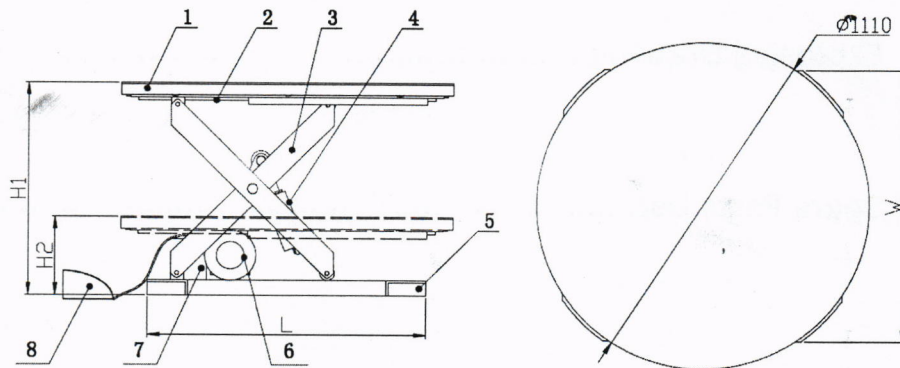
1. Brief Introduction.....	3
2. Structure and Parameter Chart.....	3
3. Attention and Warning.....	4
4. Operation Instruction.....	4
5. Electric Principle Diagram.....	5
6. Hydraulic Principle Diagram.....	6
7. Explosive Drawing.....	6
8. Spare Parts List.....	7

## Brief Introduction

- The lift table has the function of electric lifting and lowering.
- The round platform could turn 360 degree either clockwise or counterclockwise.
- With pedal safety lifting switch, the operation is more efficient and convenient.
- It could be moved by the forklift truck.
- It is mainly used for stacking or removing goods from the pallets.



## 2. Structure and Parameter Chart



- 1.Circular rotating platform
- 2.Platform supporting frame
- 3.Scissors
- 4.Oil cylinder
- 5.Chasis
- 6.Electric pump
- 7.Control box
- 8.Pedal switch

- 2.Platform supporting frame
- 4.Oil cylinder
- 6.Electric pump
- 8.Pedal switch

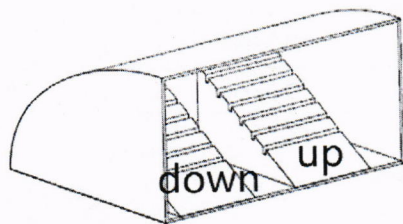


Model		SPP360-1000E	SPP360-2000E
Capacity	(Kg)	1000	2000
Operation		Electric (Pedal)	Electric (Pedal)
Length	L(mm)	930	930
Width	W(mm)	920	920
Max. Height	H1(mm)	710	710
Min. Height	H2(mm)	300	300
Platform Diameter	D(mm)	1110	1110

### 3. Attention and Warning

- Use the lift table on flat and solid ground.
- Do not overload the lift table.
- Be sure the load is centered on the unit. If the load is off center, it may shift when the rotating ring is turned. You may be hurt or the unit or load may be damaged.
- Do not move the lift table when it is loaded. This will damage the base frame of the unit.
- It is necessary to check all parts work properly before adding load.

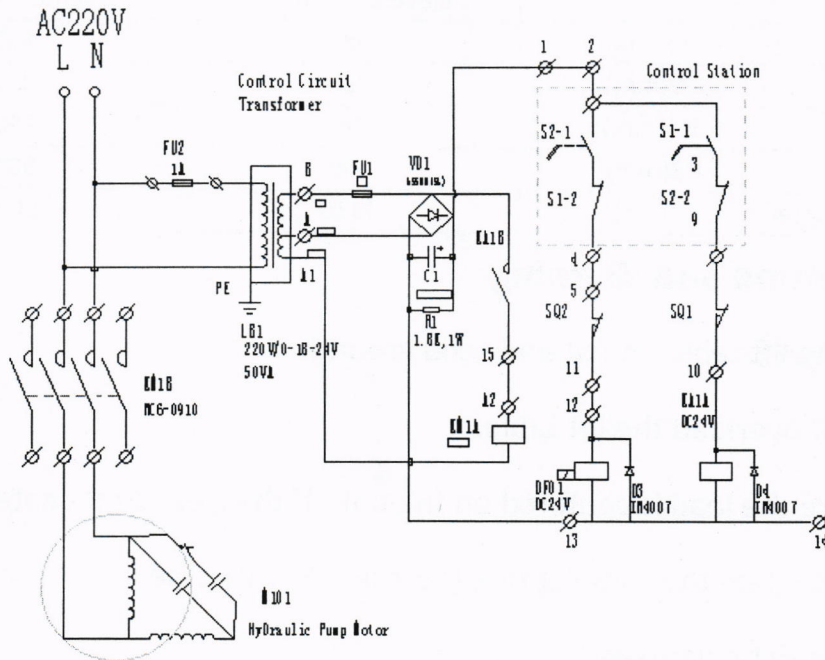
### 4. Operation Instruction



- Ensure all parts complete and in good condition then connect the power with correct voltage.

- Step the UP switch, the table will lift up.
- Step the DOWN switch, the table will lower down.
- Loose the switch, the table will stop

## 5. Electric Principle Diagram

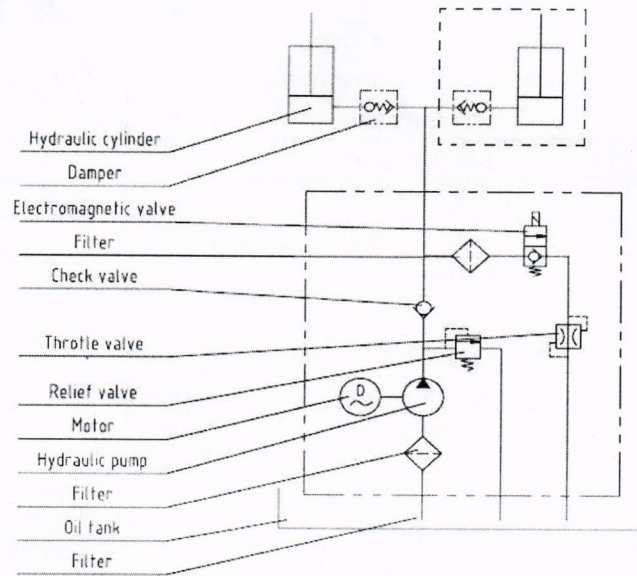


Electric Control Parts list

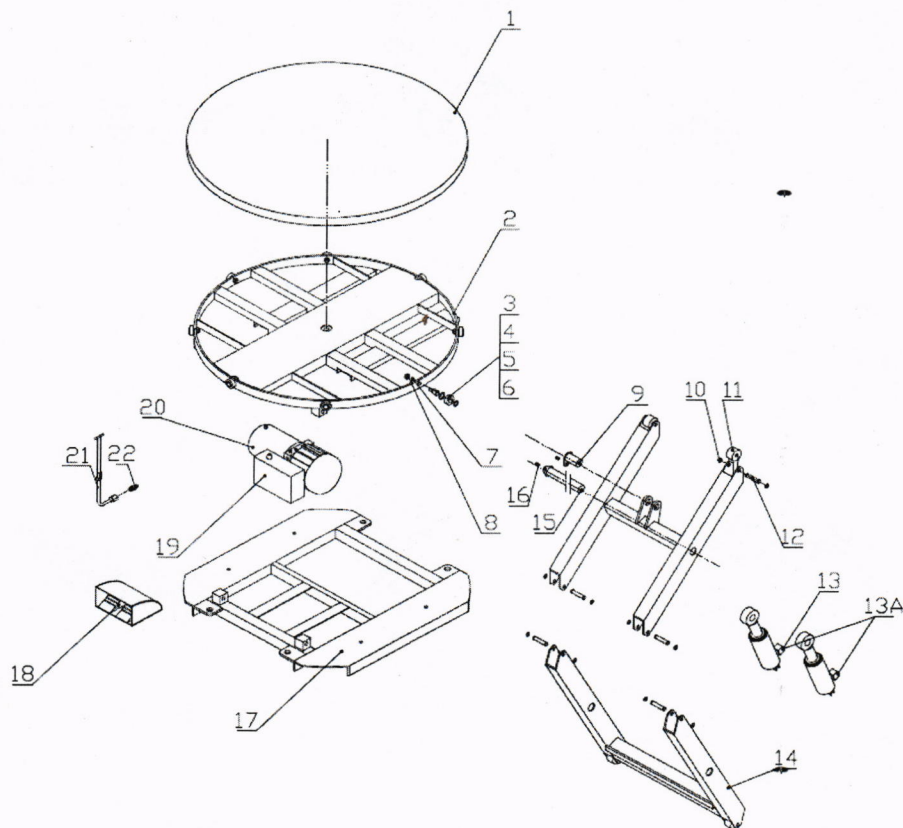
No.	Type	Name	Description	Qty	Remarks
1	LB01	Control Circuit Transformer	JBK3-220V0-18-24~50VA	1	
2	FU1	Fuse, second side	3A	1	
3	Fu2	Fuse, main side	1A	1	
4	VD1	Rectifier bridge	RS-508,5A	1	
5	C1	Electrolysis Capacitor	470uF,50V	1	
6	R1	Resistor	1.8K,1W	1	
7	KM01	AC contactor	NC6-0910	1	
8	KA1	Relay	JQC-3FF	2	
9	D3.D4	Silicon Commute Diode	IN4007	2	
10	DF01	Hydraulic Pack pump Release Valve	DC24V	1	
11	S1	Up, Pedal switch		1	
12	S2	Down, Pedal switch		1	
13	SQ1	UP Limit Switch	D4V-8108Z	1	
14	SQ2	Down limit Switch	D4V-8108Z	1	
15	M101	Hydraulic Pack Motor	220V~50Hz	1	

If need, Protection switch and Sensors are optional.

## 6. Hydraulic Principle Diagram



## 7. Explosive Drawing





## 8. Spare parts List

No.	Description	Qty	Remark
1	Circular rotating platform	1	
2	Platform supporting frame	1	
3	Retainer ring	8	
4	Bearing Roller	8	
5	Flat washer	8	
6	Roller shaft	8	
7	Spring washer	8	
8	Nut	8	
9	Short connection shaft	1	
10	Retainer ring	16	
11	Roller	4	
12	Roller shaft	8	
13	Oil cylinder	1	SSP360-1000E
13A		2	SSP360-2000E
14	Scissor	1	
15	Long connection shaft	1	
16	Inner hexagon bolt	2	
17	Chasis	1	
18	Pedal switch	1	
19	Control box	1	
20	Electric pump	1	
21	Spring washer	8	
	Oil pipe	1	
22	Oil pipe connection	1	