

HT-02-1616A INSTRUCTION MANUAL

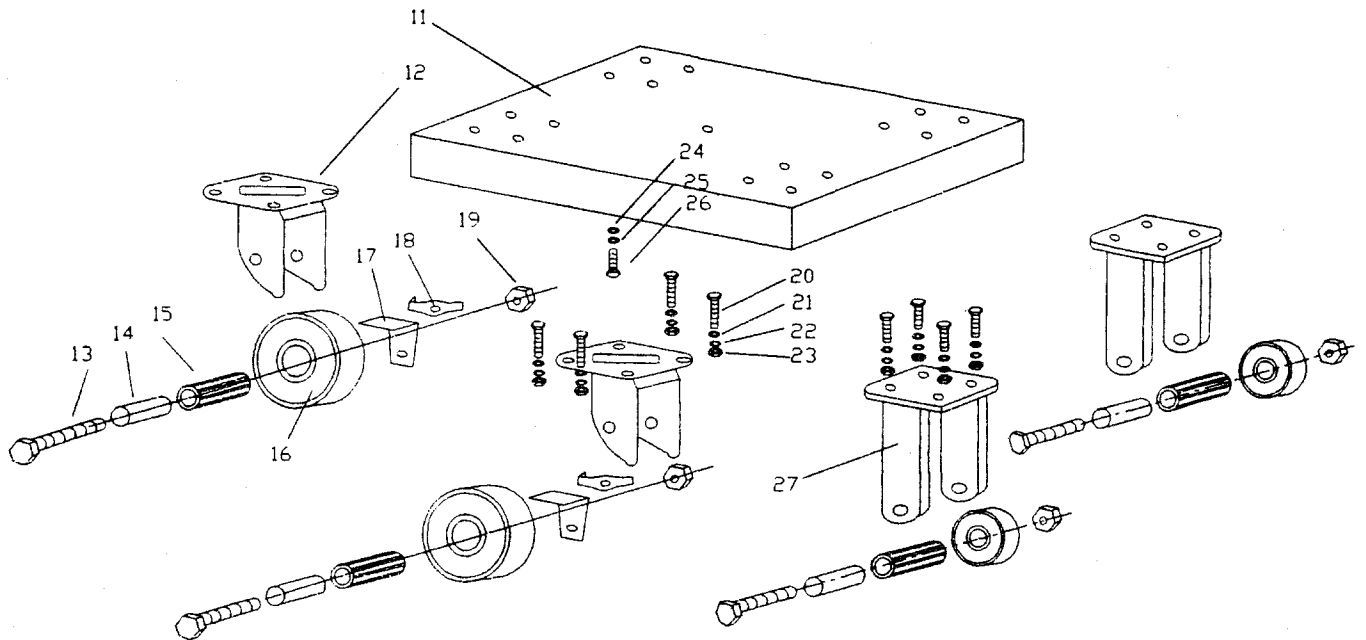
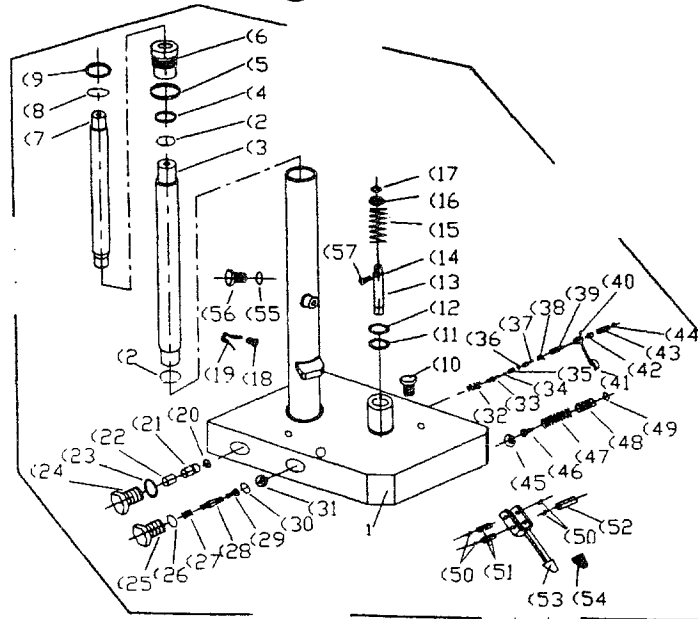
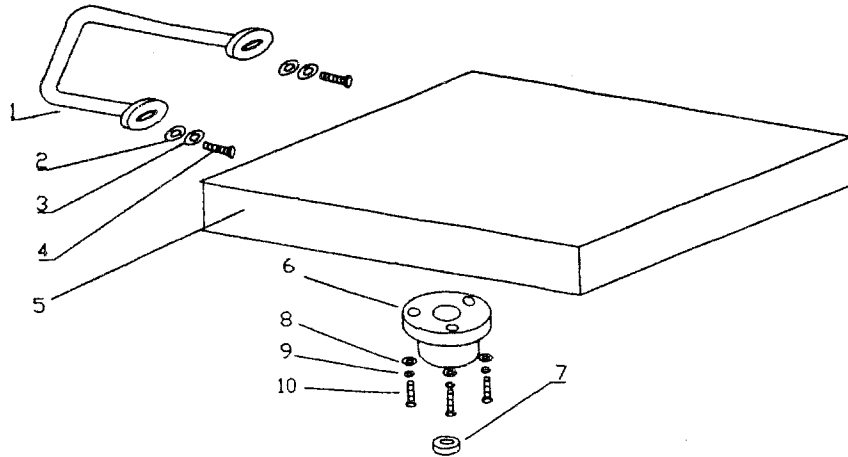
BASIC DATA:

MODEL	CAPACITY	LOWERED HEIGHT	RAISED HEIGHT	TABLE DIMENSIONS	NET WEIGHT
HT-02-1616A	200LBS.	31"	49"	16" X 16"	62 LBS.

ASSEMBLY INSTRUCTIONS:

1. Put the frame with casters on the ground.
2. Install hydraulic cylinder on the frame, and secure it with big washer (#24), spring washer (#25) and M12 bolt (#26).
3. Remove solid plug on top end of the cylinder and replace it with bleeder (vent) plug to allow air to be bled from the hydraulic system.
4. Join the Cylinder joint block (#6) to the lift piston (#7), and secure them by nut (#7).
5. Use spanner to tighten nut (#7) under the table.
6. Install push/pull handle (#1) on front side of the table (#5), and secure it by M8 bolt (#4), spring washer (#3) and flat washer (#2).
- 7. Now tighten all bolts & nuts.**
8. Check all the parts, and then test this lift table with weight and without weight.

HT-02 Post Hydraulic Table



HT-02 Post Hydraulic Table

No.	Description	Q'ty	No.	Description	Q'ty	No.	Description	Q'ty
1	Handle	1	(1)	Valve	1	(30)	O-ring ϕ 10×1.9	1
2	Flat Washer	2	(2)	O-ring 32.5×1.8	2	(31)	Steel Ball ϕ 7	1
3	Spring Washer	2	(3)	Inter Cylinder	1	(32)	Spring	1
4	Hex Cap Bolt M8×20	2	(4)	Dust Cover DH28	1	(33)	Push Rod	1
5	Table	1	(5)	O-ring 56×3.5	1	(34)	O-ring ϕ 15×2.4	1
6	Cylinder Joint Bolck	1	(6)	Cylinder Cover	1	(35)	Push Rod Cover	1
7	Round Nut	1	(7)	Lift Piston	1	(36)	Guide Cover	1
8	Flat Washer ϕ 8	3	(8)	O-ring 34×3.5	1	(37)	Pin	1
9	Spring Washer ϕ 8	3	(9)	Dust Cover DH28	1	(38)	Spring	1
10	Hex Cap Bolt M8×20	3	(10)	Hex Cap Bolt	1	(39)	Link Rod	1
11	Frame	1	(11)	Oil Seal UHS31.5	1	(40)	M6 Bolt	1
12	Swivel Wheel Holder	2	(12)	Dust Cover DH31.5	1	(41)	Slice	1
13	Hex Cap Bolt	4	(13)	Pump Piston	1	(42)	Bushing	1
14	Bushing	4	(14)	O-ring 28×3.1	1	(43)	Bolt	1
15	Bearing	4	(15)	Spring	1	(44)	Nut	1
16	Wheel	4	(16)	Spring Seat	1	(45)	Steel Ball ϕ 7	1
17	Brake Slice	2	(17)	C-ring ϕ 15	1	(46)	Spring Seat	1
18	Brake Foot Pedal	2	(18)	Screw M6	1	(47)	Spring	1
19	Set Nut	4	(19)	Slice	1	(48)	Set Screw	1
20	Hex Cap Bolt	16	(20)	O-ring 9×1.8	1	(49)	O-ring 10×1.9	1
21	Flat Washer	16	(21)	Lowering Valve	1	(50)	C-ring	4
22	Spring Washer	16	(22)	Washer ϕ 12×8	1	(51)	Shaft	2
23	Hex Cap Nut	16	(23)	Washer ϕ 14	1	(52)	Press Wheel	1
24	Big Washer	1	(24)	Screw Plug M14×1	1	(53)	Foot Pedal	1
25	Spring Washer	1	(25)	Set Screw	1	(54)	Rubber Cover	1
26	Hex Cap Bolt	1	(26)	O-ring ϕ 16×2.4	1	(55)	O-ring 10×1.9	1
27	Fixed Wheel Holder	2	(27)	Spring	1	(56)	Air Breather M10×1	1
			(28)	Valve Core	1	(57)	Hex Cap Plug M4	1
			(29)	Valve Cover	1			