

HT-10-2036A ASSEMBLY INSTRUCTIONS

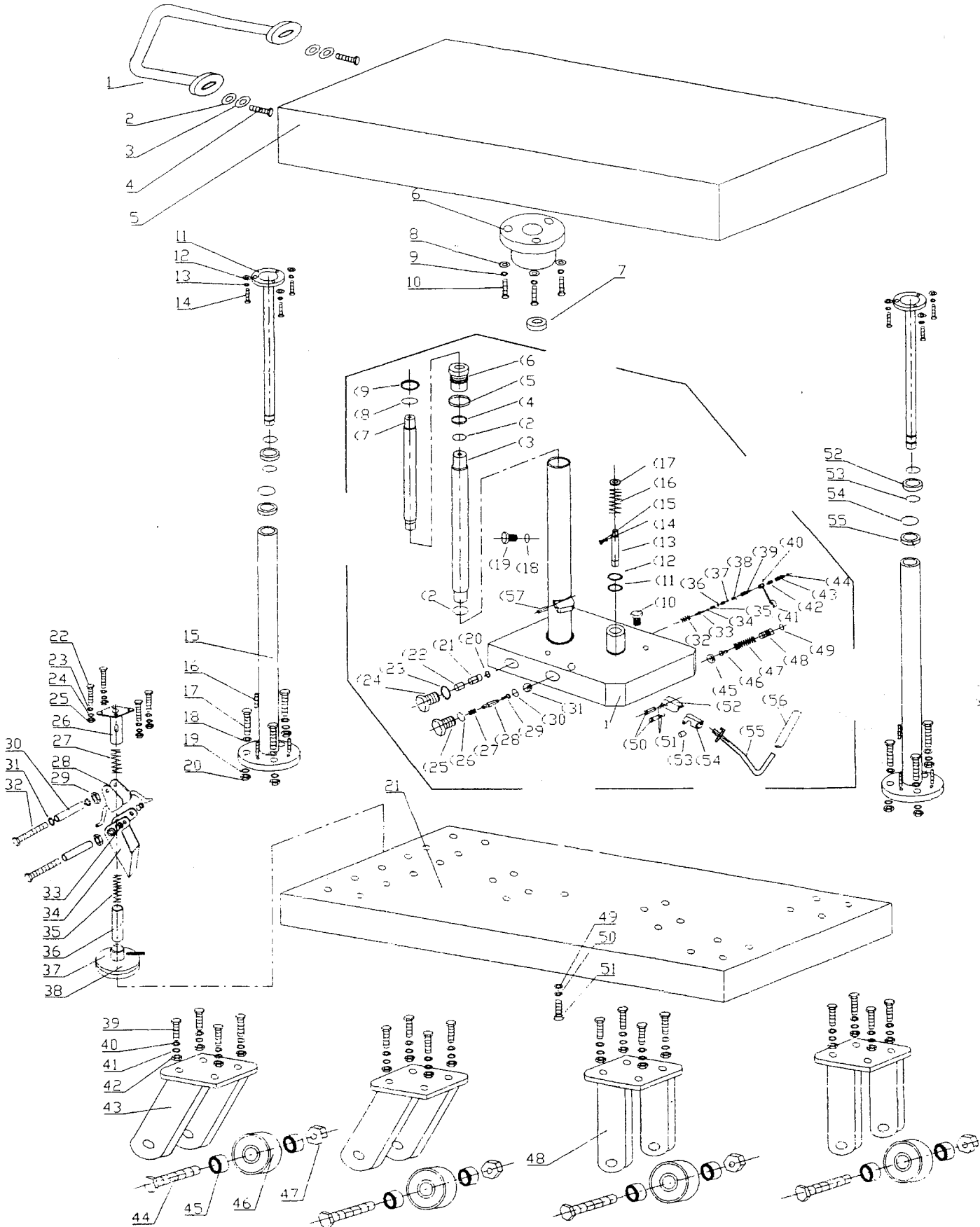
BASIC DATA:

MODEL	CAPACITY	LOWERED HEIGHT	RAISED HEIGHT	TABLE DIMENSIONS	NET WEIGHT
HT-10-2036A	1,00LBS.	36"	54"	20" X 36"	187 LBS.

ASSEMBLY INSTRUCTIONS:

1. Put the frame on the ground, install outer guide posts (#15), and secure them by M8 bolt (#17), flat washer (#18) and lock nut (#20).
2. Install hydraulic cylinder on the frame, and secure it with big washer (#49), spring washer (#50) and M12 bolt (#51).
3. Remove solid plug on top end of the cylinder and replace it with bleeder (vent) plug to allow air to be bled from the hydraulic system.
4. Lift up the cylinder to ½" height, join the cylinder joint block (#6) to the lift piston (#7), and secure them by nut (#7).
5. Use spanner to tighten nut (#7) under the table.
6. Install inner guide posts (#11) and secure them with M8 bolt (#14), spring washer (#13) and flat washer (#12).
7. Install push/pull handle (#1) on front side of the table (#5), and secure it with M8 bolt (#4), spring washer (#3) and flat washer (#2).
8. Adjust the verticality of inner guide post (#11) and outer guide post (#15) with the help of M8 bolt (#16).
- 9. Now tighten all bolts & nuts.**
- 10. Check all the parts, and then test this lift table with weight and without weight.**

HT-10 Post Hydraulic Table



HT-10 Post Hydraulic Table

No.	Description	Q'ty	No.	Description	Q'ty	No.	Description	Q'ty
1	Handle	1	38	Spring Pin $\varnothing 8 \times 35$	1	(20)	O-ring 9×1.8	1
2	Flat Washer	2	39	Hex Cap Bolt M10 \times 30	16	(21)	Lowering Valve	1
3	Spring Washer	2	40	Flat Washer $\varnothing 10$	16	(22)	Washer $\varnothing 12 \times 8$	1
4	Hex Cap Bolt	2	41	Spring Washer $\varnothing 10$	16	(23)	Washer $\varnothing 14$	1
5	Table	1	42	Hex Cap Nut M10	16	(24)	Screw Plug M14 \times 1	1
6	Cylinder Joint Bolck	1	43	Swivel Wheel Holder	2	(25)	Set Screw	1
7	Round Nut	1	44	Hex Cap Bolt	2	(26)	O-ring $\varnothing 16 \times 2.4$	1
8	Flat Washer $\varnothing 8$	3	45	Bearing	8	(27)	Spring	1
9	Spring Washer $\varnothing 8$	3	46	Wheel	4	(28)	Valve Core	1
10	Hex Cap Bolt M8 \times 20	3	47	Hex Cap Nut M8	4	(29)	Valve Cover	1
11	Inter Guide Post	2	48	Fixed Wheel Holder	2	(30)	O-ring $\varnothing 10 \times 1.9$	1
12	Flat Washer	6	49	Big Washer	1	(31)	Steel Ball $\varnothing 7$	1
13	Spring Washer	6	50	Spring Washer	1	(32)	Spring	1
14	Hex Cap Bolt M8 \times 20	6	51	Hex Cap Bolt M12 \times 20	1	(33)	Push Rod	1
15	Outer Guide Post	2	52	Separate Cover	2	(34)	O-ring $\varnothing 15 \times 2.4$	1
16	Set Bolt M8 \times 10	6	53	Steel Wire C-ring	4	(35)	Push Rod Cover	1
17	Hex Cap Bolt M8 \times 35	6	54	Steel Wire C-ring	2	(36)	Guide Cover	1
18	Flat Washer	6	55	Separate Cover	2	(37)	Pin	1
19	Spring Washer	6	(1)	Valve	1	(38)	Spring	1
20	Hex Cap Nut	6	(2)	O-ring 32.5×1.8	2	(39)	Link Rod	1
21	Frame	1	(3)	Inter Cylinder	1	(40)	M6 Bolt	1
22	Hex Cap Bolt M8 \times 20	4	(4)	Dust Cover DH28	1	(41)	Slice	1
23	Flat Washer	4	(5)	O-ring 56×3.5	1	(42)	Bushing	1
24	Spring Washer	4	(6)	Cylinder Cover	1	(43)	Bolt	1
25	Hex Cap Nut	4	(7)	Lift Piston	1	(44)	Nut	1
26	Brake Holder	1	(8)	O-ring 34×3.5	1	(45)	Steel Ball $\varnothing 7$	1
27	Spring	1	(9)	Dust Cover DH28	1	(46)	Spring Seat	1
28	Wave Arm	1	(10)	Hex Cap Bolt	1	(47)	Spring	1
29	Set Nut M8	1	(11)	Oil Seal UHS31.5	1	(48)	Set Screw	1
30	Pipe Cover	2	(12)	Dust Cover DH31.5	1	(49)	O-ring 10×1.9	1
31	Flat Washer	4	(13)	Pump Piston	1	(50)	Shaft	2
32	Hex Cap Bolt M8 \times 55	2	(14)	Compose Washer $\varnothing 4$	1	(51)	C-ring	2
33	Screw $\varnothing 8$	2	(15)	Hex Cap Plug $\varnothing 4$	1	(52)	Rotate Block	1
34	Foot Pedal	1	(16)	Spring Seat	1	(53)	Press Wheel	1
35	Spring	1	(17)	C-ring $\varnothing 15$	1	(54)	Press Wheel Seat	1
36	Center Pipe	1	(18)	O-ring $\varnothing 11 \times 1.9$	1	(55)	Foot Pedal Rod	1
37	Control Slice	1	(19)	Hex Cap Plug M10 \times 1	1	(56)	Foot Pedal Cover	1