

FOLDING MEZZANINE LADDER, LAD-FM-96

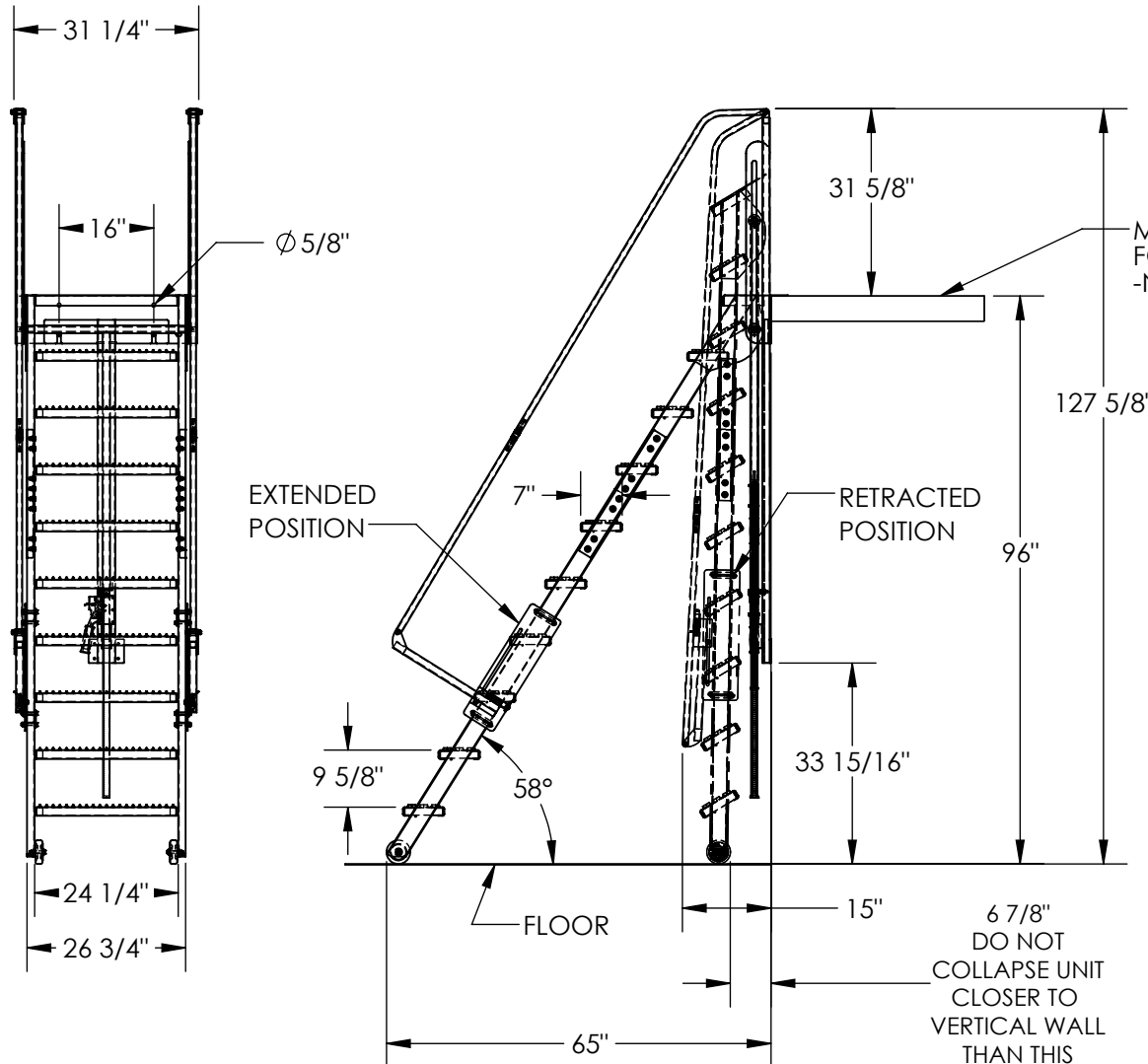
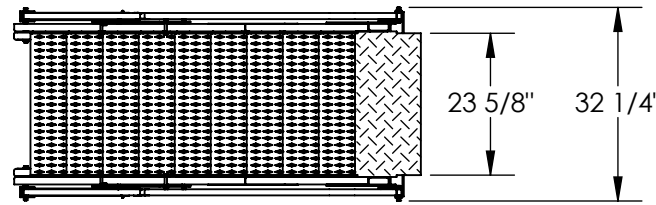
APPROX WEIGHT: 328.54 lbs.
 DOES NOT INCLUDE WEIGHT OF POWER OR PACKAGING!!!

*** ANY ADDITIONS, DELETIONS, OR OMISSIONS MUST BE CORRECTED ON THIS DRAWING AS THIS DRAWING WILL BE CONSIDERED ALL INCLUSIVE ***

ALL GRAPHICS PROVIDED ARE FOR REFERENCE ONLY. IF CERTAIN DIMENSIONS ARE CRITICAL PLEASE VERIFY THOSE DIMENSIONS WITH YOUR SALESPERSON

STANDARD FEATURES

MODEL NUMBER: LAD-FM-96
 OVERALL WIDTH: 32 1/4"
 USABLE STEP WIDTH: 24 1/4"
 HANDRAIL HEIGHT: 31 5/8"
 STEP MATERIAL: SERRATED STEEL
 STEP DEPTH: 7"
 MAX CAPACITY: 350 LBS.
 MEZZANINE HEIGHT: 96"
 (MEZZANINE HEIGHT TOLERANCE: ± 1/2")
 STEP HEIGHT SPACING: 9 5/8"
 EXTENDED LENGTH: 65"
 COLLAPSED LENGTH: 15" (APPROX.)
 TOUGH BAKED IN POWDER COATED
 BLUE AND YELLOW FINISH



MEZZANINE SHOWN FOR REFERENCE ONLY -NOT INCLUDED

SPECIAL FEATURES
 NONE

IT IS THE CUSTOMER'S RESPONSIBILITY TO MAKE SURE THAT THIS UNIT COMPLIES WITH ALL LOCAL SAFETY LAWS, CODES AND REGULATIONS

DIMENSION TOLERANCE ± 1/4"

APPROVAL

I, THE UNDERSIGNED, AGREE THAT THE PRODUCT AS REPRESENTED SATISFIES DESIGN AND DIMENSION REQUIREMENTS. I ALSO ACKNOWLEDGE MY DUTY TO CONFIRM PRODUCT AND INSTALLATION COMPLIANCE WITH ALL APPLICABLE FEDERAL, STATE AND LOCAL REGULATIONS AND STANDARDS.
UNITS REQUIRING APPROVAL DRAWINGS OR MODIFIED ARE NON-RETURNABLE

[] As drawn [] As marked

Signed: _____ Date: _____

Printed Name: _____

LEAD TIME WILL START UPON RECEIPT OF SIGNED APPROVAL DRAWING

DISTRIBUTOR'S NAME:		P.O.#
VESTIL MANUFACTURING		X
DRAWN BY: TAW		W.O.#
DATE: 1/4/2017		X
REFERENCE: X	SCALE: 1:32	SALES: X
QUOTED LEAD TIME: X	QUOTE #	FILE NAME:
	X	44-007-593