

Lever Chain Hoists

Black Load Chain



- Complies with ASME B30.21
- Automatic, Double-Pawl, Braking System
- Grade 80, High-Quality, Heat Treated, Steel Load Chain
- Forged Steel Hooks
- Up to 6 Tons
- Standard 10' lift
- Overload Protection
- **Custom Lift Heights Available Upon Request**

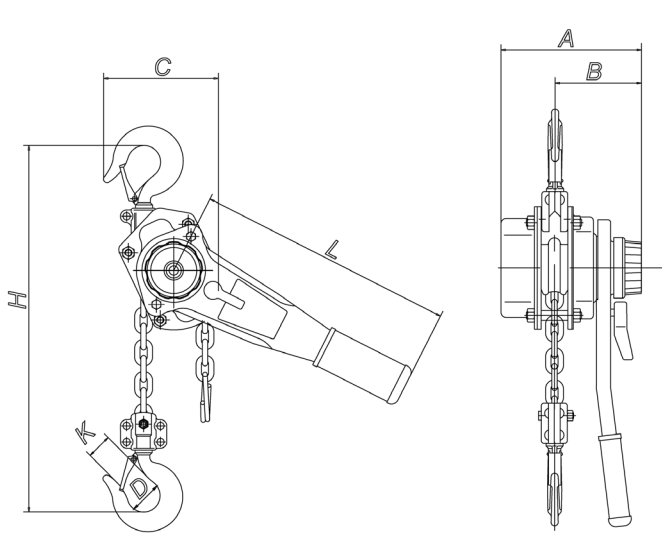


Lever Chain Hoists

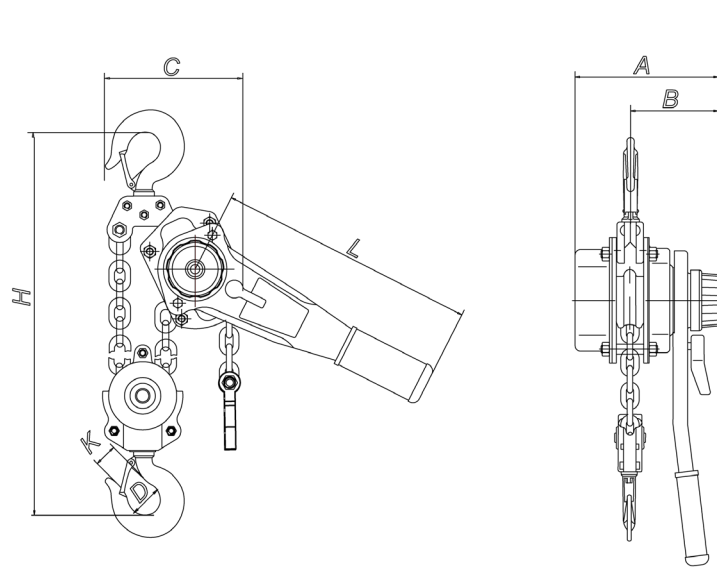
Black Load Chain



BISON
LIFTING EQUIPMENT



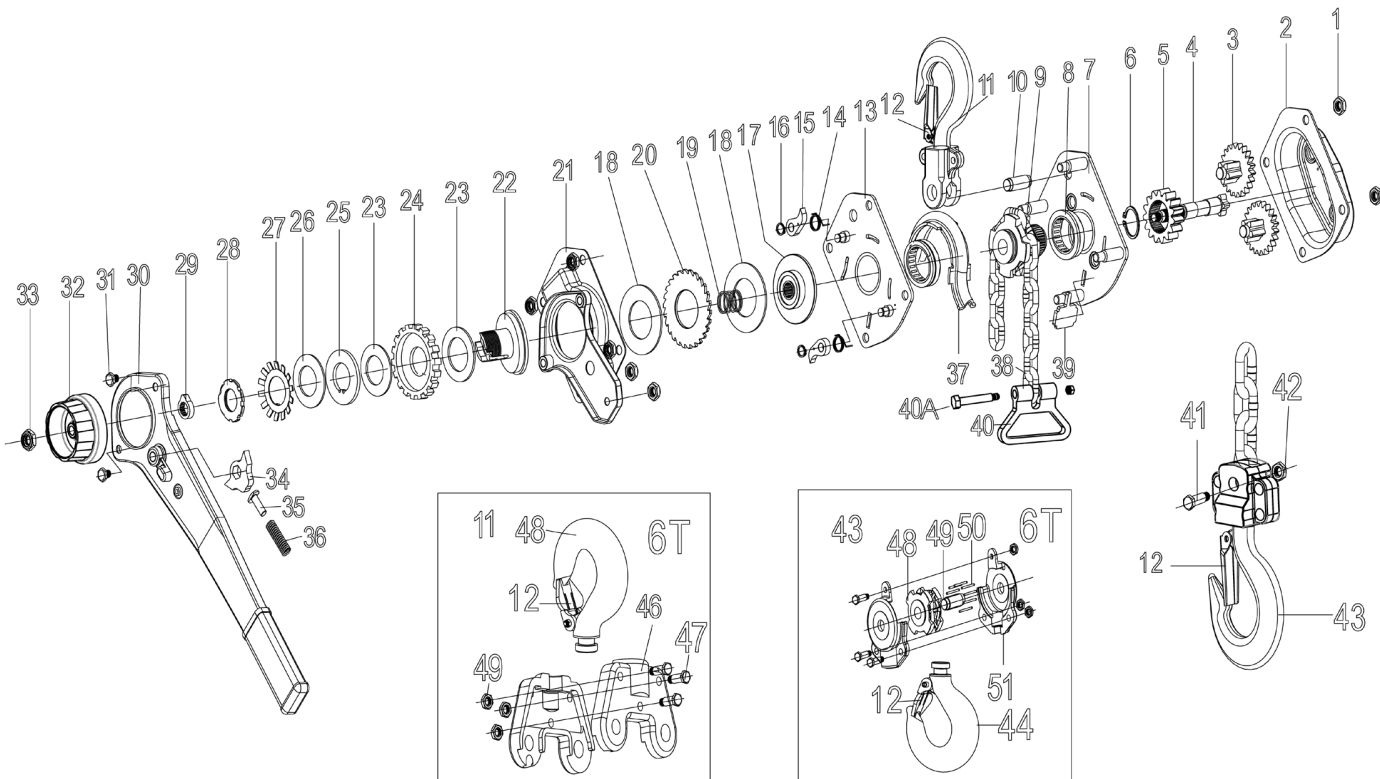
3/4 T - 3 T



6 T

Model	Capacity (Tons)	Standard Lift (Feet)	Load chain diam. (Millimeters)	Chain fall lines	A (Inches)	B (Inches)	C (Inches)	D (Inches)	H (Inches)	L (Inches)	K (Inches)	Net Weight (Pounds)
LH75-OL	3/4	10 Ft.	6 mm	1	5.71 in	3.39 in	5.28 in	1.50 in	13.39 in	11.02 in	1.06 in	18 lbs
LH105-OL	1 1/2	10 Ft.	8 mm	1	6.89 in	3.94 in	5.91	1.89 in	14.96 in	16.14 in	1.42 in	26 lbs
LH30-OL	3	10 Ft.	10 mm	1	7.68 in	4.53 in	7.48 in	1.97 in	19.29 in	16.14 in	1.50 in	46 lbs
LH60-OL	6	10 Ft.	10 mm	2	7.68 in	4.53 in	9.53 in	2.56 in	24.41 in	16.14 in	1.89 in	77 lbs

Subject to technical changes without prior notice



Overload Protection Lever Chain Hoists