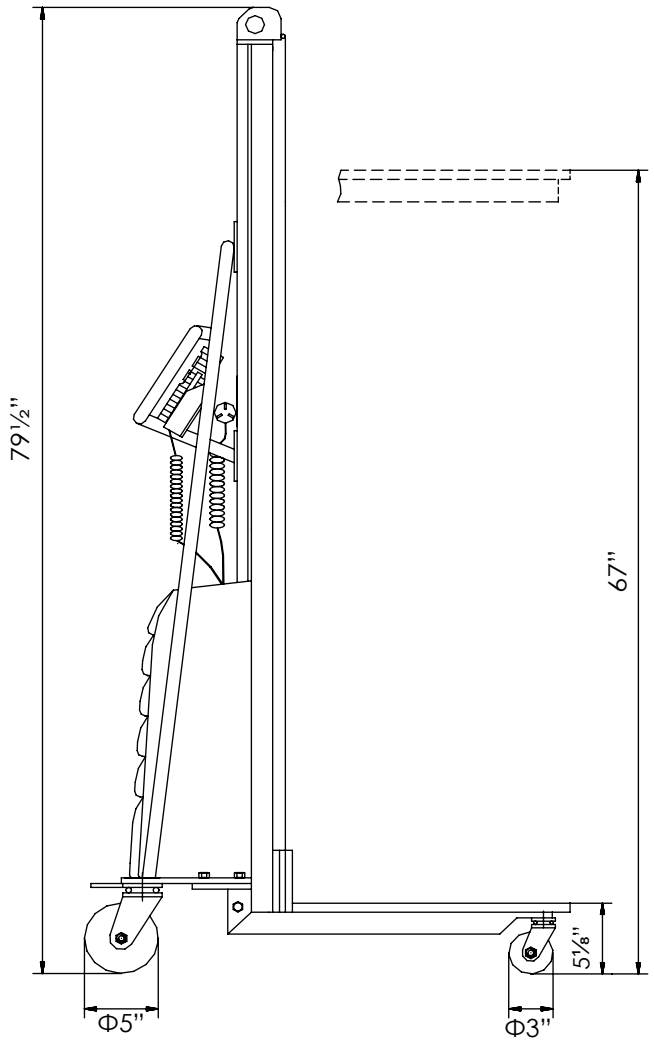
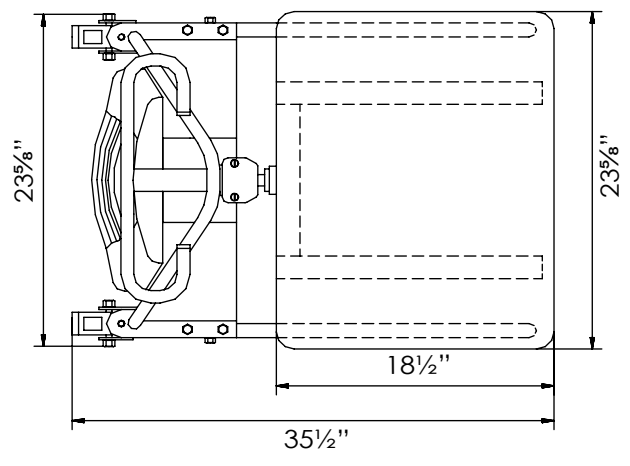


STEEL DC POWERED WORK POSITIONER - MWP-550-DC

ANY ADDITIONS, DELETIONS, OR OMISSIONS MUST BE CORRECTED ON THIS DRAWING AS THIS DRAWING WILL BE CONSIDERED ALL INCLUSIVE
 ALL GRAPHICS PROVIDED ARE FOR REFERENCE ONLY. IF CERTAIN DIMENSIONS ARE CRITICAL PLEASE VERIFY THOSE DIMENSIONS WITH YOUR SALESPERSON

APPROX WEIGHT: 279 lbs.
 DOES NOT INCLUDE WEIGHT OF POWER OR PACKAGING!!!



SPECIFICATIONS

- MODEL NUMBER IS: MWP-550-DC
- UNIFORM CAPACITY IS: 550 Lbs.
- OVERALL WIDTH IS: 23 5/8"
- OVERALL LENGTH IS: 35 1/2"
- OVERALL HEIGHT IS: 79 1/2"
- PLATFORM WIDTH IS: 23 5/8"
- PLATFORM LENGTH IS: 18 1/2"
- PLATFORM SERVICE RANGE IS: 5 1/4" - 67"
- TOUGH BAKED IN POWDER COATED BLUE FINISH

DIMENSION TOLERANCE ± 1/2"

A P P R O V A L	I, THE UNDERSIGNED, AGREE THAT THE PRODUCT AS REPRESENTED SATISFIES DESIGN AND DIMENSION REQUIREMENTS. I ALSO ACKNOWLEDGE MY DUTY TO CONFIRM PRODUCT AND INSTALLATION COMPLIANCE WITH ALL APPLICABLE FEDERAL, STATE AND LOCAL REGULATIONS AND STANDARDS.	
	UNITS REQUIRING APPROVAL DRAWINGS OR MODIFIED ARE NON-RETURNABLE	
	[] As drawn [] As marked	
	Signed: _____ Date: _____	
Printed Name: _____		
<i>LEAD TIME WILL START UPON RECEIPT OF SIGNED APPROVAL DRAWING</i>		

DISTRIBUTOR'S NAME:		P.O.#
VESTIL MANUFACTURING		X
		W.O.#
DRAWN BY: TM		X
DATE: 01/19/2022		SALES: X
REFERENCE: X	SCALE: NTS	FILE NAME:
QUOTED LEAD TIME: X	QUOTE # X	MWP-550-DC