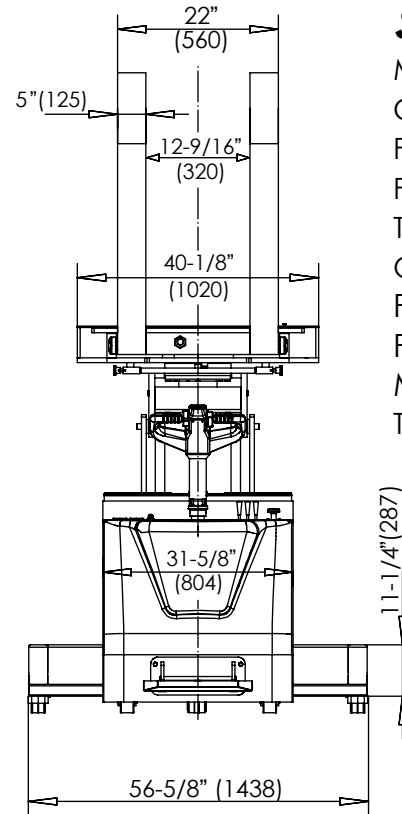
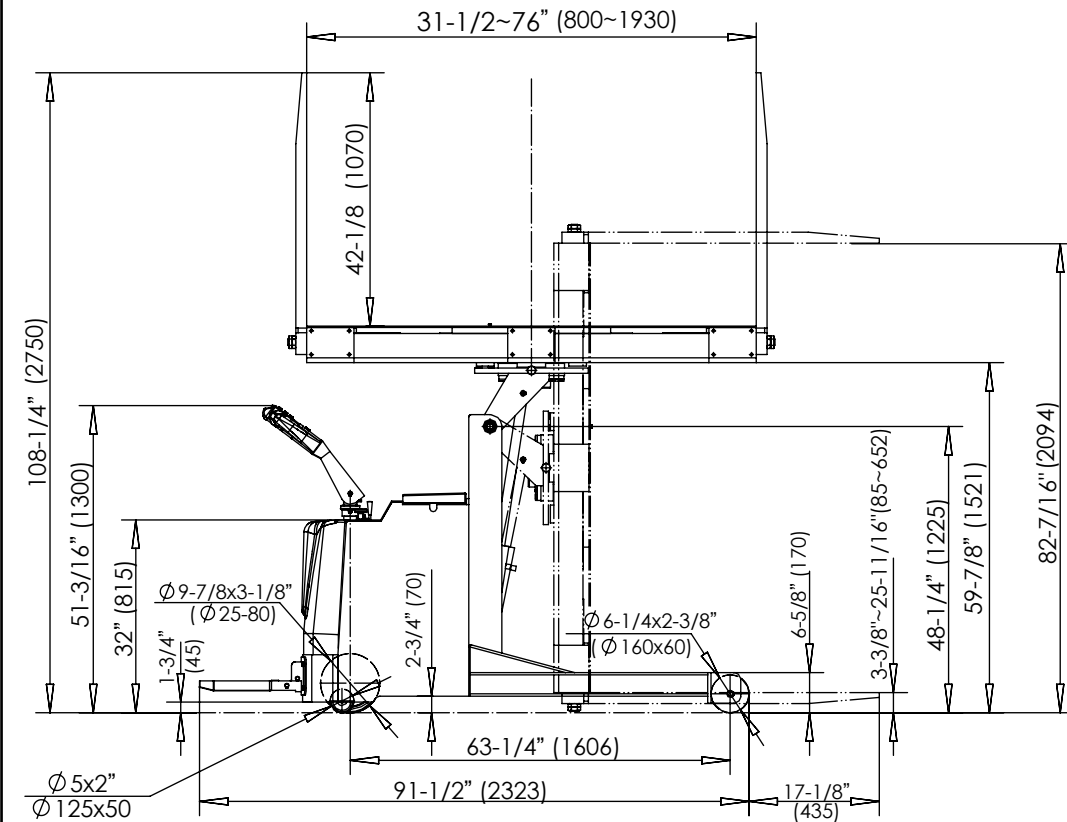


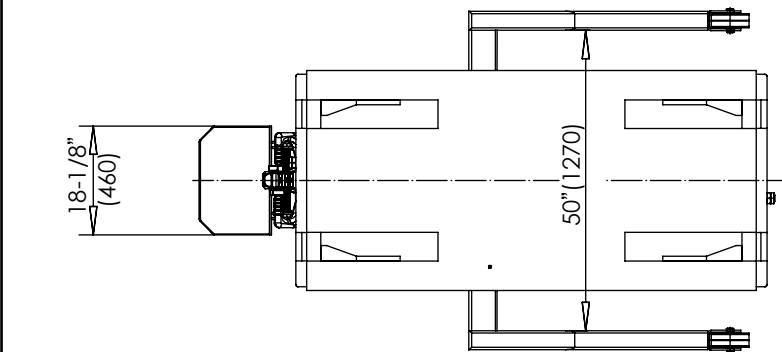
PORTABLE PALLET INVERTER W/ STRADDLE LEGS - PI-P-SL-3000-3276

*** ANY ADDITIONS, DELETIONS, OR OMISSIONS MUST BE CORRECTED ON THIS DRAWING AS THIS DRAWING WILL BE CONSIDERED ALL INCLUSIVE ***
 ALL GRAPHICS PROVIDED ARE FOR REFERENCE ONLY. IF CERTAIN DIMENSIONS ARE CRITICAL PLEASE VERIFY THOSE DIMENSIONS WITH YOUR SALESPERSON



SPECIFICATIONS:

MODEL NO: PI-P-SL-3000-3276
 CAPACITY: 3,000 LBS
 FORK SIZE: 22" X 42 1/8"
 FORK OPENING: 31 1/2" - 76"
 TURN RADIUS: 84 1/2"
 OVERALL SIZE: 113 1/8" X 56 5/8" X 82 1/2"
 POWERED PALLET TRUCK
 POWERED TILT UP / DOWN
 MANUAL ROTATION
 TOUGH BAKED IN POWDER COATED
 BLACK & YELLOW FINISH



DIMENSION TOLERANCE $\pm 1/2"$

APPROVAL

I, THE UNDERSIGNED, AGREE THAT THE PRODUCT AS REPRESENTED SATISFIES DESIGN AND DIMENSION REQUIREMENTS. I ALSO ACKNOWLEDGE MY DUTY TO CONFIRM PRODUCT AND INSTALLATION COMPLIANCE WITH ALL APPLICABLE FEDERAL, STATE AND LOCAL REGULATIONS AND STANDARDS.
UNITS REQUIRING APPROVAL DRAWINGS OR MODIFIED ARE NON-RETURNABLE

As drawn As marked

Signed: _____ Date: _____

Printed Name: _____

LEAD TIME WILL START UPON RECEIPT OF SIGNED APPROVAL DRAWING

TRAVEL SPEED UNLOADED: 3.7m/h
 TRAVEL SPEED LOADED: 2.5m/h
 DRIVE MOTOR: 24V/1.2KW
 LIFT MOTOR: 24V/2.0KW
 BATTERY: 4 - 6V/200Ah
 BATTERY CHARGER: 24V

FORK CLAMPING W/O LOAD: 9.5 SEC
 FORK OPENING W/O LOAD: 10 SEC
 FORK CLAMPING W/ LOAD: 14 SEC
 FORK OPENING W/ LOAD: 7.5 SEC
 FORK TILTING UP W/O LOAD: 15 SEC
 FORK LOWERING DOWN W/O LOAD: 14 SEC
 FORK TILTING UP W/ LOAD: 23 SEC
 FORK LOWERING DOWN W/ LOAD: 13.5 SEC

DISTRIBUTOR'S NAME:		P.O.#
VESTIL MANUFACTURING		X
W.O.#	X	
DRAWN BY: TM	DATE: 3/3/2020	SALES: X
REFERENCE: X	SCALE: NTS	FILE NAME:
QUOTED LEAD TIME: X	QUOTE # X	PI-P-SL-3000-3276