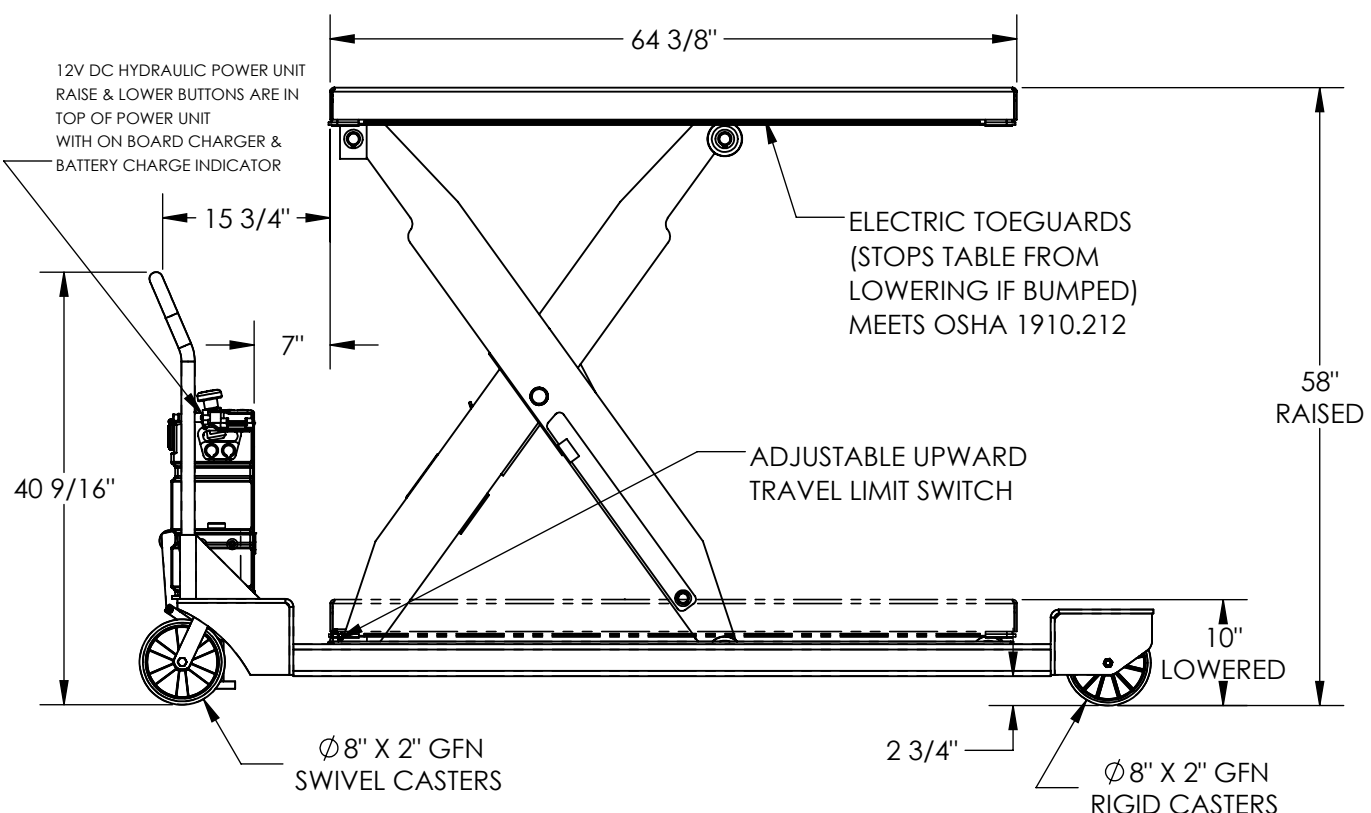
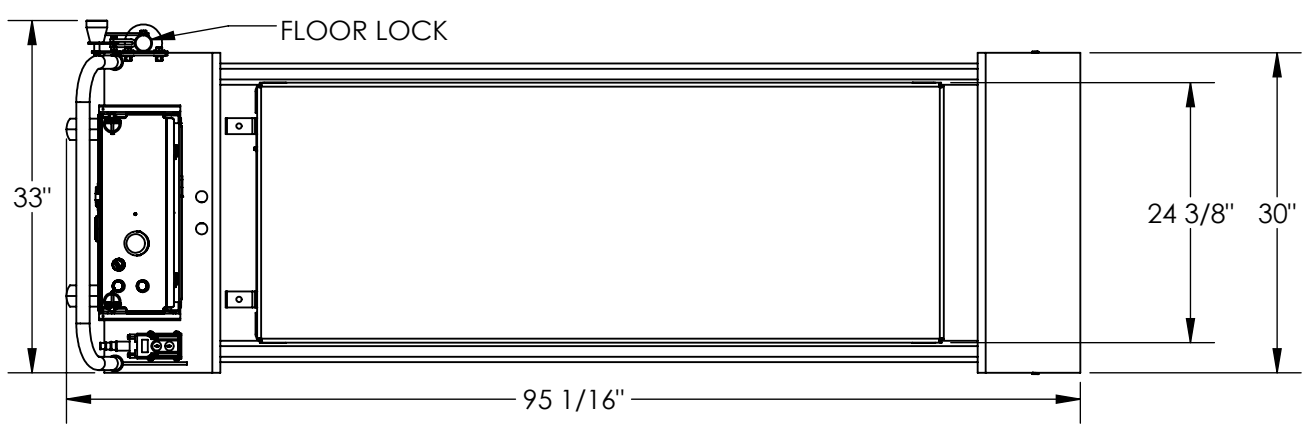


# PORTABLE SCISSOR TABLE - PST-2464-1-58

APPROX WEIGHT: 1022.12 lbs.  
 DOES NOT INCLUDE WEIGHT OF POWER OR PACKAGING!!!

\*\*\*ANY ADDITIONS, DELETIONS, OR OMISSIONS MUST BE CORRECTED ON THIS DRAWING AS THIS DRAWING WILL BE CONSIDERED ALL INCLUSIVE\*\*\*



ALL GRAPHICS PROVIDED ARE FOR REFERENCE ONLY. IF CERTAIN DIMENSIONS ARE CRITICAL PLEASE VERIFY THOSE DIMENSIONS WITH YOUR SALESPERSON

DIMENSION TOLERANCE  $\pm 1/2"$   
 TABLE HEIGHT TOLERANCE  $\pm 1/2"$   
 DECK FLATNESS  $\pm 1/4"$

## STANDARD FEATURES

- MODEL NUMBER: PST-2464-1-58
- CAPACITY: 1,000 LBS
- PLATFORM WIDTH: 24 3/8"
- PLATFORM LENGTH: 64 3/8"
- PLATFORM LOWERED HEIGHT: 10"
- PLATFORM RAISED HEIGHT: 58"
- OVERALL WIDTH: 33"
- OVERALL LENGTH: 95 1/16"
- GROUND CLEARANCE: 2 3/4"
- CASTERS: (2) Ø8" X 2" GFN SWIVEL  
(2) Ø8" X 2" GFN RIGID
- 12V DC POWER UNIT W/ ON-BOARD CHARGER & BATTERY CHARGE INDICATOR
- DURABLE LIQUID PAINT BLUE FINISH

## SPECIAL FEATURES

NONE

**APPROVAL**

I, THE UNDERSIGNED, AGREE THAT THE PRODUCT AS REPRESENTED SATISFIES DESIGN AND DIMENSION REQUIREMENTS. I ALSO ACKNOWLEDGE MY DUTY TO CONFIRM PRODUCT AND INSTALLATION COMPLIANCE WITH ALL APPLICABLE FEDERAL, STATE AND LOCAL REGULATIONS AND STANDARDS.

**UNITS REQUIRING APPROVAL DRAWINGS OR MODIFIED ARE NON-RETURNABLE**

As drawn       As marked

Signed: \_\_\_\_\_ Date: \_\_\_\_\_

Printed Name: \_\_\_\_\_

*LEAD TIME WILL START UPON RECEIPT OF SIGNED APPROVAL DRAWING*

DISTRIBUTOR'S NAME:		P.O.#
<b>VESTIL MANUFACTURING</b>		X
DRAWN BY: KGH		DATE: 5/9/2018
REFERENCE: X		SCALE: 1:18
QUOTED LEAD TIME: X		QUOTE # X
		SALES: X
		FILE NAME: 01-007-379