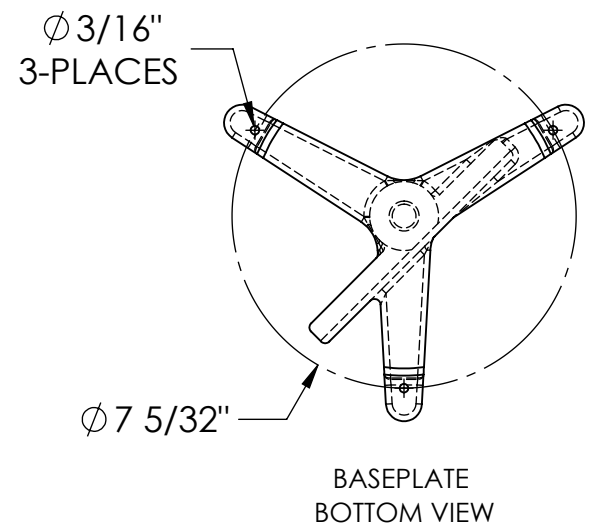
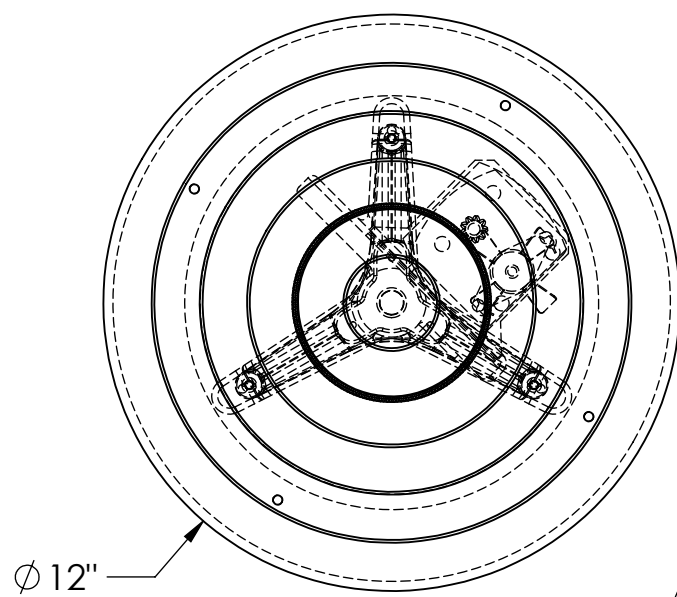


# POWERED TURNTABLE - PT-100

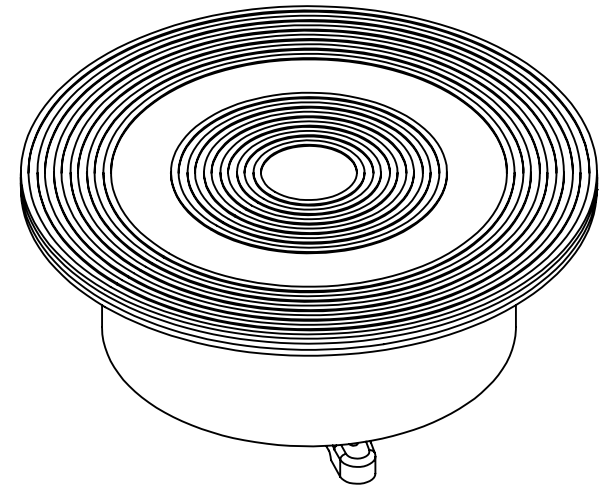
APPROX WEIGHT: 32.00 lbs.  
 DOES NOT INCLUDE WEIGHT OF POWER OR PACKAGING!!!

\*\*\* ANY ADDITIONS, DELETIONS, OR OMISSIONS MUST BE CORRECTED ON THIS DRAWING AS THIS DRAWING WILL BE CONSIDERED ALL INCLUSIVE \*\*\*

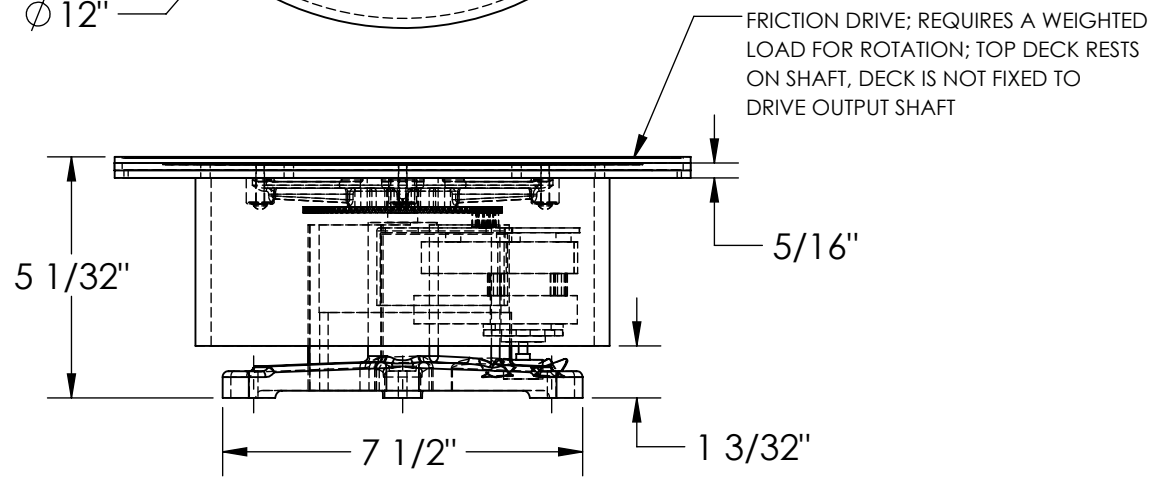
ALL GRAPHICS PROVIDED ARE FOR REFERENCE ONLY. IF CERTAIN DIMENSIONS ARE CRITICAL PLEASE VERIFY THOSE DIMENSIONS WITH YOUR SALESPERSON



NOTE:  
 -DO NOT STAND OR SIT ON UNIT  
 -MAXIMUM CAPACITY IS 100 LBS.  
 EVENLY DISTRIBUTED AND BALANCED;  
 NO OFFSET OR CANTILEVER LOADING.  
 -VARIABLE SPEED ROTATION NOT AVAILABLE  
 -UNIT TO BE FASTENED TO A FLAT, LEVEL SURFACE



DIMENSION TOLERANCE ± 1/4"



## STANDARD FEATURES

MODEL NUMBER IS PT-100  
 UNIFORM CAPACITY IS 100 LBS.  
 DIAMETER IS Ø12"  
 OVERALL HEIGHT IS 5 1/32"  
 3.5 RPM, CLOCKWISE ROTATION  
 115V SINGLE PHASE POWER SUPPLY

## SPECIAL FEATURES

NONE

**OPTIONAL FEATURE:**  
 (AVAILABLE AT AN ADDITIONAL COST)

\*PT-CCW: COUNTER CLOCKWISE ROTATION OPTION

FOR INTERNAL USE ONLY PROJECT SIGN OFF	
SALES	
ENG.	
FAB.	
POWER	

**APPROVAL**

I, THE UNDERSIGNED, AGREE THAT THE PRODUCT AS REPRESENTED SATISFIES DESIGN AND DIMENSION REQUIREMENTS. I ALSO ACKNOWLEDGE MY DUTY TO CONFIRM PRODUCT AND INSTALLATION COMPLIANCE WITH ALL APPLICABLE FEDERAL, STATE AND LOCAL REGULATIONS AND STANDARDS.

**ANY MODIFIED UNITS ARE NON-RETURNABLE**

[ ] As drawn [ ] As marked

Signed: \_\_\_\_\_ Date: \_\_\_\_\_

Printed Name: \_\_\_\_\_

LEAD TIME WILL START UPON RECEIPT OF SIGNED APPROVAL DRAWING

DISTRIBUTOR'S NAME:		P.O.#
VESTIL MANUFACTURING		X
DRAWN BY: R. THORSEN		W.O.#
DATE: 4/26/18		X
REFERENCE: X	SCALE: 1:4	SALES: X
QUOTED LEAD TIME: X	QUOTE #	FILE NAME:
	X	20-007-193