



VESTIL MANUFACTURING CORP.
 2999 North Wayne Street, P.O. Box 507, Angola, IN 46703
 Telephone: (260) 665-7586 -or- Toll Free (800) 348-0868
 Fax: (260) 665-1339
www.vestilmfg.com e-mail: sales@vestil.com

RLAD-series Portable 2-Step Ladders Instruction Manual



Receiving instructions:

After delivery, remove the packaging from the product. Inspect the product closely to determine whether it sustained damage during transport. If damage is discovered, record a complete description of it on the bill of lading. If the product is undamaged, discard the packaging.

NOTE:

The end-user is solely responsible for confirming that product design, installation, use, and maintenance comply with laws, regulations, codes, and mandatory standards applied where the product is used.

Table of Contents

Signal words.....	2
Hazards of improper use.....	2
Specifications.....	3
FIG. 1: RLAD-2-y & RLAD-2-B exploded parts diagrams and bill of materials.....	3
FIG. 2: RLAD-P-2-Y & RLAD-P-2-B exploded parts diagram and bill of materials.....	4
Assembly instructions.....	4 - 5
Using the ladder.....	5
Inspections & Maintenance.....	6
Labeling diagram.....	6
Limited warranty.....	7

Signal Words:

This manual uses SIGNAL WORDS to direct attention to safety-related messages. Some signal words indicate the likelihood of personal injuries, as well as the probable seriousness of injuries that might occur if the product is misused in the ways described. Other signal words call attention to uses of the product likely cause property damage. Signal words used in this manual appear below along with the meaning of each word:



Identifies a hazardous situation which, if not avoided, WILL result in DEATH or SERIOUS INJURY. Use of this signal word is limited to the most extreme situations.



Identifies a hazardous situation which, if not avoided, COULD result in DEATH or SERIOUS INJURY.



Indicates a hazardous situation which, if not avoided, COULD result in MINOR or MODERATE injury.



Identifies practices likely to result in product/property damage, such as operation that might damage the ladder.

Hazards of Improper Use:



Vestil strives to identify foreseeable hazards associated with the use of its products. However, no manual can address every possible risk. The most effective means for avoiding injury is for the end-user to exercise good judgment whenever using the ladder. If this product is used improperly or carelessly, serious personal injuries or death could result. ALWAYS use the product properly:

- ***Failure to read and understand the entire manual before assembling, using or servicing the product constitutes misuse.***
- DO NOT exceed the capacity of the ladder. The total weight applied to the ladder (weight of the user plus tools, etc.) must be less than the capacity that appears on label 287 (see “Labeling diagram” on p. 6).
- DO NOT climb the ladder UNLESS all shoes (see FIGS. 1 & 2 on pp. 3 & 4) are intact and all 4 legs solidly contact the ground. The ladder must not wobble when supporting a person.
- DO NOT use the ladder on uneven or inclined surfaces. The surface must be able to support the ladder and a full capacity load. ONLY use the ladder on level, even surfaces.
- Remove foreign matter from your shoes before stepping onto the ladder.
- Only use the handle to move the ladder. DO NOT lean against the handle! Applying loads to the handle will cause the ladder to tip over
- Inspect the ladder as described in “Inspections & Maintenance” on p. 6. DO NOT use the ladder if it is not in normal condition. DO NOT use the ladder until it is restored to normal condition. ONLY use manufacturer-approved replacement parts.
- DO NOT use the ladder if any unusual noise or movement is observed while weight is applied to it. Remove the unit from service.
- DO NOT lean or reach over the sides of the ladder. Reposition the ladder if you cannot reach the object you want without leaning or reaching.
- DO NOT remove or obscure any label (see “Labeling diagram” on p. 6). All labels must be readable and undamaged.
- DO NOT modify this ladder without first obtaining written approval from Vestil. Unapproved modifications automatically void the limited warranty (see p. 7) and might make the ladder unsafe to use.

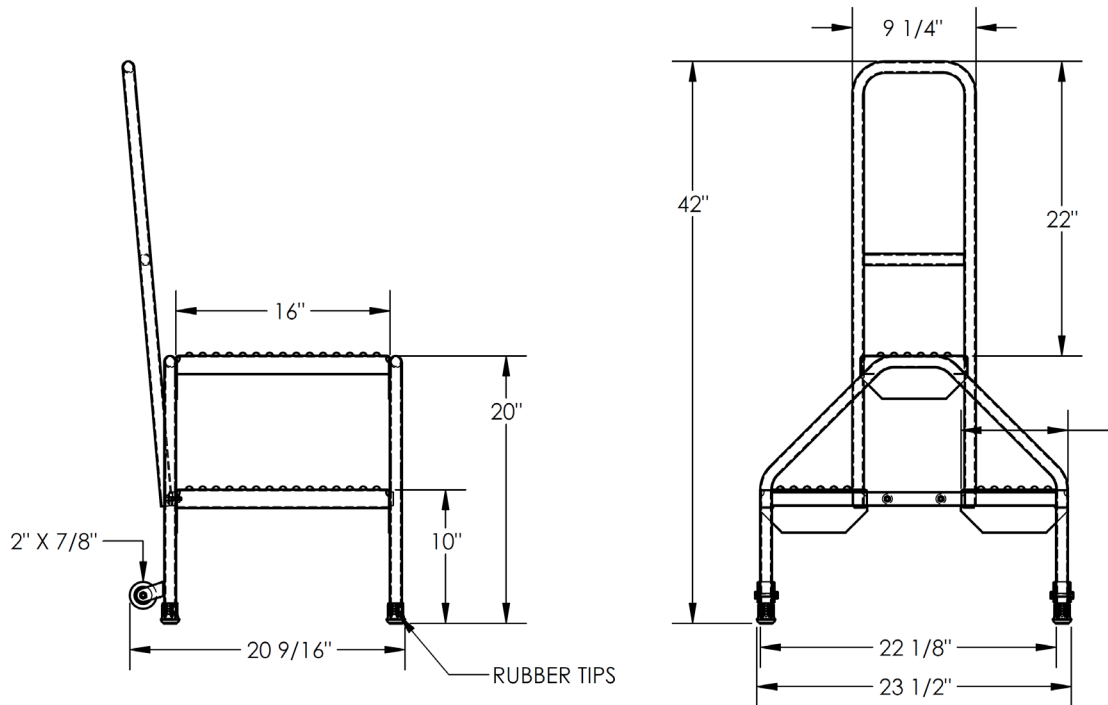


This product must be properly maintained to function properly.

- Keep the ladder clean & dry.
- Inspect and maintain the ladder in accordance with the “Inspections and Maintenance” section on p.6.

Specifications:

Dimensions, capacity, and net weight information for each RLAD model appears in the diagrams and table below.



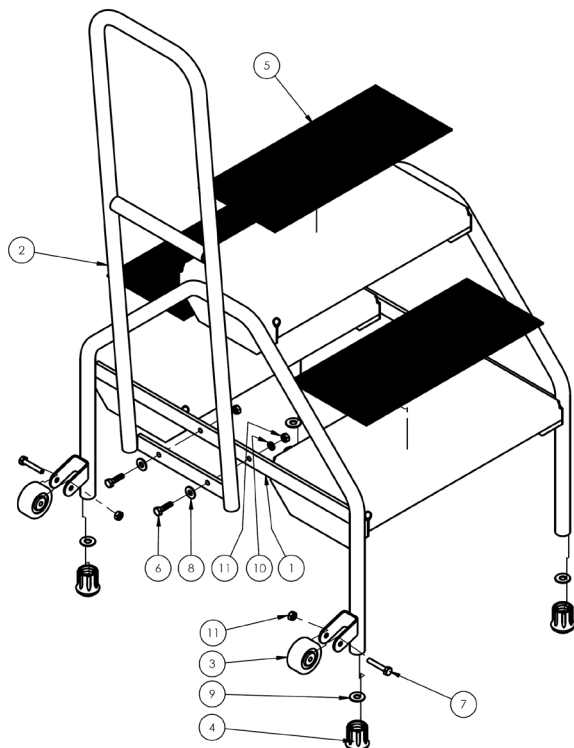
Standard features:

Overall width = 23 1/2"
 Usable width = 22 1/8"
 Overall length = 20 9/16"
 Usable length = 16"

Overall height = 42"
 Max. Capacity = 300 lb.
 Step depth = 8"
 Rubber casters = 2" x 7/8"

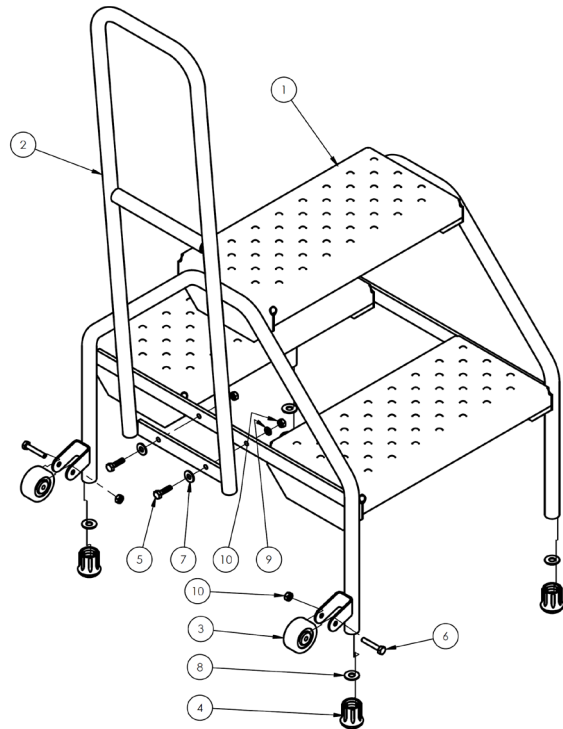
Net weight:
 RLAD-2-Y = 28.8 lb.
 RLAD-P-2-Y = 29.5 lb.
 RLAD-2-B = 28.8 lb.
 RLAD-P-2-B = 29.5 lb.

FIG. 1: RLAD-2-Y and RLAD-2-B exploded parts diagram and bill of materials



Item	Part no.	Description	Qty.
1	44-647-056	Weldment, flat step	1
2	44-525-001	Weldment, handle	1
3	16-132-225	2" x 7/8" x 1/4" bore rubber wheel	2
4	44-037-006	7/8" shaft chair tip ("shoe")	4
5	44-147-026	Rubber grip matting	3
6	11005	Bolt, 1/4"-20UNCx1", HHCS, #2, zinc-plated	2
7	11009	Hex bolt, grade A, zinc plated, 1/4"-20x1 1/2"	2
8	33004	Flat washer, USS, zinc plated, 1/4"	2
9	33006	Flat washer, zinc plated, USS 5/16"	4
10	33618	Medium split lock washer, 1/4"	2
11	37018	Nylon lock nut, grade 2, zinc finish, 1/4"-20	4

FIG. 2: RLAD-P-2-Y and RLAD-P-2-B exploded parts diagram and bill of materials

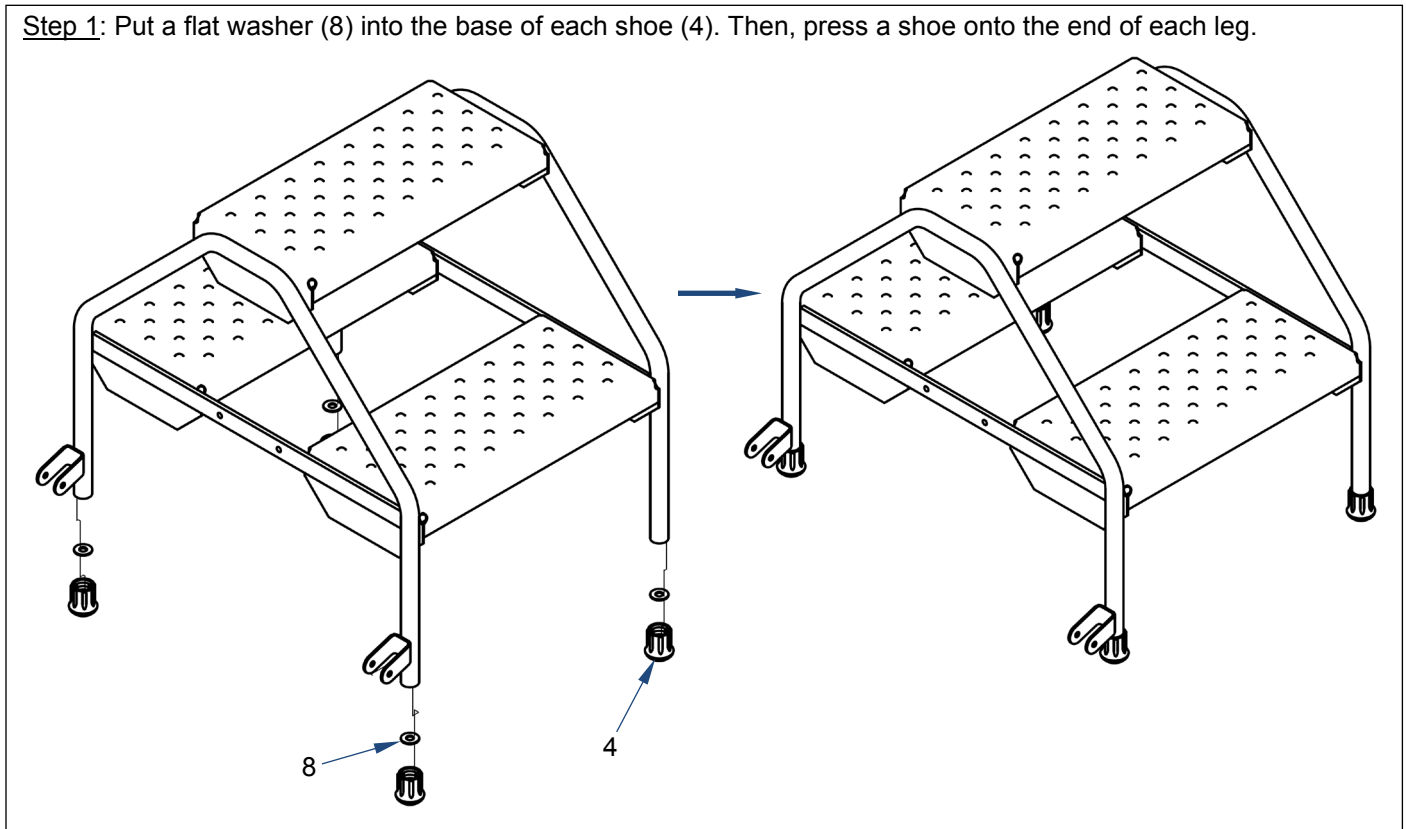


Item	Part no.	Description	Qty.
1	44-647-056	Weldment, flat step	1
2	44-525-001	Weldment, handle	1
3	16-132-225	2" x 1/8" x 1/4" bore rubber wheel	2
4	44-037-006	1/8" shaft chair tip ("shoe")	4
5	11005	Bolt, 1/4"-20UNCx1", HHCS, #2, zinc-plated	2
6	11009	Hex bolt, grade A, zinc plated, 1/4"-20x1 1/2"	2
7	33004	Flat washer, USS, zinc plated, 1/4"	2
8	33006	Flat washer, zinc plated, USS 5/16"	4
9	33618	Medium split lock washer, 1/4"	2
10	37018	Nylon lock nut, grade 2, zinc finish, 1/4"-20	4

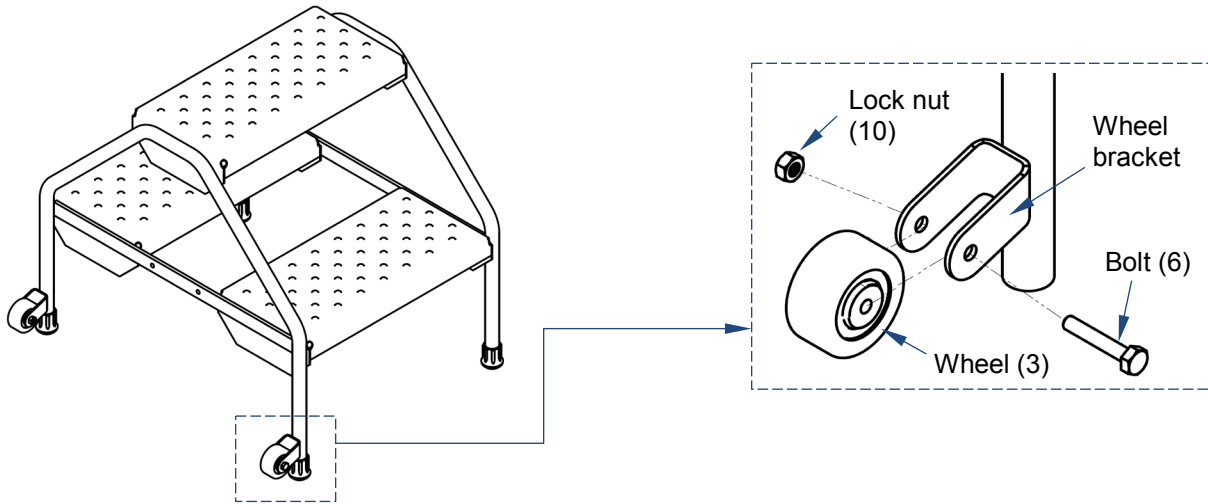
Assembly instructions:

Numbers in parentheses correspond to item numbers in the exploded parts diagrams (FIG. 2, above).

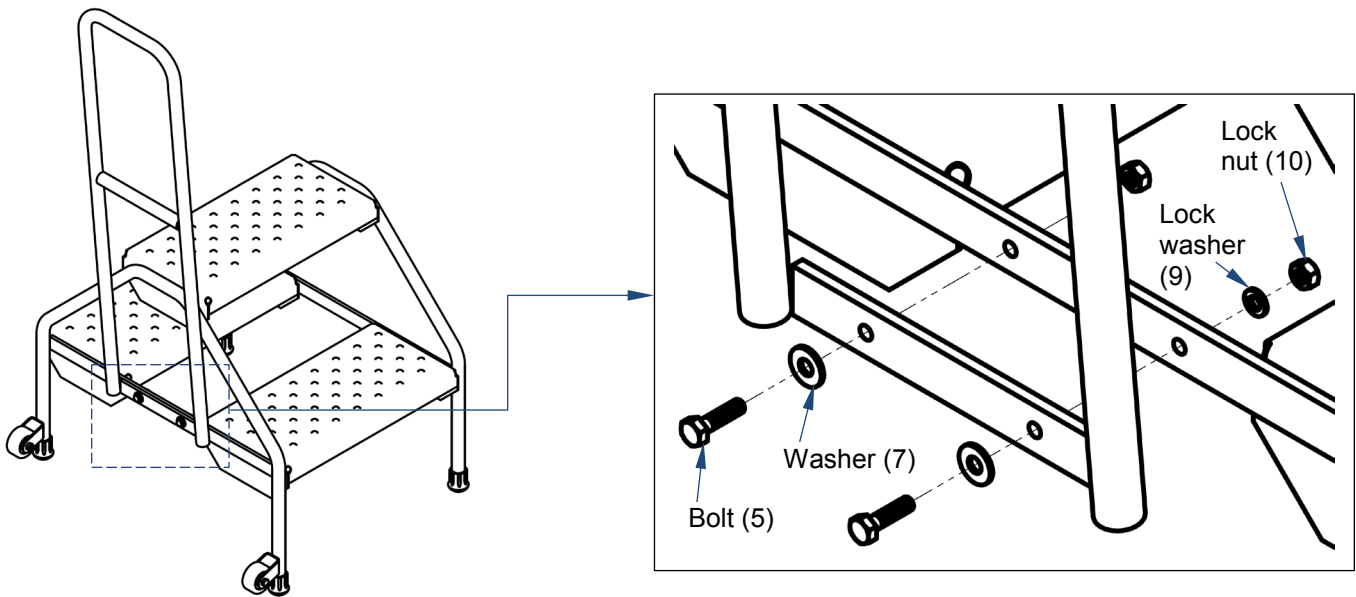
Step 1: Put a flat washer (8) into the base of each shoe (4). Then, press a shoe onto the end of each leg.



Step 2: Fasten the wheels (3) to the wheel brackets with $\frac{1}{4}$ "-20x $\frac{1}{2}$ " bolts (6) and $\frac{1}{4}$ "-20 lock nuts (10).



Step 3: Attach the handle to the frame with $\frac{1}{4}$ "-20x1" bolts, $\frac{1}{4}$ " flat washers and lock washers, and $\frac{1}{4}$ "-20 lock nuts as diagrammed below.



Using the ladder:

Before climbing the ladder, confirm that all four shoes are intact and make firm contact with the ground. The ladder should not be able to slide when the shoes are in satisfactory condition. Do not use the ladder if any of the shoes is not in satisfactory condition or missing. The ladder should not wobble at all and should only be used on level, even ground. Do not lean, or sit, on the handrail. The handrail is **ONLY** meant to be used to push or pull the ladder while rolling it.

To move the ladder, grasp the handle and lean the ladder back until the wheels contact the ground.

Inspections & Maintenance:

Before using the ladder for the first time, make a written record of its appearance. Include observations about the handle, frame, shoes, and wheels. The handle should be solidly connected to the frame. All 4 legs of the ladder should contact the ground. The shoes should prevent the ladder from sliding across the ground. This record establishes “normal condition”. During future inspections, compare the appearance of the unit to the written record to determine if it is in normal condition. DO NOT use the ladder unless it is in normal condition.

Inspect the following features as described below:

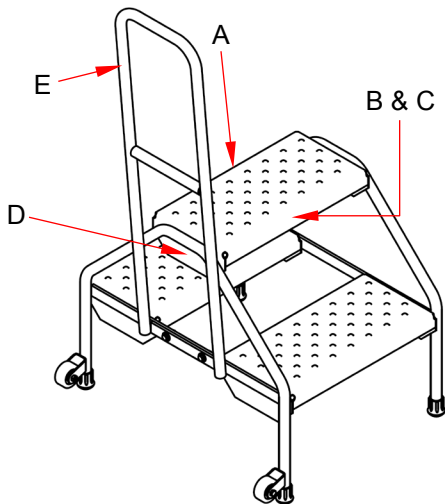
- **Wheels, wheel brackets, and wheel retaining hardware:** at least once per month inspect for cracks and damage. The wheels should *not* wobble while spinning but should roll smoothly and easily. Examine the bolts and retaining hardware. Wheel brackets should be square and rigid.
- **Frame:** Inspect weekly for damage such as excessive wear, warps, and cracks. The steps and legs should be square, rigid and free of rust and corrosion. Examine welds for cracks, etc. Remove rust with steel wool or a metal bristle brush and apply touch-up paint.
- **Handle:** Before each use, confirm that the handle is solidly fastened to the frame. Check all fasteners and tighten any connection that is loose. Replace the handle if there are any flattened/kinked areas, or if any welds are cracked or broken.
- **Shoes (on legs):** before each use, check the shoes for cracks and/or excessive or uneven wear. If a shoe is significantly worn or damaged, replace it before returning the ladder to service. DO not use the ladder unless all 4 shoes are in place, because the ladder will wobble if a shoe is missing.

Maintenance: in addition to correcting issues discovered during inspections, maintain the ladder by

- Cleaning it to remove dirt and grime, especially from step surfaces.
- Applying touchup paint wherever the finish is damaged.

Labeling diagram:

Each ladder should be labeled as shown below. Replace any label that is damaged or missing.



A: Label 821



B: Label 287

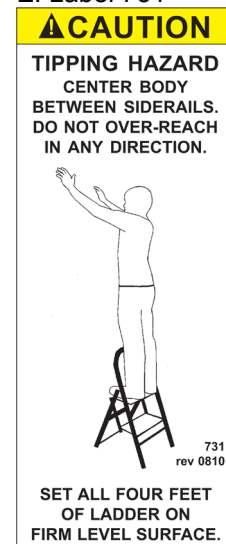
MODEL/MODÉLO/MODÈLE _____
STATIC CAPACITY (evenly distributed) _____ lbs.
LA CAPACIDAD CONSTANTE (distribuida uniformemente) _____ kgs.
CAPACITÉ STATIQUE (distribuée régulièrement) _____ kgs.
SERIAL/SERIE/SÉRIE _____

287 REV 0812

D: Label 904



E: Label 731



C: Label 740

⚠ WARNING	⚠ ADVERTENCIA	⚠ AVERTISSEMENT
<ul style="list-style-type: none"> • Do not use near live electric lines • Do not climb rails or lean over rails • Do not use if damaged or worn • Use ladder on level, smooth surfaces only 	<ul style="list-style-type: none"> • No use cerca de líneas eléctricas • No se suba o se asome en la barandilla • No use si está dañado o gastado • Use la escalera en superficies a nivel y lisas 	<ul style="list-style-type: none"> • Ne pas utiliser près des lignes électriques sous tension • Ne pas grimper sur ou vous pencher des rails • Ne pas utiliser si endommagée ou usagée • Utiliser l'échelle seulement sur des surfaces plates et lisses

LIMITED WARRANTY

Vestil Manufacturing Corporation ("Vestil") warrants this product to be free of defects in material and workmanship during the warranty period. Our warranty obligation is to provide a replacement for a defective original part if the part is covered by the warranty, after we receive a proper request from the warrantee (you) for warranty service.

Who may request service?

Only a warrantee may request service. *You are a warrantee if* you purchased the product from Vestil or from an authorized distributor AND Vestil has been fully paid.

What is an "original part"?

An original part is a part used to make the product as shipped to the warrantee.

What is a "proper request"?

A request for warranty service is proper if Vestil receives: 1) a photocopy of the Customer Invoice that displays the shipping date; AND 2) a written request for warranty service including your name and phone number. Send requests by any of the following methods:

<u>Mail</u>	<u>Fax</u>	<u>Email</u>
Vestil Manufacturing Corporation 2999 North Wayne Street, PO Box 507 Angola, IN 46703	(260) 665-1339 <u>Phone</u> (260) 665-7586	sales@vestil.com

In the written request, list the parts believed to be defective and include the address where replacements should be delivered.

What is covered under the warranty?

After Vestil receives your request for warranty service, an authorized representative will contact you to determine whether your claim is covered by the warranty. Before providing warranty service, Vestil may require you to send the entire product, or just the defective part or parts, to its facility in Angola, IN. The warranty covers defects in the following original dynamic components: motors, hydraulic pumps, electronic controllers, switches and cylinders. It also covers defects in original parts that wear under normal usage conditions ("wearing parts"), such as bearings, hoses, wheels, seals, brushes, and batteries.

How long is the warranty period?

The warranty period for original dynamic components is 90 days. For wearing parts, the warranty period is 90 days. The warranty periods begin on the date when Vestil ships the product to the warrantee. If the product was purchased from an authorized distributor, the periods begin when the distributor ships the product. Vestil may, at its sole discretion, extend the warranty periods for products shipped from authorized distributors by *up to* 30 days to account for shipping time.

If a defective part is covered by the warranty, what will Vestil do to correct the problem?

Vestil will provide an appropriate replacement for any covered part. An authorized representative of Vestil will contact you to discuss your claim.

What is not covered by the warranty?

1. Labor;
2. Freight;
3. Occurrence of any of the following, which automatically voids the warranty:
 - Product misuse;
 - Negligent operation or repair;
 - Corrosion or use in corrosive conditions;
 - Inadequate or improper maintenance;
 - Damage sustained during shipping;
 - Accidents involving the product;
 - Unauthorized modifications: DO NOT modify the product IN ANY WAY without first receiving written authorization from Vestil. Modification(s) might make the product unsafe to use or might cause excessive and/or abnormal wear.

Do any other warranties apply to the product?

Vestil Manufacturing Corp. makes no other express warranties. All implied warranties are disclaimed to the extent allowed by law. Any implied warranty not disclaimed is limited in scope to the terms of this Limited Warranty.

