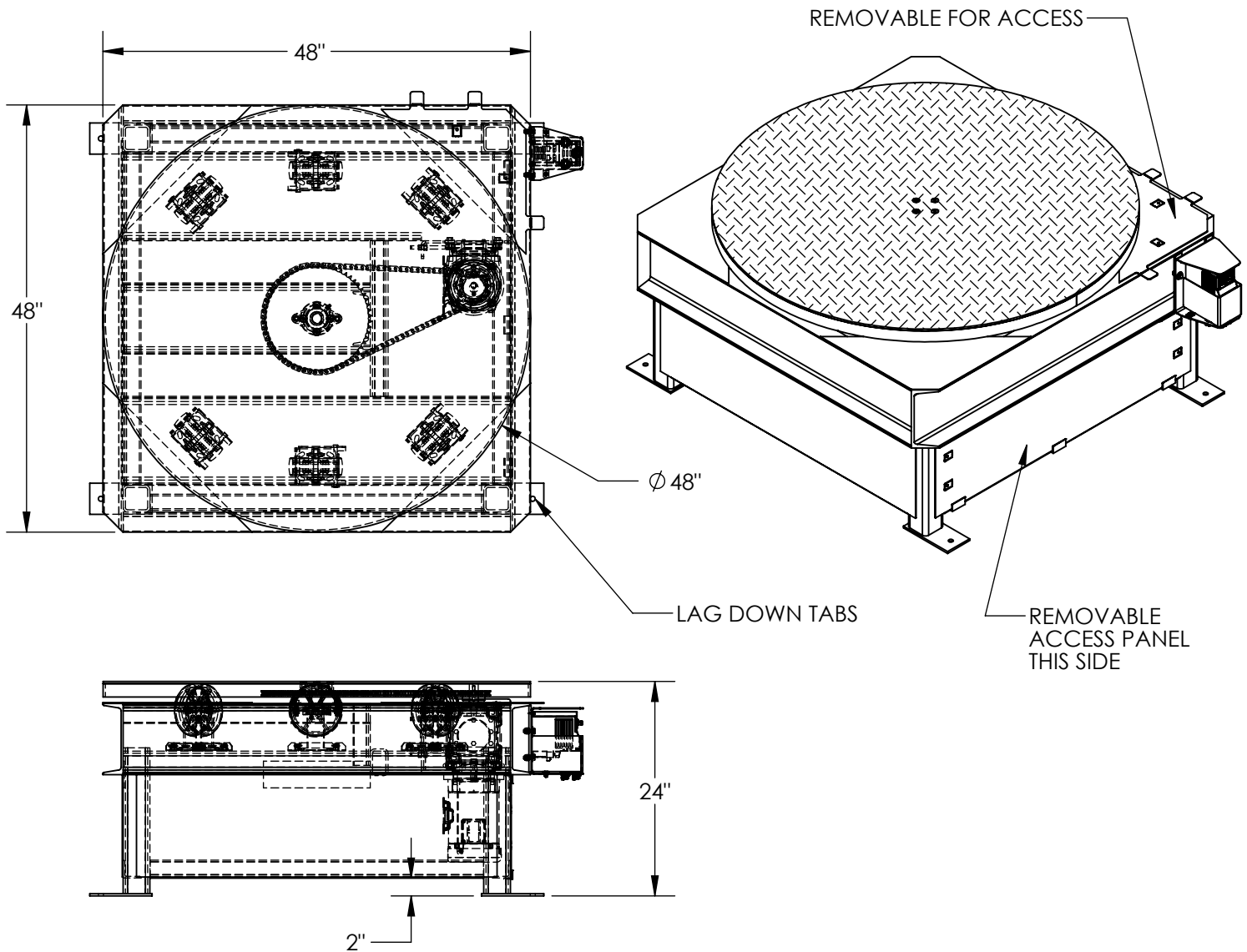


# STAND ALONE POWERED CAROUSEL - STPC-CD

APPROX WEIGHT: 858.09 lbs.  
 DOES NOT INCLUDE WEIGHT OF POWER OR PACKAGING!!!

\*\*\*ANY ADDITIONS, DELETIONS, OR OMISSIONS MUST BE CORRECTED ON THIS DRAWING AS THIS DRAWING WILL BE CONSIDERED ALL INCLUSIVE\*\*\*



ALL GRAPHICS PROVIDED ARE FOR REFERENCE ONLY. IF CERTAIN DIMENSIONS ARE CRITICAL PLEASE VERIFY THOSE DIMENSIONS WITH YOUR SALESPERSON

DIMENSION TOLERANCE ± 1/4"

## STANDARD FEATURES

- MODEL NUMBER: STPC-CD
- CAPACITY: 4000 LBS
- LEVEL HEIGHT: 24"
- TOP PLATE DIAMETER: Ø48"
- POWER: 115V AC INPUT
- INTERNAL MOTOR/REDUCER/CHAIN DRIVE
- 3-12 R.P.M. VARIABLE SPEED CONTROLLER
- GUARDED FOOT CONTROL
- SIDE SHEET METAL GUARDS
- DURABLE LIQUID PAINT
- YELLOW FINISH ON DECK
- DURABLE LIQUID PAINT
- BLUE FINISH ON FRAME

## SPECIAL FEATURES

NONE

**APPROVAL**

I, THE UNDERSIGNED, AGREE THAT THE PRODUCT AS REPRESENTED SATISFIES DESIGN AND DIMENSION REQUIREMENTS. I ALSO ACKNOWLEDGE MY DUTY TO CONFIRM PRODUCT AND INSTALLATION COMPLIANCE WITH ALL APPLICABLE FEDERAL, STATE AND LOCAL REGULATIONS AND STANDARDS.

**UNITS REQUIRING APPROVAL DRAWINGS OR MODIFIED ARE NON-RETURNABLE**

[ ] As drawn      [ ] As marked

Signed: \_\_\_\_\_ Date: \_\_\_\_\_

Printed Name: \_\_\_\_\_

*LEAD TIME WILL START UPON RECEIPT OF SIGNED APPROVAL DRAWING*

|                             |               |            |
|-----------------------------|---------------|------------|
| DISTRIBUTOR'S NAME:         |               | P.O.#      |
| <b>VESTIL MANUFACTURING</b> |               | X          |
|                             |               | W.O.#      |
| DRAWN BY: MTS               | DATE: 7/17/13 | X          |
| REFERENCE: X                | SCALE: 1:18   | FILE NAME: |
| QUOTED LEAD TIME: X         | QUOTE # X     | 20-007-132 |