

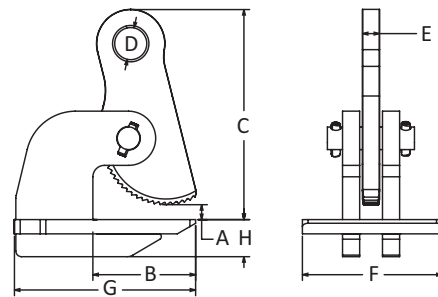
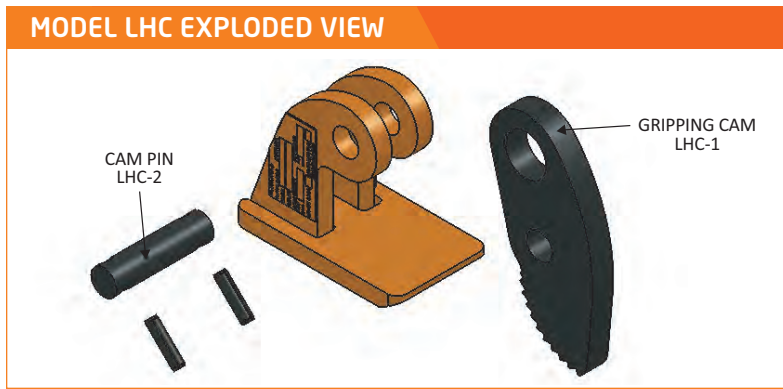
Model LHC

Non-Locking Type






The Model LHC is a horizontal lifting clamp intended to be used in pairs, sets of pairs or in a tripod arrangement for transporting steel plates horizontally. The clamp is designed to lift individual sheets horizontally. Cam operations ensure a tight grip on the load. Serrated gripping cam bites into load for positive grip. Clamps rest in position on edge of plate until tension is applied to the load sling. Clamps must be used in single pairs (2), double pairs (4), or tripod (3) configuration with a lifting sling.



Low-maintenance, fewer components. Gripping cam does not activate until you begin the lift.



MODEL LHC SPECIFICATIONS (in inches)

Part Number	Plate Thickness A	B	C	D	E	F	G	H	Weight (lbs.)	
1/4 Tons Capacity										
 LHC-00.25-A	0-1	2-3/8	5	1	1/2	2-1/4	4	3/8	3	
1/2 Tons Capacity										
 LHC-00.50-A	0-2	4-3/8	9-1/4	1-3/8	1/2	4-7/8	7-3/4	5/8	14	
3/4 Tons Capacity										
 LHC-00.75-A	0-2	4-3/8	9-1/4	1-13/32	3/4	5-3/8	7-3/4	3/4	19	
1-1/2 Tons Capacity										
 LHC-01.50-A	0-2	4-9/16	9-1/4	1-13/32	3/4	6-1/8	7-15/16	1	26	
3 Tons Capacity										
 LHC-03.00-A	0-2	4-1/2	9-1/4	1-13/32	3/4	6-1/8	7-15/16	1-5/8	24	
4 Tons Capacity										
LHC-04.00-A	0-3	7	12-5/16	1-13/32	1	6-1/2	10-3/8	2-3/16	48	

Consult factory for possible larger capacities. SPECIFICATIONS ARE SUBJECT TO CHANGE WITHOUT NOTICE.

Ask us about the Model LHD

Like the Model LHC, the Model LHD is a horizontal lifting clamp intended to be used in pairs, sets of pairs, or in a tripod arrangement, but is available with smooth, bronze or stainless steel surfaces to prevent marring when handling polished metals such as stainless steel, copper, aluminum, etc.

Call 800.628.4263 to learn more.

