

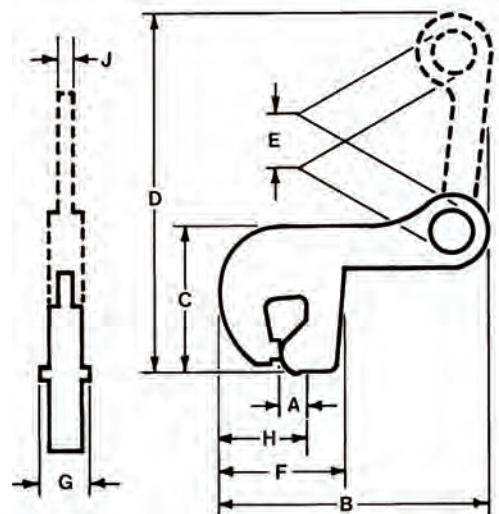
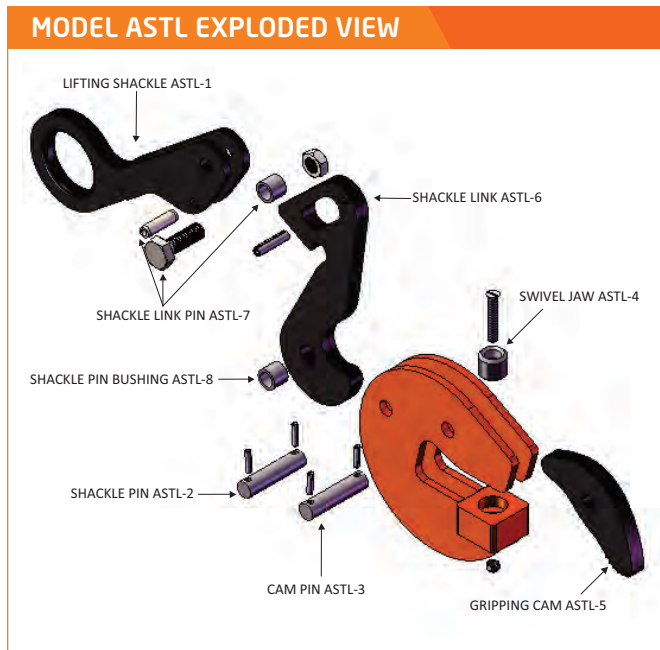
Model ASTL

Non-Locking Type

Both the **Model AST** and **ASTL** were developed primarily for lifting, turning and stacking lightweight beams and structural shapes while a constant tension is applied to the lifting shackle. The horizontal shackle permits a beam to be lifted with the web in a near horizontal position by placing the clamp on the load with the shackle positioned over the web, and between the flanges. With a beam lying in a horizontal position, and the clamp placed with the shackle overhanging the flange, the beam can be lifted, turned 90°, and raised in a vertical position.

The Model ASTL includes all of the feature of the Model AST plus a linkage which permits the tool to be removed remotely by setting the load down with the sling slack, then lifting the crane hook.

Design allows the clamp to be removed remotely.



MODEL ASTL SPECIFICATIONS (in inches)

Part Number	Plate Thickness A	Max. B	C	D	E	F	G	H	J	Weight (lbs.)
1/2 Tons Capacity										
ASTL-00.50-A	0 – 3/4	10-3/4	6-11/16	14	1-3/4	6-3/16	1-3/4	2-1/2	1/2	10
1-1/2 Tons Capacity										
ASTL-01.50-A	0 – 3/4	13	8-1/2	18-1/2	2-1/2	7	2-9/16	4-1/2	5/8	24
3 Tons Capacity										
ASTL-03.00-A	0 – 1-1/2	19-1/4	12-1/2	25	3-3/4	11-3/16	3-3/8	4-5/8	3/4	63

Consult factory for possible larger capacities. SPECIFICATIONS ARE SUBJECT TO CHANGE WITHOUT NOTICE.

IN STOCK