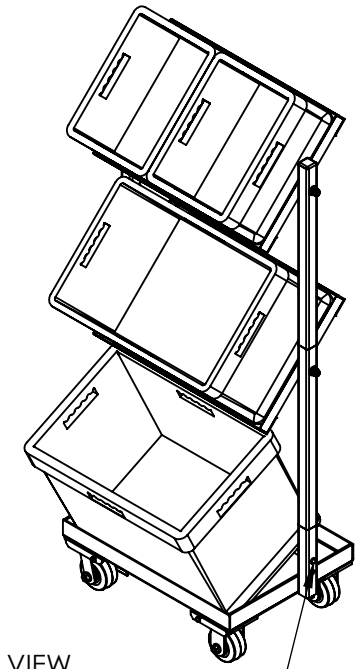
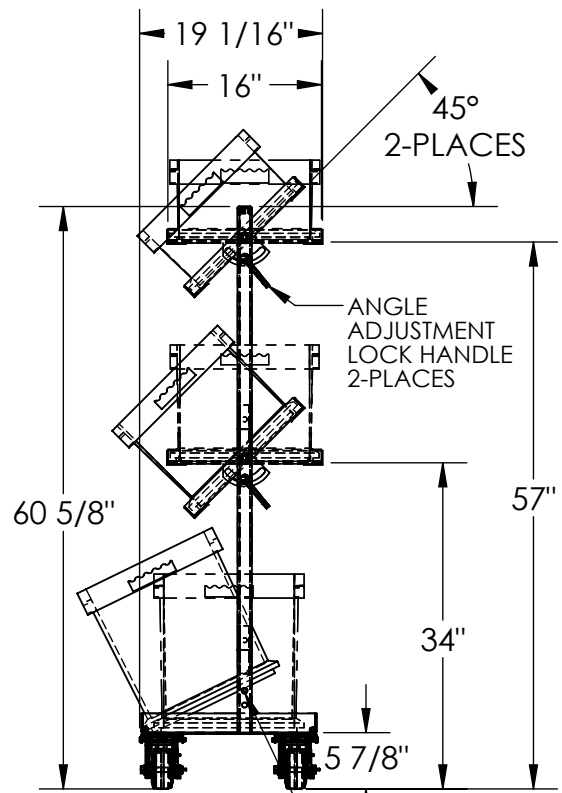
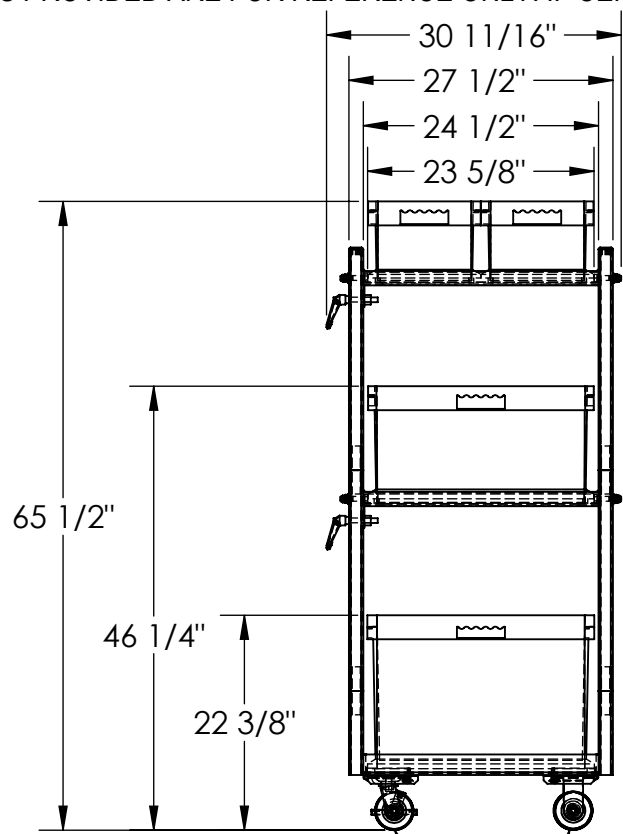


# MULTI-TIER STOCK CART - TSCT-3B

APPROX WEIGHT: 89.72 lbs.  
DOES NOT INCLUDE WEIGHT OF POWER OR PACKAGING!!!

\*\*\* ANY ADDITIONS, DELETIONS, OR OMISSIONS MUST BE CORRECTED ON THIS DRAWING AS THIS DRAWING WILL BE CONSIDERED ALL INCLUSIVE \*\*\*  
ALL GRAPHICS PROVIDED ARE FOR REFERENCE ONLY. IF CERTAIN DIMENSIONS ARE CRITICAL PLEASE VERIFY THOSE DIMENSIONS WITH YOUR SALESPERSON



3-D VIEW SHOWN WITH LOWER PINS INSTALLED  
DIMENSION TOLERANCE ± 1/4"

## STANDARD FEATURES

- MODEL NUMBER IS TSCT-3B
- OVERALL HEIGHT: 65 1/2"
- OVERALL WIDTH: 30 11/16"
- OVERALL DEPTH: 19 1/16"
- UPRIGHT TO UPRIGHT WIDTH: 24 1/2"
- USABLE SHELF SIZE: 16" X 23 5/8"
- UNIFORM STATIC CAPACITY: 300 LBS
- CAPACITY PER SHELF: 100 LBS (MUST BE LOADED BOTTOM UP)
- SHELF TILT: 45°
- INCLUDES (2) 4" x 2" RIGID CASTERS & (2) 4" x 2" SWIVEL W/BRAKE CASTERS
- INCLUDES (1) 15 1/2" X 23 1/2" X 16 1/2" BIN AND (1) 15 1/2" X 23 1/2" X 12 1/2" BIN AND (2) 11 1/2" X 15 1/2" X 8 1/2" BINS
- TOUGH BAKED IN POWDER COATED BLUE FINISH

## SPECIAL FEATURES

NONE

PINS PROVIDED MAY BE INSERTED INTO THE HOLES TO SUPPORT THE BOTTOM OF THE LOWER BIN AND TILT IT FORWARD. FOR A LEVEL LOWER BIN PINS MAY BE STORED IN THE BASE FRAME

Ø4" X 2" MOLD-ON-RUBBER CASTERS QTY. 2 - RIGID

**APPROVAL**

I, THE UNDERSIGNED, AGREE THAT THE PRODUCT AS REPRESENTED SATISFIES DESIGN AND DIMENSION REQUIREMENTS. I ALSO ACKNOWLEDGE MY DUTY TO CONFIRM PRODUCT AND INSTALLATION COMPLIANCE WITH ALL APPLICABLE FEDERAL, STATE AND LOCAL REGULATIONS AND STANDARDS.

**UNITS REQUIRING APPROVAL DRAWINGS OR MODIFIED ARE NON-RETURNABLE**

[ ] As drawn [ ] As marked

Signed: \_\_\_\_\_ Date: \_\_\_\_\_

Printed Name: \_\_\_\_\_

LEAD TIME WILL START UPON RECEIPT OF SIGNED APPROVAL DRAWING

|                      |             |            |
|----------------------|-------------|------------|
| DISTRIBUTOR'S NAME:  |             | P.O.#      |
| VESTIL MANUFACTURING |             | X          |
| DRAWN BY: NWS        |             | W.O.#      |
| DATE: 12/26/2012     |             | X          |
| REFERENCE: X         | SCALE: 1:20 | SALES: X   |
| QUOTED LEAD TIME: X  | QUOTE #     | FILE NAME: |
|                      | X           | 16-007-353 |