

boom position	hook reach	** hook height	* load rating
A-1	36 in [ 914 mm]	42 in [1066 mm]	550 lbs [250 kg]
A-2	46 in [1168 mm]	42 in [1066 mm]	425 lbs [190 kg]
A-3	56 in [1422 mm]	42 in [1066 mm]	350 lbs [160 kg]
A-4	66 in [1676 mm]	42 in [1066 mm]	300 lbs [135 kg]
B-1	29 in [ 736 mm]	56 in [1422 mm]	650 lbs [300 kg]
B-2	38 in [ 965 mm]	60 in [1524 mm]	525 lbs [235 kg]
B-3	47 in [1193 mm]	65 in [1651 mm]	425 lbs [190 kg]
B-4	56 in [1422 mm]	69 in [1752 mm]	350 lbs [160 kg]
C-1	22 in [ 558 mm]	64 in [1625 mm]	650 lbs [300 kg]
C-2	29 in [ 736 mm]	71 in [1803 mm]	525 lbs [235 kg]
C-3	36 in [ 914 mm]	78 in [1981 mm]	425 lbs [190 kg]
C-4	43 in [1092 mm]	85 in [2159 mm]	350 lbs [160 kg]

\* Crane maximum load rating. Load rating may decrease as layers of rope wind onto the winch drum. Refer to winch specific information on page 2.

\*\* Height dimensions shown are with 5BP10 pedestal mounting base.

\*\* Subtract 14 in [356 mm] for 5BF10 socket (flush) mounting base.

\*\* Add 6 in [152 mm] for 5BR10 wheel (roll) mounting base.

\*\* Add 15 in [381 mm] for optional 5BE10-15 base extension.

Information is for reference only and subject to change without notice.

Contact factory for non-standard product requirements.

MAST MOMENT	20490 in-lbs	2316 N-m
-------------	--------------	----------

Refer to Thern Crane Overturning Moments & Bolt Reactions (form QA F 68) for suggested bolt sizes and forces for standard Thern mounting bases.

DRAWINGS FOR PRODUCTION APPROVAL. MANUFACTURE WILL NOT BEGIN UNTIL APPROVED DRAWING IS RETURNED TO THERN INC.

COMPANY NAME \_\_\_\_\_  
 PRINT NAME \_\_\_\_\_  
 SIGNATURE \_\_\_\_\_ DATE \_\_\_\_\_

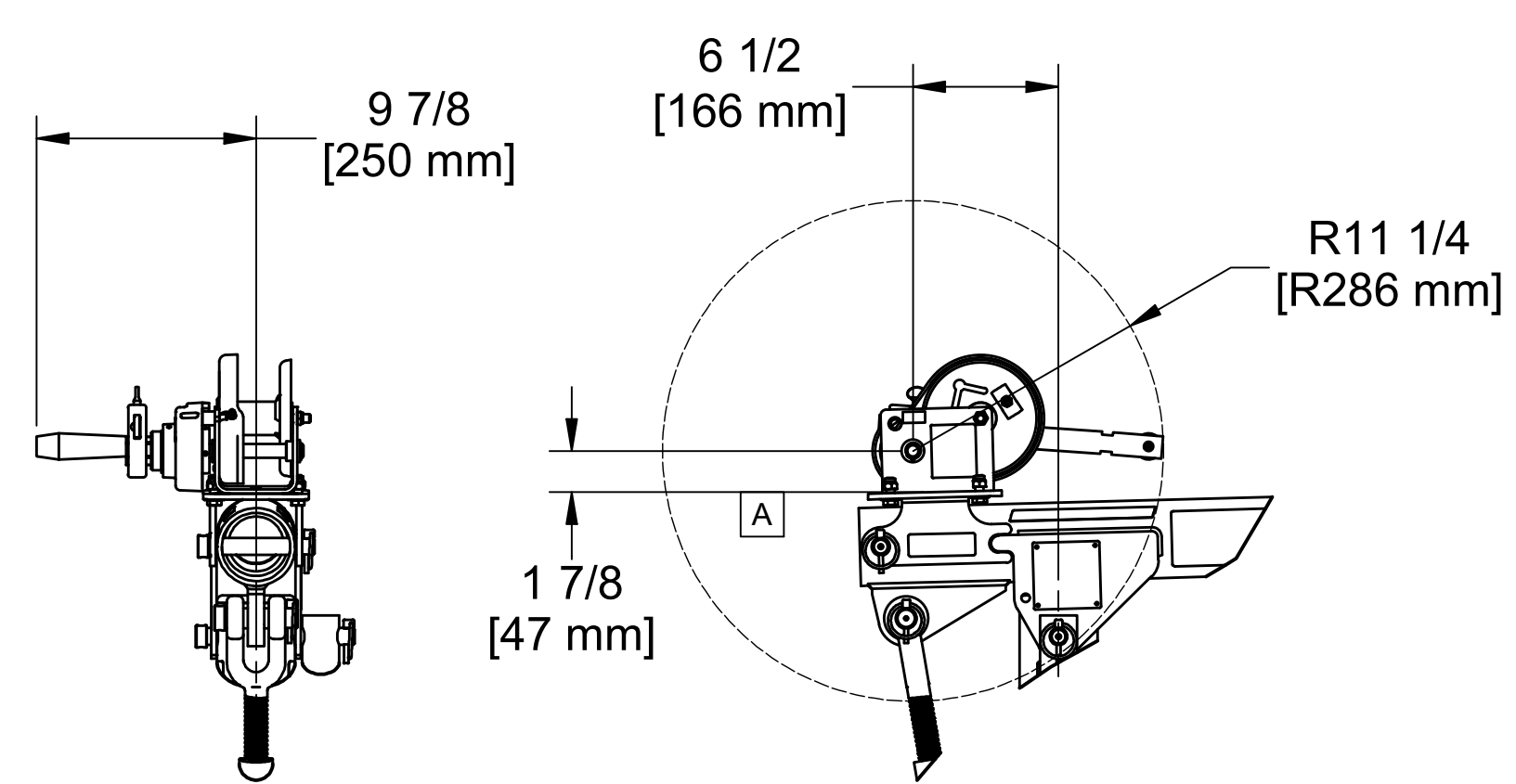
THIS PRINT AND THE INFORMATION HEREIN IS THE PROPERTY OF THERN INC AND MUST NOT BE REPRODUCED EITHER IN FULL OR IN PART WITHOUT WRITTEN APPROVAL BY THERN INC.

MODEL: 5AT1  
 SCALE: 1/6  
 DATE: 1/17/2024  
 DRAWN BY: JCA  
 SHEET SIZE: D  
 PART NO: A34635  
 REVISION: SHIT 1 OF 2

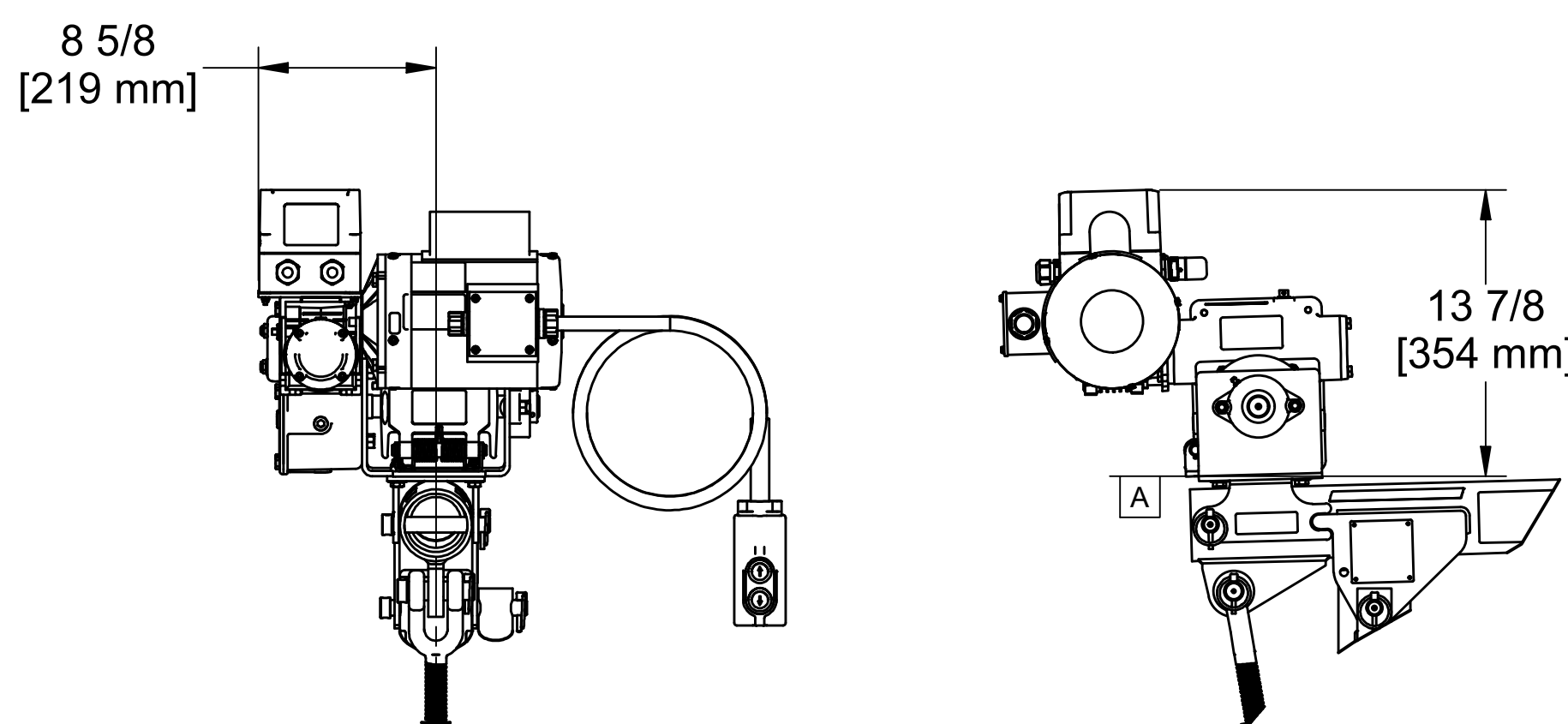
INCH UNITS UNLESS OTHERWISE SPECIFIED. TOLERANCES UNLESS SPECIFIED: FRAC. ± 1" ANGLE ± 9'

Thern Winches & Cranes  
 5712 INDUSTRIAL PARK ROAD  
 WINONA, MN 55987  
 PHONE 1-507-454-2996  
 WWW.THERN.COM

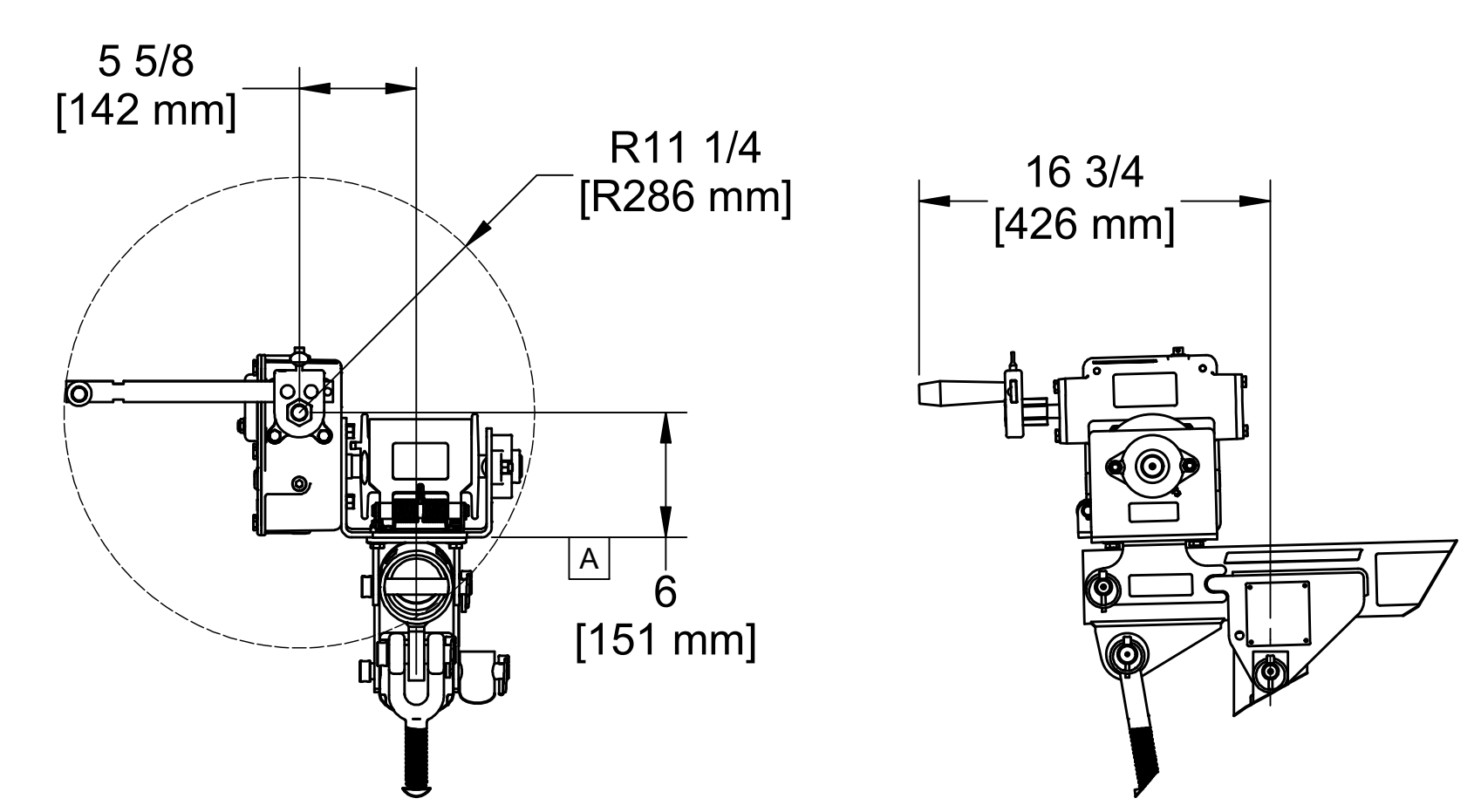
8 7 6 5 4 3 2 1



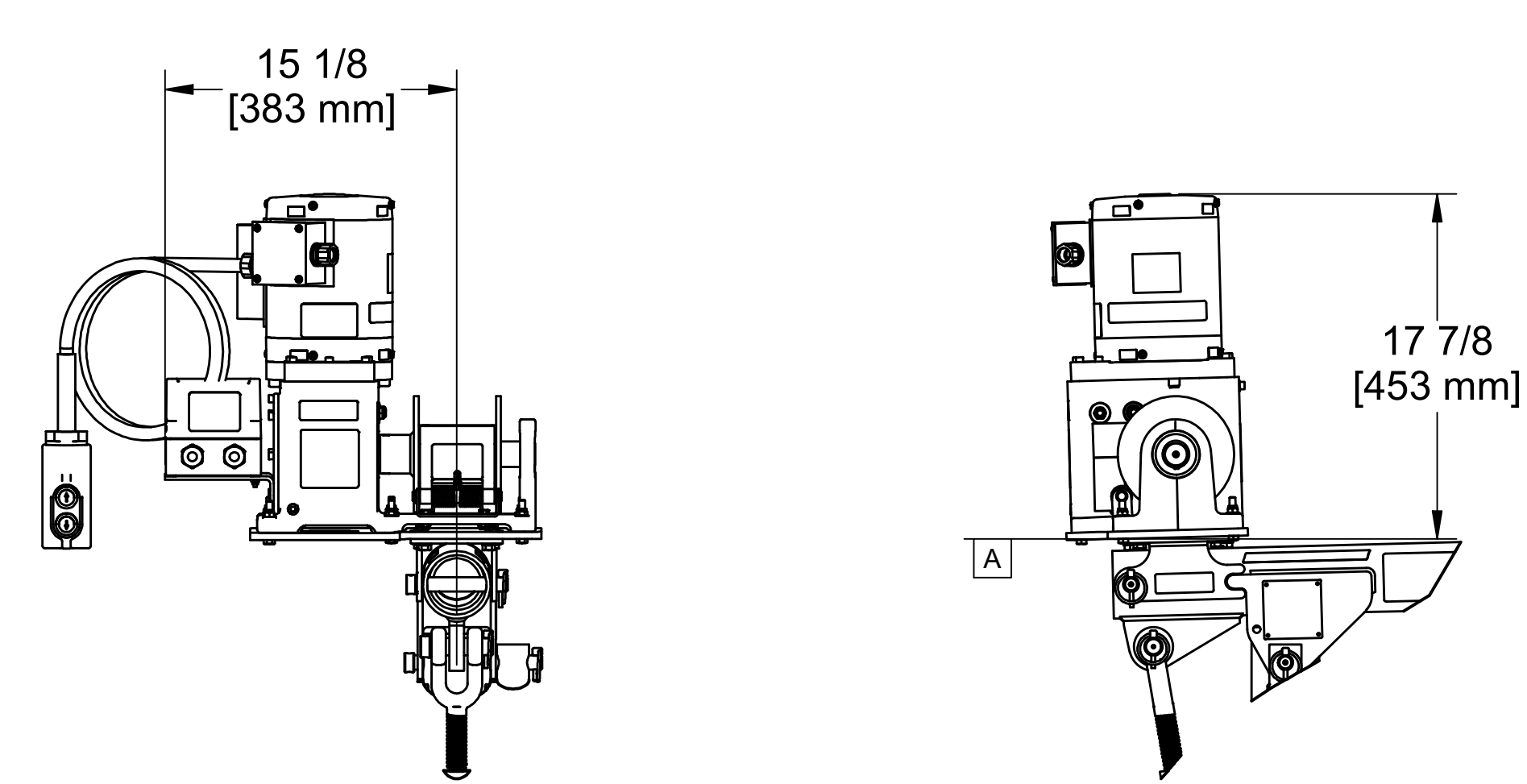
5AT1-M1



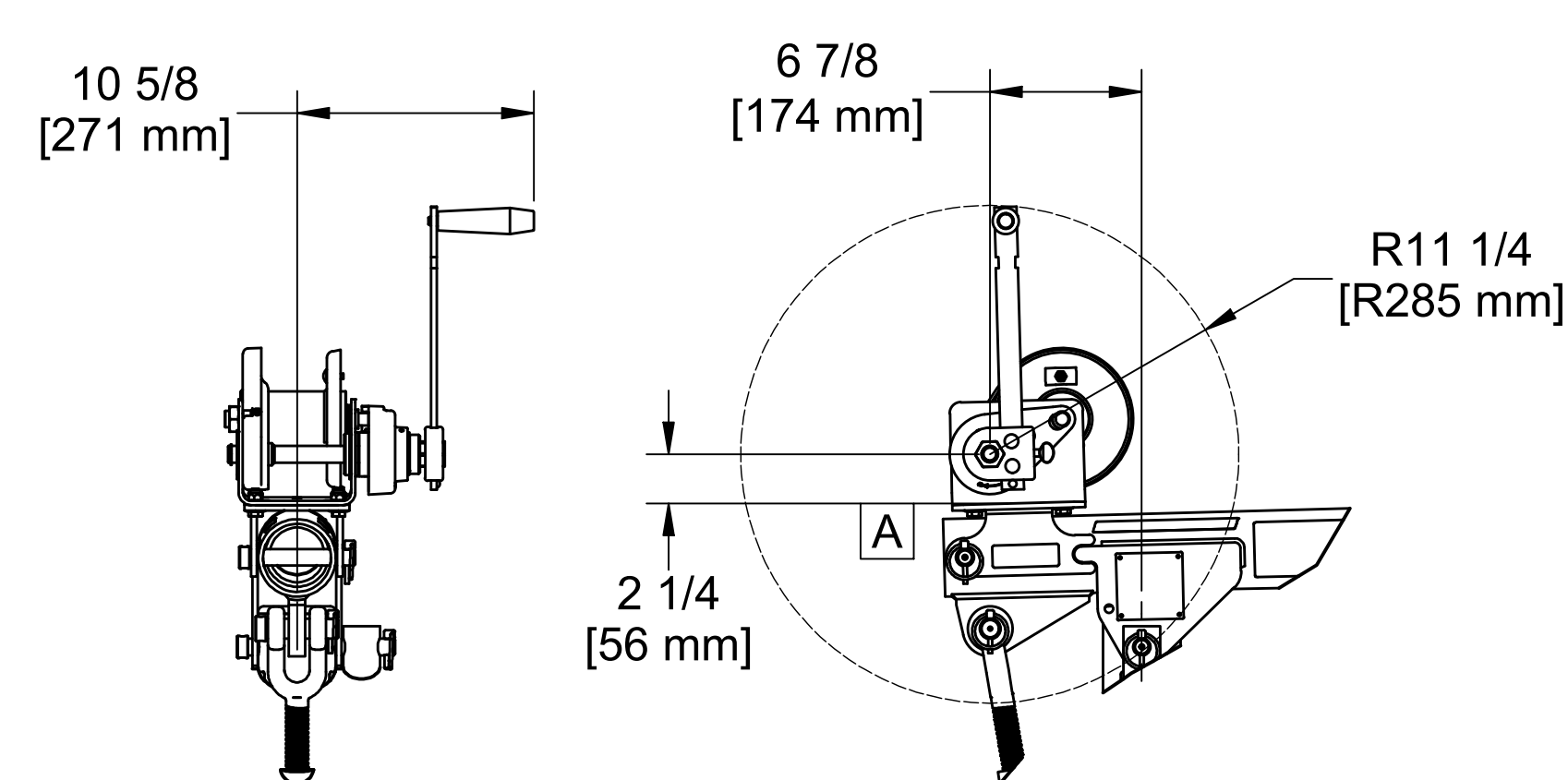
5AT1-E2(L)



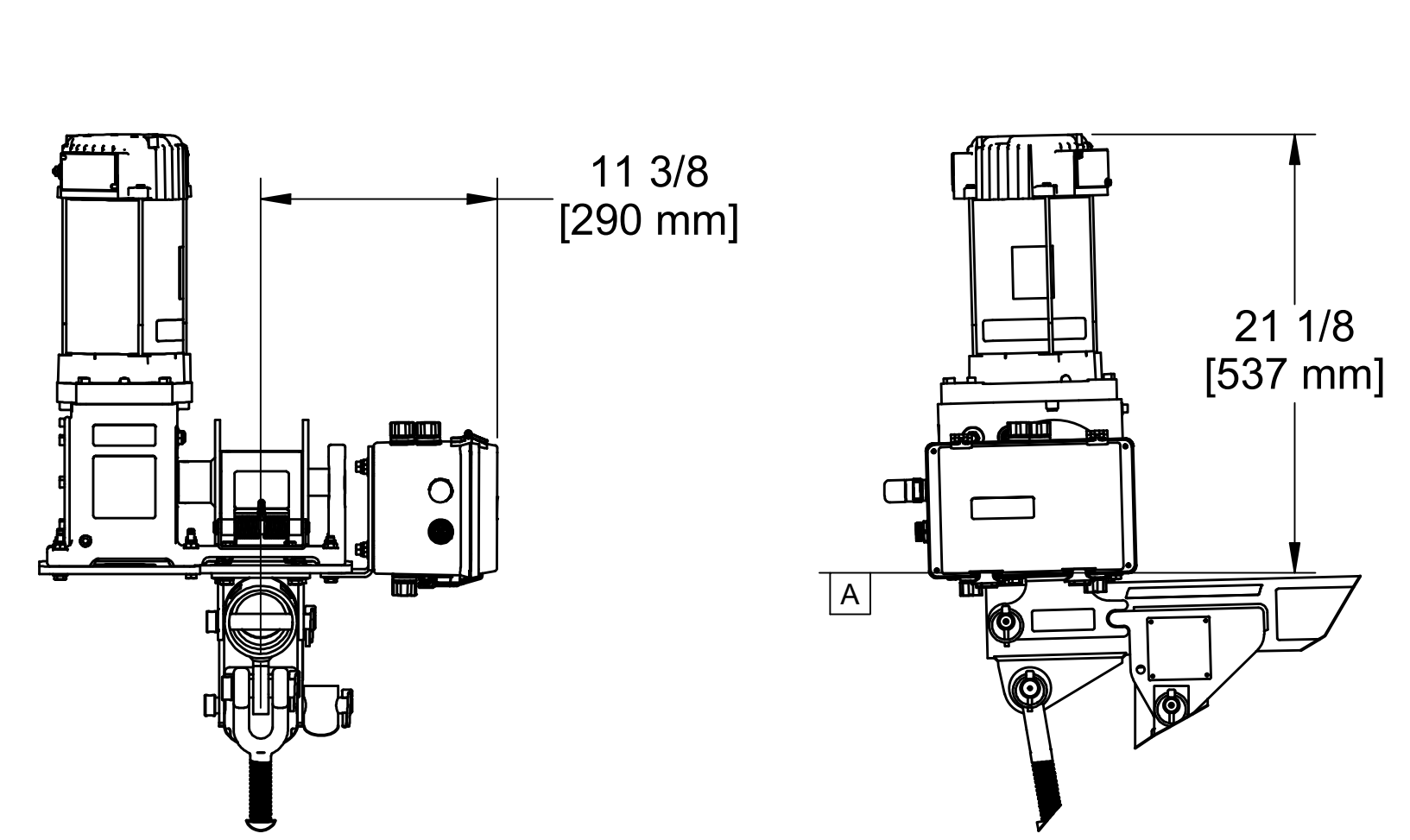
5AT1-M2



5AT1-E4(L)



5AT1-M3



5AT1-E4DC(L)

	M1	M2	M3				
Manual Winch Model	M4022PB	4WM2-K	M4042PBSS				
Gear Ratio	2.85 : 1	32 : 1	3.83 : 1				
Drill Driveable (400 rpm max)	NO	YES	NO				
Crane Weight	lbs (kg)	70 (32)	91 (42)	78 (36)			
* Load Rating - 1st layer	lbs (kg)	650 (300)	650 (300)	650 (300)			
* Load Rating - mid drum	lbs (kg)	650 (300)	650 (300)	650 (300)			
* Load Rating - full drum	lbs (kg)	500 (225)	650 (300)	600 (270)			
Rope Diameters	3/16"	-	-	1/4"	3/16"	1/4"	
Rope Capacity - full drum	ft (m)	57 (17.3)	-	-	77 (23.4)	110 (33.5)	59 (17.9)

	E2(L)	E4(L)	E4DC(L)				
Power Winch Model	4WP2-K(L)	4777-K(L)	4777DC-K(L)				
Gear Ratio	160 : 1	119 : 1	119 : 1				
Motor Horsepower	hp	1.3	1.3	1.0			
Crane Weight	lbs (kg)	127 (58)	149 (68)	173 (79)			
* Load Rating - 1st layer	lbs (kg)	650 (300)	650 (300)	650 (300)			
* Load Rating - mid drum	lbs (kg)	650 (300)	650 (300)	650 (300)			
* Load Rating - full drum	lbs (kg)	650 (300)	650 (300)	650 (300)			
Line Speed - 1st layer	fpm (mpm)	8 (2.4)	13 (4.0)	13 (4.0)			
Line Speed - mid drum	fpm (mpm)	11 (3.4)	17 (5.2)	17 (5.2)			
Line Speed - full drum	fpm (mpm)	13 (4.0)	22 (6.7)	22 (6.7)			
Rope Diameters	-	1/4"	3/16"	1/4"	3/16"	1/4"	
Rope Capacity - full drum	ft (m)	-	77 (23.4)	156 (47.5)	89 (27.1)	156 (47.5)	89 (27.1)

\* Maximum. Crane Load Rating will also vary with boom position.

DRAWINGS FOR PRODUCTION APPROVAL. MANUFACTURE WILL NOT BEGIN UNTIL APPROVED DRAWING IS RETURNED TO THERN INC.

COMPANY NAME \_\_\_\_\_  
 PRINT NAME \_\_\_\_\_  
 SIGNATURE \_\_\_\_\_ DATE \_\_\_\_\_

THIS PRINT AND THE INFORMATION HEREIN IS THE PROPERTY OF THERN INC AND MUST NOT BE REPRODUCED EITHER IN FULL OR IN PART WITHOUT WRITTEN APPROVAL BY THERN INC.

MODEL: 5AT1

SCALE: 1/8

DATE: 1/17/2024

DRAWN BY: JCA

DESCRIPTION: DIMENSIONAL DRAWING

SHEET: 2 OF 2

WEIGHT: D

REV: 1

THORN Winches & Cranes

5712 INDUSTRIAL PARK ROAD  
 WINONA, MN 55987  
 PHONE 1-507-454-2986  
 WWW.THERN.COM

8 7 6 5 4 3 2 1