



Corporate Headquarters
 5712 Industrial Park Road
 PO Box 347
 Winona, MN 55987 USA

phone 507-454-2996
facsimile 507-454-5282
email info@thern.com
web www.thern.com

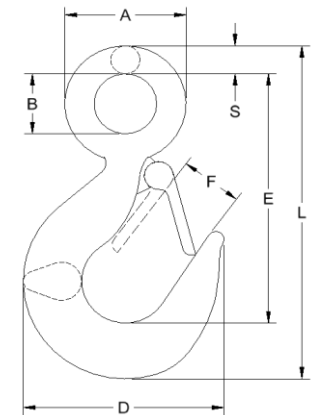
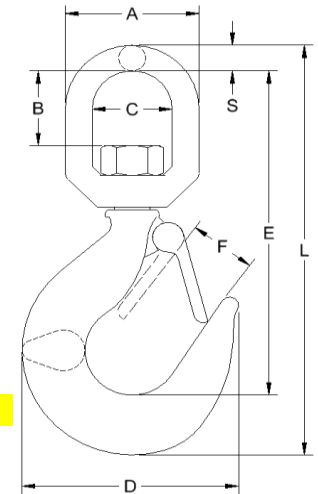
Thern Europe
 Bedrijvenpark Twente 454e
 7602 KM Almelo
 The Netherlands

phone +31 548 659052
facsimile +31 548 659010
email europe@therneurope.eu
web www.therneurope.eu

Document: QA F 95
 Page No: 01 of 01
 Revision: 05/31/2019
 Effective: 05/31/2019
 Author: J. Anderson
 Approved: J. Wilkowski

Standard Hook Dimensions & Ratings

This information is for reference only and may change without notice.



Swivel Hook													
Part Number	Mfg. Number	Description	Dimension (inches)								Load Rating		Used With Rope Sizes
			A	B	C	D	E	F	L	S	lbs	(kg)	
A8144	SO455-0120	HOOK SWIVEL .50T W/LATCH 316 SST	1.78	1.10	1.10	2.75	4.25	0.69	5.54	0.34	1430	(648)	1/8", 3/16"
A8146	SO455-0150	HOOK SWIVEL 1.0T W/LATCH 316 SST	1.86	1.10	1.10	3.28	4.80	0.84	6.31	0.38	2200	(997)	1/4"
A9066	SO455-0200	HOOK SWIVEL 1.5T W/LATCH 316 SST	2.41	1.30	1.41	4.38	5.80	1.28	7.80	0.50	3300	(1496)	5/16", 3/8"
A4689	21905 1	HOOK SWIVEL .75T W/LATCH CARB STL	2.00	0.88	1.25	2.88	4.41	0.78	5.63	0.38	1500	(680)	1/8", 3/16"
A6480	21910 5	HOOK SWIVEL 1.0T W/LATCH CARB STL	2.50	1.25	1.50	3.19	5.28	0.76	6.63	0.50	2000	(907)	1/4"
A6478	1048621	HOOK SWIVEL 1.5T W/LATCH CARB STL	3.00	1.50	1.75	3.59	6.03	1.00	7.75	0.63	3000	(1360)	5/16", 3/8"

Eye Hook													
Part Number	Mfg. Number	Description	Dimension (inches)								Load Rating		Used With Rope Sizes
			A	B	-	D	E	F	L	S	lbs	(kg)	
A8970	S0454-0007	HOOK EYE .50T W/LATCH 316 SST	1.07	0.51	-	2.63	2.53	0.58	3.64	0.28	1000	(453)	1/8", 3/16"
B1839	S0454-0010	HOOK EYE 1.0T W/LATCH 316 SST	1.55	0.73	-	3.50	3.25	0.91	4.84	0.44	2000	(907)	1/4"
A8052	S0454-0013	HOOK EYE 1.5T W/LATCH 316 SST	1.94	0.94	-	4.91	4.25	1.28	6.31	0.50	3000	(1360)	5/16", 3/8"
A7696	22655 4	HOOK EYE .75T W/LATCH CARB STL	1.50	0.75	-	2.88	3.18	0.76	4.38	0.38	1500	(680)	1/8", 3/16"
B1891	22660 8	HOOK EYE 1.0T W/LATCH CARB STL	1.82	0.94	-	3.19	3.38	0.97	4.65	0.44	2000	(907)	1/4"
A5164	22665 3	HOOK EYE 1.5T W/LATCH CARB STL	2.00	1.00	-	3.47	4.00	0.84	5.41	0.50	3000	(1360)	5/16", 3/8"

