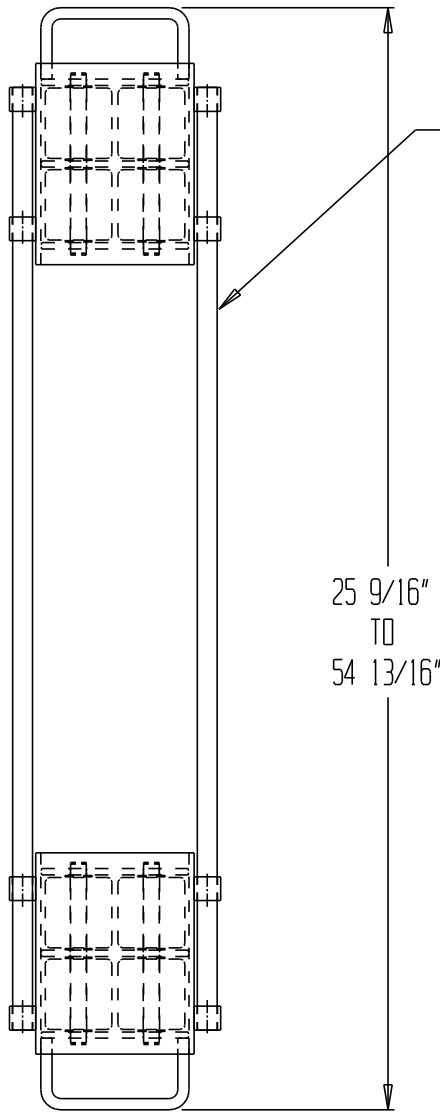


# ADJUSTABLE MACHINERY SKATE - ASKT-6

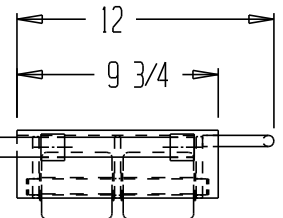
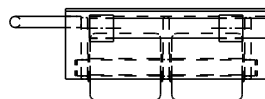
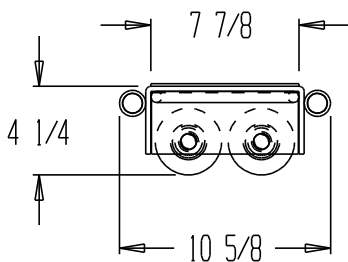


## STANDARD FEATURES

MODEL NUMBER: ASKT-6  
 CAPACITY: 12,000 LBS  
 INDIVIDUAL SKATE DIMENSIONS:  
 12 13/16" x 10 1/2" x 4 3/8"  
 8 NYLON ROLLERS (4 PER SKATE)

## SPECIAL FEATURES

NONE



DIM TOLERANCE. +/- 1/4"

PRODUCTION WILL START UPON  
 RECEIPT OF SIGNED APPROVAL  
 DRAWING

FOR INTERNAL USE ONLY PROJECT SIGN OFF	
SALES	
ENG	
FAB.	
POWER	

**A  
P  
P  
R  
O  
V  
A  
L**

I, THE UNDERSIGNED, AGREE THAT THE PRODUCT AS REPRESENTED SATISFIES DESIGN & DIMENSION REQUIREMENTS. I ALSO ACKNOWLEDGE MY DUTY TO CONFIRM PRODUCT & INSTALLATION COMPLIANCE WITH ALL APPLICABLE FEDERAL, STATE AND LOCAL REGULATIONS & STANDARDS.

**ANY MODIFIED UNITS ARE NON-RETURNABLE**

[ ] As drawn [ ] As marked

Signed: \_\_\_\_\_ Date: \_\_\_\_\_

Printed Name: \_\_\_\_\_

LEAD TIME WILL START UPON RECEIPT OF SIGNED APPROVAL DRAWING

\*\*SPECIAL UNITS ARE NON-RETURNABLE  
 \*AVAILABLE AT ADDITIONAL COSTS

DISTRIBUTOR'S NAME: <b>VESTIL MFG</b>		P.O.#: -
DRAWN BY: KY		W.O.#: -
DATE: 9/13/04	SALES: -	
REFERENCE: -	SCALE: -	DRWG./FILE NAME:
QUOTED LEADTIME: -	QUOTE #: -	33-007-126