

ChainSafe

ChainSafe is a Bluetooth wireless tension load cell capable of load monitoring of capacities up to 4te. Specifically designed for use along the length of the chain with an array of The Crosby Group chain fittings for applications where chain slings, chain lashing and tie downs are used in industries such as transportation.

The ChainSafe design has an unrivalled strength to weight ratio with a completely sealed stainless steel enclosure providing IP67 or NEMA6 environmental protection, making this industry-leading dynamometer even more suitable for use in the harshest environments.

The versatile chain load monitoring device has an update rate of 1Hz and the Bluetooth signal effortlessly connects to any iOS or Android smartphone that has our free HHP app installed. This will provide the operator with a wireless range of up to 328ft or 100m – measuring the load from a safe distance. The app will also allow the operator to log data versus time or on events such as over or underload, and the adjustable alarm will alert the operator on their smartphone if any overload is occurring.

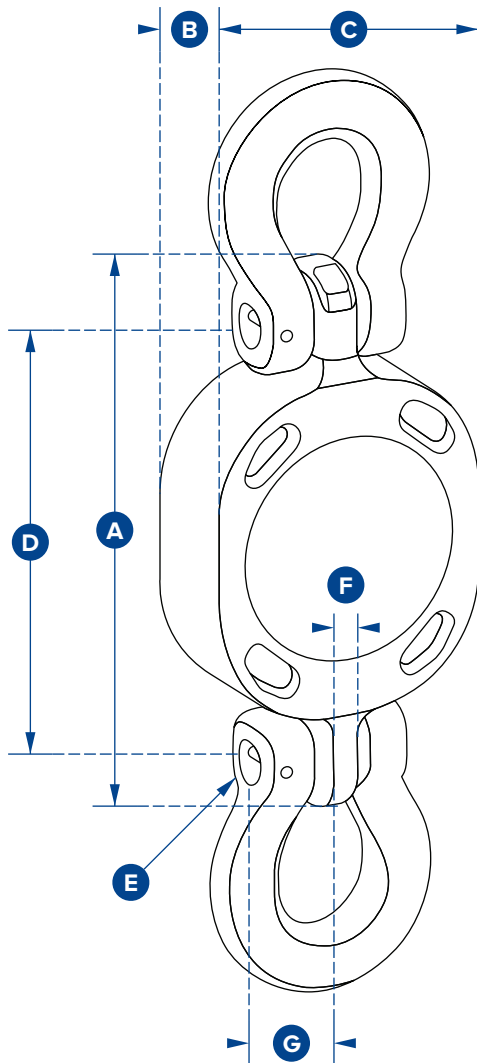
Illustration - fitted with Crosby S-1311 Chain Shortener Links



Features and benefits:

- Designed to work along the length of 10mm chain
- Bluetooth wireless range of 100m/328ft
- Lightweight load cell easily attached to the length of chain
- No battery change required - Battery life 5 years based on 4hrs use per day
- Environmentally protected to IP67/NEMA6
- Internal Antennae.
- Conforms to EN1677:2008
- Fatigue tested to 30,000 cycles to 1.5x WLL.

N.B. Fittings not included



| Part Numbers | |
|----------------------|--|
| SP | CS4T-CROSBY |
| Crosby | 7789536 |
| Capacity | 4te 8800lb |
| Resolution | 0.002te 4lb |
| Units | tonne lb |
| Weight | 2.5kg 5.5lb |
| Safety Factor | 4:1 |
| Battery Type | Lithium Thionyl Chloride (non-replaceable) |
| Battery Life | 5 years based on 4hrs use per day |
| Operating Temp | -10°C to +50°C or 14°F to 122°F |
| Accuracy | ±0.2% of full scale |
| System Range | 100 metres or 328 feet |
| Data Rate | 1Hz |
| Protection | IP67 or NEMA6 |
| Dimension A | 164 6.46" |
| Dimension B | 35 1.38" |
| Dimension C | 85 3.35" |
| Dimension D | 132 5.20" |
| Dimension ØE | 13.2 0.52" |
| Dimension F | 11 0.43" |
| Dimension G | 28 1.10" |
| Recommended Fittings | 10mm or 3/8" G100 Chain Fittings |

Grab Hooks:



Chain shortener:



Links:



Lashing:



Links:



Connectors:

