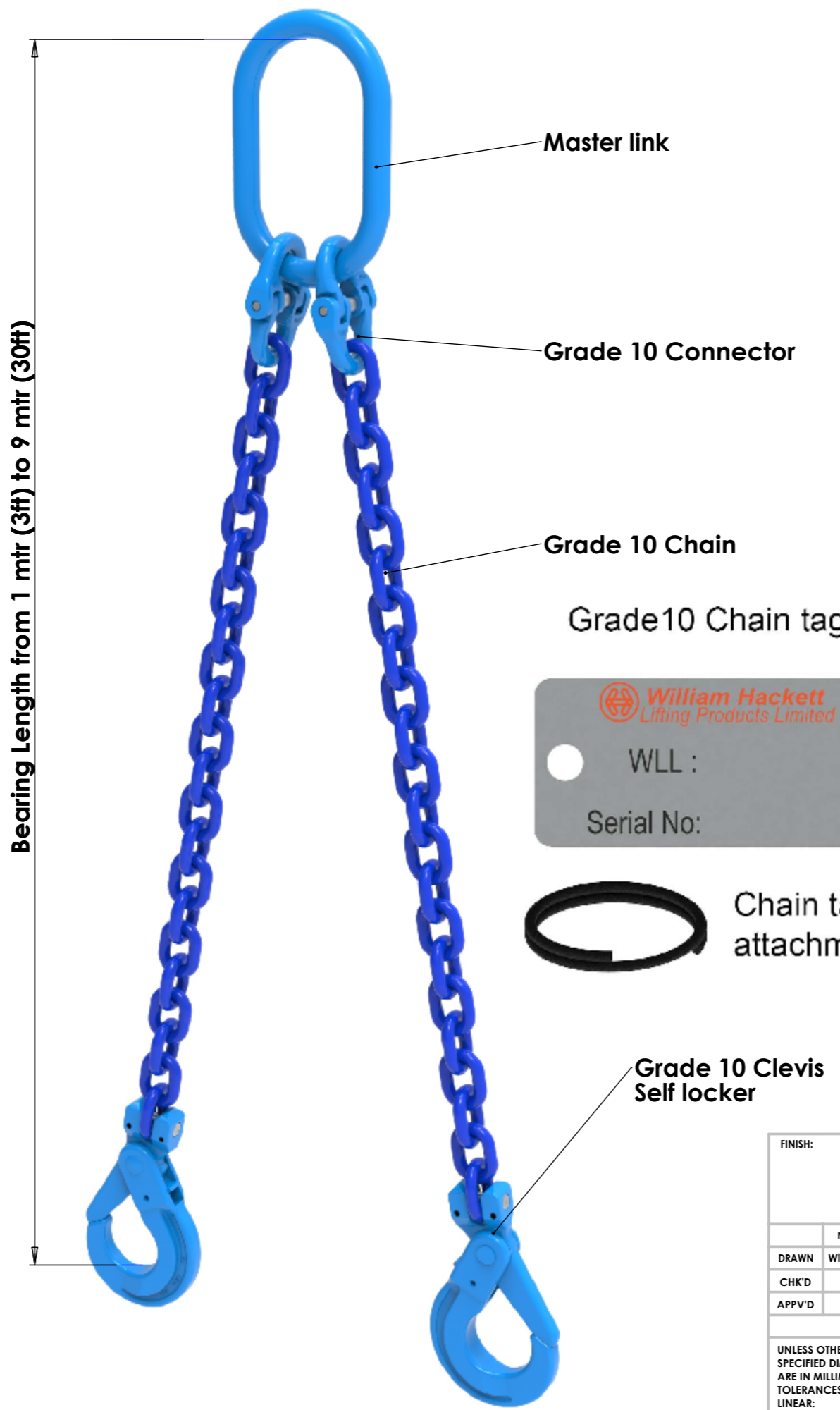




| | |
|--|-----|
| 6mm (1/4") Grade 10 Double Leg Chain Sling, Master Link one end , Self locking hook the other | |
| WLL 2.0 t (WLL 3800lbs) | |
| Description | QTY |
| Master link | 1 |
| Connector | 2 |
| Grade 10 chain to suit bearing length | 2 |
| Clevis self locking hook | 2 |
| 8mm (5/16") Grade 10 Double Leg Chain Sling, Master Link one end , Self locking hook the other | |
| WLL 3.5 t (WLL 8100lbs) | |
| Description | QTY |
| Master link | 1 |
| Connector | 2 |
| Grade 10 chain to suit bearing length | 2 |
| Clevis self locking hook | 2 |
| 10mm (3/8") Grade 10 Double Leg Chain Sling, Master Link one end , Self locking hook the other | |
| WLL 5.6 t (WLL 12400 lbs) | |
| Description | QTY |
| Master link | 1 |
| Connector | 2 |
| Grade 10 chain to suit bearing length | 2 |
| Clevis self locking hook | 2 |
| 13mm (1/2") Grade 10 Double Leg Chain Sling, Master Link one end , Self locking hook the other | |
| WLL 9.5 t (WLL 21200lbs) | |
| Description | QTY |
| Master link | 1 |
| Connector | 2 |
| Grade 10 chain to suit bearing length | 2 |
| Clevis self locking hook | 2 |
| 16mm (5/8") Grade 10 Double Leg Chain Sling, Master Link one end , Self locking hook the other | |
| WLL 14 t (WLL 32000 lbs) | |
| Description | QTY |
| Master link | 1 |
| Connector | 2 |
| Grade 10 chain to suit bearing length | 2 |
| Clevis self locking hook | 2 |



Grade 10 Alloy Chain Slings comply with the following standards:

ASME B30-09-18 -G10 Sling
ASTM A973/A973M - G10 Sling

Components - BS EN 1677-1
ASTM A952-A952M , ASME B30.26

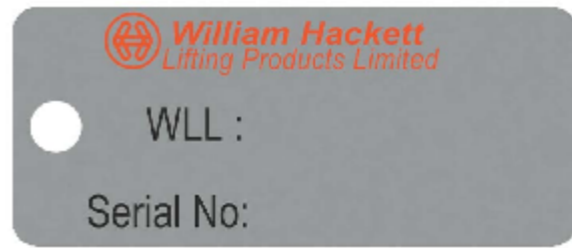
Chain & Components- Proof tested to 2.5 times WLL - This exceeds the ASTM requirements. Assembled sling proof tested to 2 times the WLL.

Chain - Tensile strength following heat treatment meets or exceeds all existing ASTM and OSHA specification requirements.

These products are suitable for lifting operations from -40°C to 200°C. Consult our technical department for operations outside of this range.

Batch marks on all components for traceability.

Declaration of conformity accompanies each sling.



| | | | | | |
|--|-------------|----------------------|------|--|--|
| FINISH: | | DO NOT SCALE DRAWING | | REVISION | |
| | | | | | |
| | NAME | SIGNATURE | DATE | | |
| DRAWN | Will Frater | | | | |
| CHK'D | | | | | |
| APPV'D | | | | | |
| UNLESS OTHERWISE SPECIFIED DIMENSIONS ARE IN MILLIMETERS | | MATERIAL: | | TITLE: Grade 10 Double Leg Chain Sling | |
| TOLERANCES: | | | | A3 | |
| LINEAR: | | | | SCALE:1:1 | |
| ANGULAR: | | WEIGHT: | | SHEET 1 OF 1 | |