

**6mm (1/4") Grade 10 two Leg Chain Sling, Master Link one end , clevis sling hook the other**

WLL 2.0 t (WLL 3800lbs)	
Description	QTY
Master link	1
Connector	2
Grab hook	2
Grade 10 chain to suit bearing length	2
Clevis sling hook	2

**8mm (5/16") Grade 10 two Leg Chain Sling, Master Link one end , clevis sling hook the other**

WLL 3.5 t (WLL 8100lbs)	
Description	QTY
Master link	1
Connector	1
Grab hook	1
Grade 10 chain to suit bearing length	1
Clevis sling hook	1

**10mm (3/8") Grade 10 two Leg Chain Sling, Master Link one end , clevis sling hook the other**

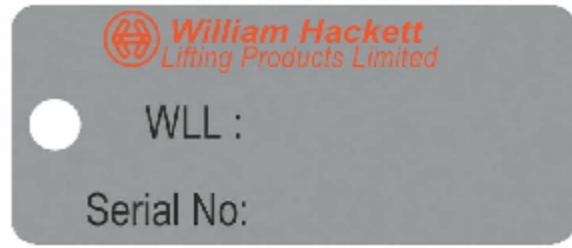
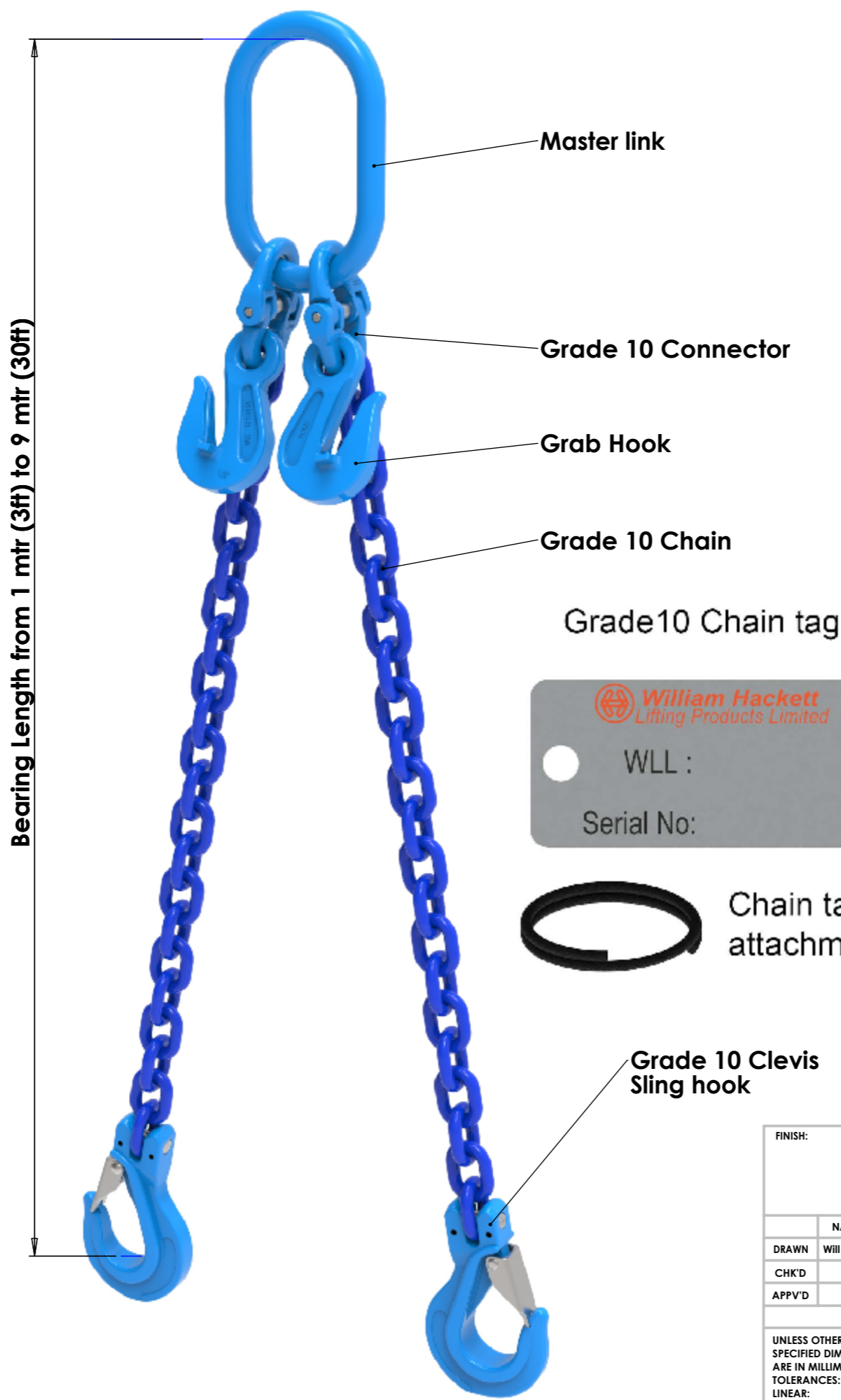
WLL 5.6 t (WLL 12400 lbs)	
Description	QTY
Master link	1
Connector	2
Grab hook	2
Grade 10 chain to suit bearing length	2
Clevis sling hook	2

**13mm (1/2") Grade 10 two Leg Chain Sling, Master Link one end , clevis sling hook the other**

WLL 9.5 t (WLL 21200lbs)	
Description	QTY
Master link	1
Connector	2
Grab hook	2
Grade 10 chain to suit bearing length	2
Clevis sling hook	2

**16mm (5/8") Grade 10 two Leg Chain Sling, Master Link one end , clevis sling hook the other**

WLL 14 t (WLL 32000lbs)	
Description	QTY
Master link	1
Connector	2
Grab hook	2
Grade 10 chain to suit bearing length	2
Clevis sling hook	2



Grade 10 Alloy Chain Slings comply with the following standards:

ASME B30-09-18 -G10 Sling  
ASTM A973/A973M - G10 Sling

Components - BS EN 1677-1  
ASTM A952-A952M , ASME B30.26

Chain & Components- Proof tested to 2.5 times WLL - This exceeds the ASTM requirements. Assembled sling proof tested to 2 times the WLL.

Chain - Tensile strength following heat treatment meets or exceeds all existing ASTM and OSHA specification requirements.

These products are suitable for lifting operations from -40°c to 200°c. Consult our technical department for operations outside of this range.

Batch marks on all components for traceability.

Declaration of conformity accompanies each sling.

FINISH:		DO NOT SCALE DRAWING		REVISION	
DRAWN: Will Frater		SIGNATURE		DATE	
CHK'D:		SIGNATURE		DATE	
APPV'D:		SIGNATURE		DATE	
UNLESS OTHERWISE SPECIFIED DIMENSIONS ARE IN MILLIMETERS TOLERANCES: LINEAR: ANGULAR:		MATERIAL:		TITLE: Grade 10 Double Leg Chain Sling	
WEIGHT:		SCALE:1:1		SHEET 1 OF 1	
				A3	

