

6mm (1/4") Grade 10 Single Leg Chain Sling, Master Link one end , Self locking hook the other

WLL 1.4 t (WLL 2700lbs)

Description	QTY
Master link	1
Connector	1
Grab hook	1
Grade 10 chain to suit bearing length	1
Clevis self locking hook	1

8mm (5/16") Grade 10 Single Leg Chain Sling, Master Link one end , Self locking hook the other

WLL 2.5 t (WLL 5700lbs)

Description	QTY
Master link	1
Connector	1
Grab hook	1
Grade 10 chain to suit bearing length	1
Clevis self locking hook	1

10mm (3/8") Grade 10 Single Leg Chain Sling, Master Link one end , Self locking hook the other

WLL 4 t (WLL 8800 lbs)

Description	QTY
Master link	1
Connector	1
Grab hook	1
Grade 10 chain to suit bearing length	1
Clevis self locking hook	1

13mm (1/2") Grade 10 Single Leg Chain Sling, Master Link one end , Self locking hook the other

WLL 6.7 t (WLL 15000lbs)

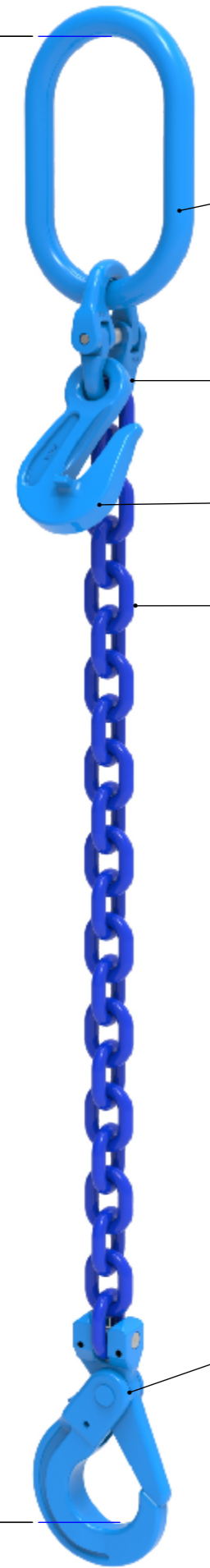
Description	QTY
Master link	1
Connector	1
Grab hook	1
Grade 10 chain to suit bearing length	1
Clevis self locking hook	1

16mm (5/8") Grade 10 Single Leg Chain Sling, Master Link one end , Self locking hook the other

WLL 10 t (WLL 22600lbs)

Description	QTY
Master link	1
Connector	1
Grab hook	1
Grade 10 chain to suit bearing length	1
Clevis self locking hook	1

Bearing length from 1 mtr (3ft) to 9mtr (30ft)



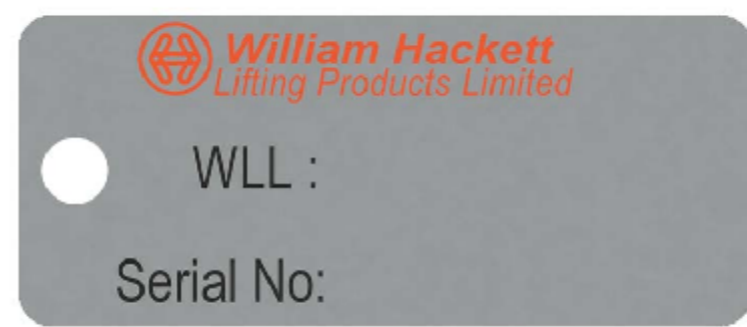
X-003 Master link

X-015 Grade 10 Connector

X-041 Grab Hook

Grade 10 Chain

Grade10 Chain tag



Chain tag attachment loop

Grade 10 Clevis Self locker

Grade 10 Alloy Chain Slings comply with the following standards:

ASME B30-09-18 -G10 Sling  
ASTM A973/A973M - G10 Sling

Components - BS EN 1677-1  
ASTM A952-A952M , ASME B30.26

Chain & Components- Proof tested to 2.5 times WLL - This exceeds the ASTM requirements. Assembled sling proof tested to 2 times the WLL.

Chain - Tensile strength following heat treatment meets or exceeds all existing ASTM and OSHA specification requirements.

These products are suitable for lifting operations from -40°C to 200°C. Consult our technical department for operations outside of this range.

Batch marks on all components for traceability.

Declaration of conformity accompanies each sling.

FINISH:		DO NOT SCALE DRAWING		REVISION
DRAWN: Will Frater		SIGNATURE:	DATE:	
CHK'D:				
APPV'D:				
UNLESS OTHERWISE SPECIFIED DIMENSIONS ARE IN MILLIMETERS TOLERANCES: LINEAR: ANGULAR:		MATERIAL:	TITLE: Grade 10 Single Leg Chain Sling	
		WEIGHT:	SCALE: 1:1	A3 SHEET 1 OF 1