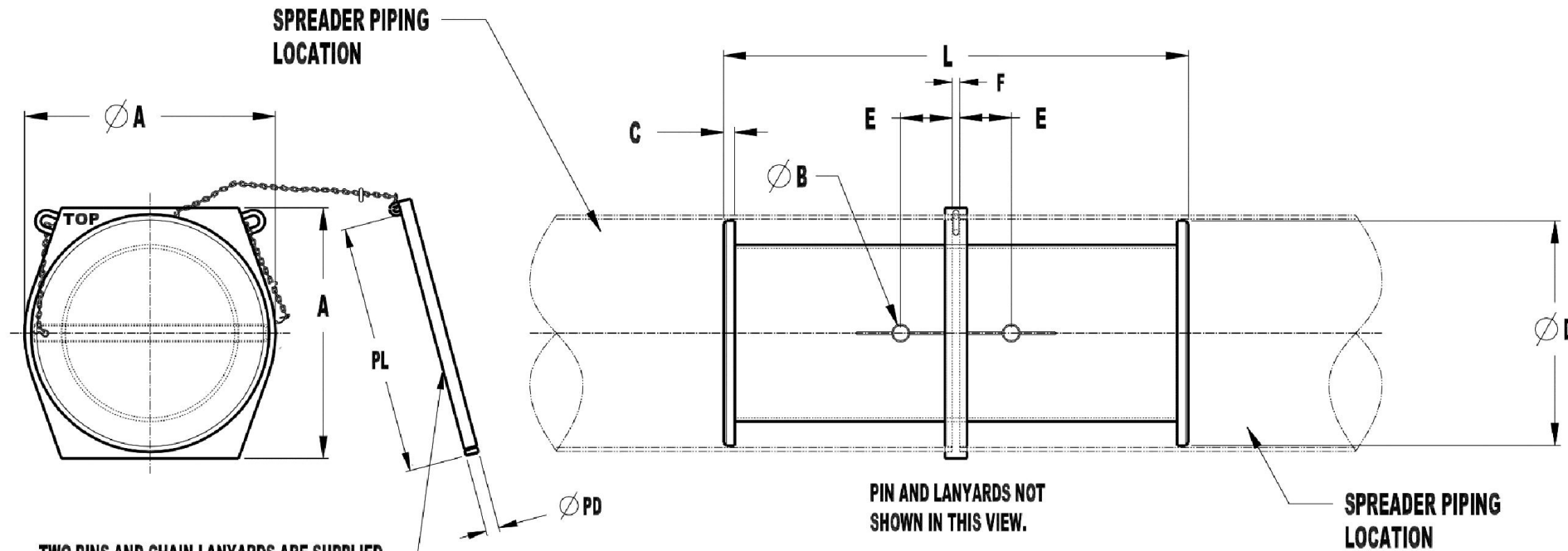
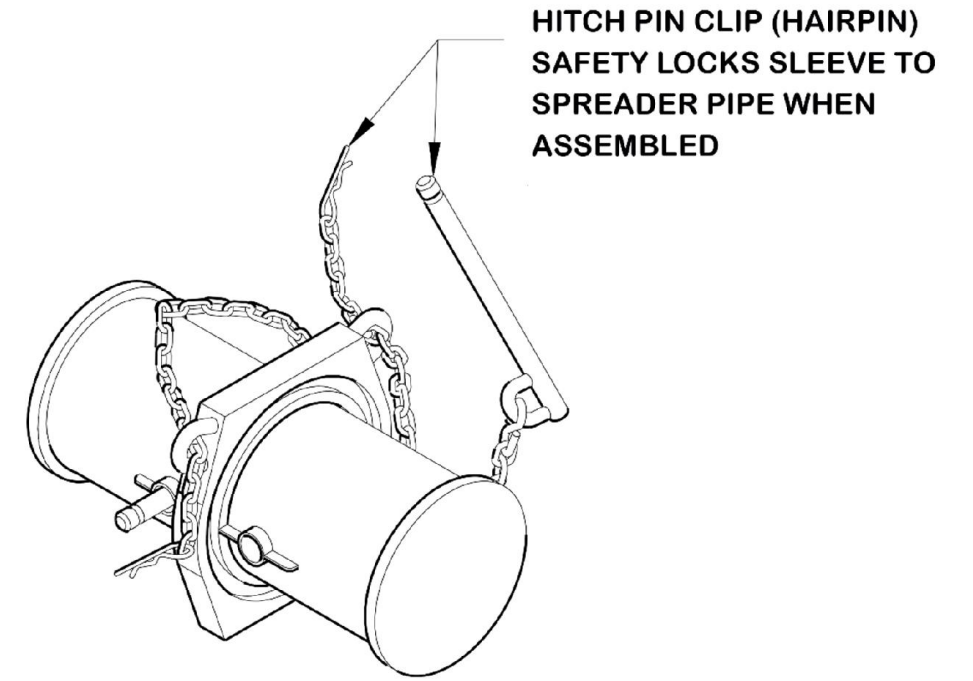


# Pipe Connection Sleeve (AG08A00-yyX-PA)

Cage Code: 65059 | Drawing No: SAG08A00 | Revision: C  
 UNLESS OTHERWISE SPECIFIED, DIMENSIONS ARE IN INCHES



TWO PINS AND CHAIN LANYARDS ARE SUPPLIED. CHAIN PASSES THRU WELDED STEEL LOOPS AS A RETAINER.



PART NO.	FOR SPREADER PIPE SIZE	A	B	C	D	E	F	L	PD	PL	WEIGHT
AG08A00-03X	3" NPS	4.13	1.05	.31	2.81	2.00	.25	9.62	.75	3.84	13.0 LB.
AG08A00-04X	4" NPS	5.25	1.05	.31	3.72	2.00	.25	10.62	.75	4.74	19.0 LB.
AG08A00-05X	5" NPS	5.97	1.05	.38	4.70	2.00	.25	11.76	.75	5.86	27.0 LB.
AG08A00-06X	6" NPS	7.50	1.05	.50	5.64	2.00	.37	13.00	.75	6.86	46.0 LB.
AG08A00-08X	8" NPS	9.69	1.05	.50	7.47	2.00	.37	17.00	.75	8.86	77.0 LB.
AG08A00-10X	10" NPS	12.00	1.05	.50	9.58	2.00	.50	20.00	.75	11.10	125.0 LB.
AG08A00-12X	12" NPS	14.12	1.61	.75	11.60	4.00	.50	22.50	1.00	13.13	220.0 LB.
AG08A00-14X	14" NPS	15.51	1.61	.75	12.80	4.00	.50	27.50	1.00	14.32	304.0 LB.
AG08A00-26X	26" NPS	28.50	2.07	1.00	24.68	6.00	.75	51.00	1.75	26.32	960.0 LB.
AG08A00-32X	32" NPS	34.00	2.07	1.25	30.62	7.00	1.00	62.50	1.75	34.00	1,845.0 LB.

To avoid lifter failure, potential death and property damage, never exceed WLL (Working Load Limit)

This document contains the proprietary information of Tandemloc, Inc. and your access and use shall be, and is at all times, pursuant to and limited by the Tandemloc, Inc. Terms of Use.

You shall not, and shall not encourage, assist, or authorize another party to copy, distribute, publically display, modify reverse engineer, decompile, or take any other action to reproduce this document or the information contained herein. © Copyright 2014 by Tandemloc, Inc.

Dimensions are subject to manufacturing tolerance and change.



Email: [info@tandemloc.com](mailto:info@tandemloc.com) • [www.tandemloc.com](http://www.tandemloc.com)

824 Highway 101 • Havelock, NC 28532

Tel: 1.800.258.7324 (252.447.7155)

FAX 1.800.892.3273 (252.447.5502)

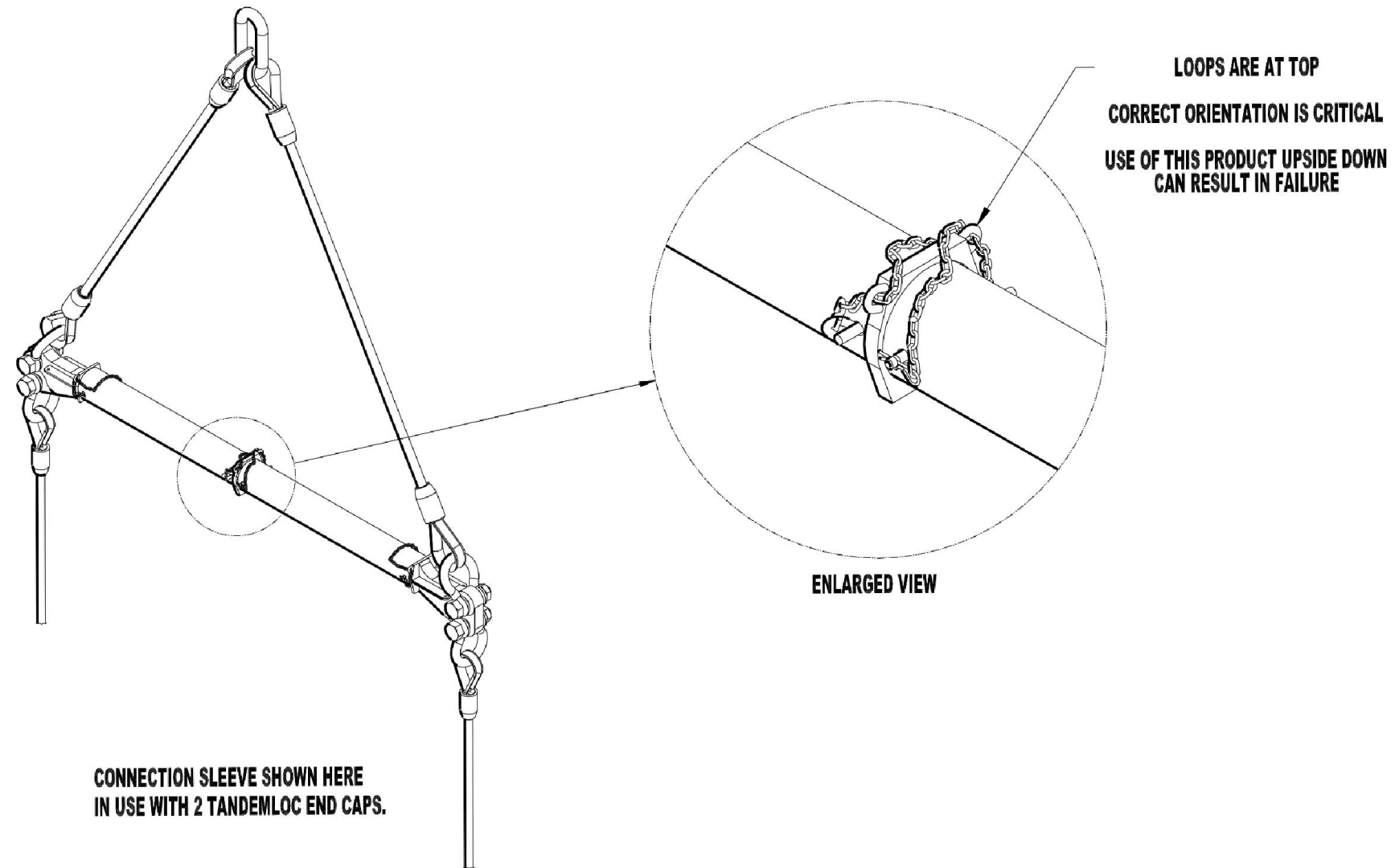
Tandemloc, Inc. designs, manufactures and tests lifting, securing and mobilizing components for all industries. See our website for details and important safety information.

Read all safety labels and instructions prior to use. Product to be used by qualified personnel only.

## Pipe Connection Sleeve (AG08A00-yyX-PA)

Cage Code: 65059 | Drawing No: SAG08A00 | Revision: C

UNLESS OTHERWISE SPECIFIED, DIMENSIONS ARE IN INCHES



To avoid lifter failure, potential death and property damage, never exceed WLL (Working Load Limit)

This document contains the proprietary information of Tandemloc, Inc. and your access and use shall be, and is at all times, pursuant to and limited by the Tandemloc, Inc. Terms of Use.

You shall not, and shall not encourage, assist, or authorize another party to copy, distribute, publically display, modify reverse engineer, decompile, or take any other action to reproduce this document or the information contained herein. © Copyright 2014 by Tandemloc, Inc.

Dimensions are subject to manufacturing tolerance and change.

**U.S.PATENT # 8,382,175 B2**



Email: [info@tandemloc.com](mailto:info@tandemloc.com) • [www.tandemloc.com](http://www.tandemloc.com)

824 Highway 101 • Havelock, NC 28532

Tel: 1.800.258.7324 (252.447.7155)

FAX 1.800.892.3273 (252.447.5502)

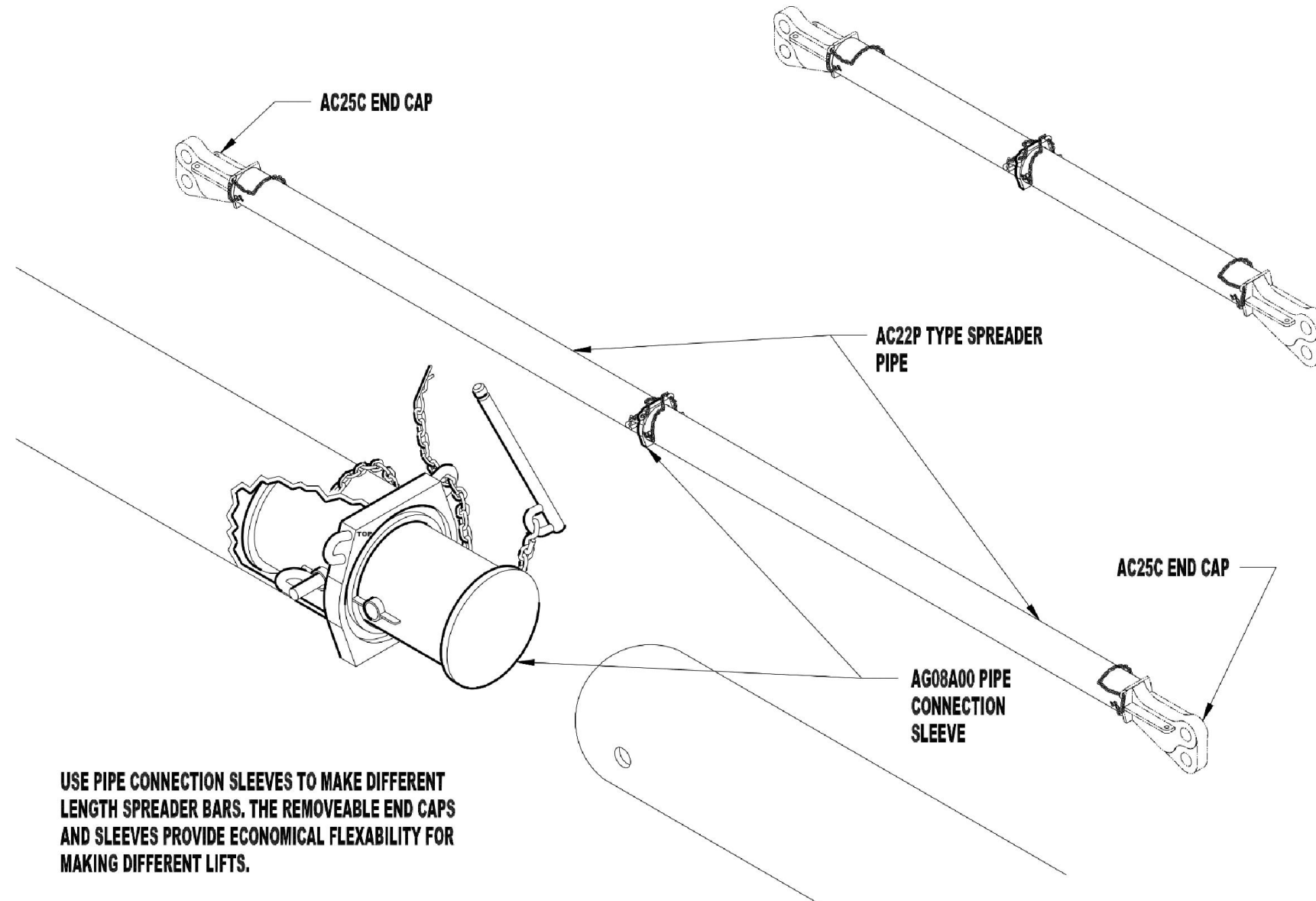
Tandemloc, Inc. designs, manufactures and tests lifting, securing and mobilizing components for all industries. See our website for details and important safety information.

Read all safety labels and instructions prior to use. Product to be used by qualified personnel only.

## Pipe Connection Sleeve (AG08A00-yyX-PA)

Cage Code: 65059 | Drawing No: SAG08A00 | Revision: C

UNLESS OTHERWISE SPECIFIED, DIMENSIONS ARE IN INCHES



USE PIPE CONNECTION SLEEVES TO MAKE DIFFERENT LENGTH SPREADER BARS. THE REMOVEABLE END CAPS AND SLEEVES PROVIDE ECONOMICAL FLEXABILITY FOR MAKING DIFFERENT LIFTS.

To avoid lifter failure, potential death and property damage, never exceed WLL (Working Load Limit)

This document contains the proprietary information of Tandemloc, Inc. and your access and use shall be, and is at all times, pursuant to and limited by the Tandemloc, Inc. Terms of Use.

You shall not, and shall not encourage, assist, or authorize another party to copy, distribute, publically display, modify reverse engineer, decompile, or take any other action to reproduce this document or the information contained herein. © Copyright 2014 by Tandemloc, Inc.

Dimensions are subject to manufacturing tolerance and change.

**U.S.PATENT # 8,382,175 B2**



Email: [info@tandemloc.com](mailto:info@tandemloc.com) • [www.tandemloc.com](http://www.tandemloc.com)

824 Highway 101 • Havelock, NC 28532

Tel: 1.800.258.7324 (252.447.7155)

FAX 1.800.892.3273 (252.447.5502)

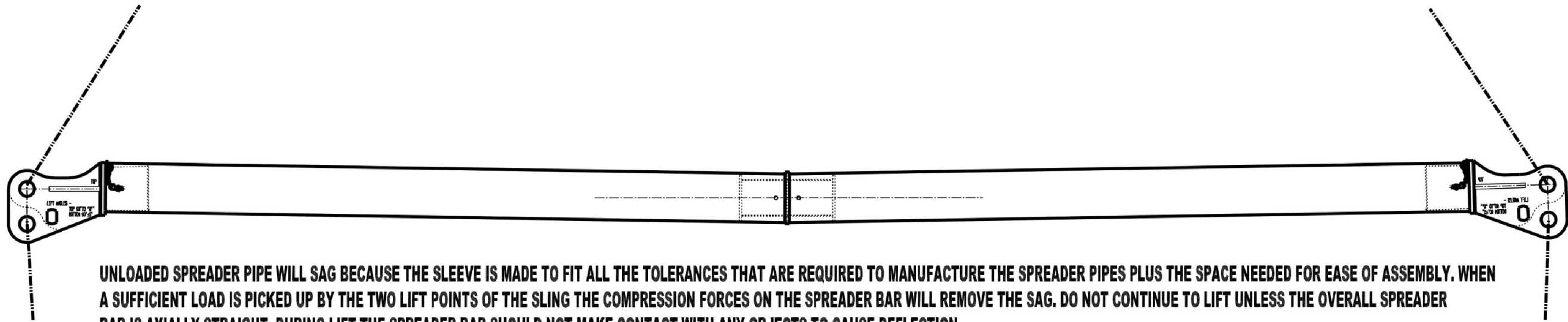
Tandemloc, Inc. designs, manufactures and tests lifting, securing and mobilizing components for all industries. See our website for details and important safety information.

Read all safety labels and instructions prior to use. Product to be used by qualified personnel only.

## Pipe Connection Sleeve (AG08A00-yyX-PA)

Cage Code: 65059 | Drawing No: SAG08A00 | Revision: C

UNLESS OTHERWISE SPECIFIED, DIMENSIONS ARE IN INCHES



UNLOADED SPREADER PIPE WILL SAG BECAUSE THE SLEEVE IS MADE TO FIT ALL THE TOLERANCES THAT ARE REQUIRED TO MANUFACTURE THE SPREADER PIPES PLUS THE SPACE NEEDED FOR EASE OF ASSEMBLY. WHEN A SUFFICIENT LOAD IS PICKED UP BY THE TWO LIFT POINTS OF THE SLING THE COMPRESSION FORCES ON THE SPREADER BAR WILL REMOVE THE SAG. DO NOT CONTINUE TO LIFT UNLESS THE OVERALL SPREADER BAR IS AXIALLY STRAIGHT. DURING LIFT THE SPREADER BAR SHOULD NOT MAKE CONTACT WITH ANY OBJECTS TO CAUSE DEFLECTION.

WHILE UNLOADED SAG DOES NOT IMPAIR THE LIFT CAPABILITY OF THE CONNECTION SLEEVES, IF DESIRED, THE UNLOADED SAG CAN BE REDUCED ONCE THE ACTUAL SPREADER PIPE CAN BE MEASURED. THE OUTER DIAMETER OF THE PIPE ENDS CAN HAVE STEEL SHIMS ADDED TO REDUCE SAG BY UP TO 50%. THE SUGGESTED METHOD IS SHOWN IN DETAIL "A". THIS IS AN EXTRA COST OPTION AND IS NOT INCLUDED IN THE PURCHASE PRICES.

To avoid lifter failure, potential death and property damage, never exceed WLL (Working Load Limit)

This document contains the proprietary information of Tandemloc, Inc. and your access and use shall be, and is at all times, pursuant to and limited by the Tandemloc, Inc. Terms of Use.

You shall not, and shall not encourage, assist, or authorize another party to copy, distribute, publically display, modify reverse engineer, decompile, or take any other action to reproduce this document or the information contained herein. © Copyright 2014 by Tandemloc, Inc.

Dimensions are subject to manufacturing tolerance and change.

**U.S.PATENT # 8,382,175 B2**



Email: [info@tandemloc.com](mailto:info@tandemloc.com) • [www.tandemloc.com](http://www.tandemloc.com)

824 Highway 101 • Havelock, NC 28532

Tel: 1.800.258.7324 (252.447.7155)

FAX 1.800.892.3273 (252.447.5502)

Tandemloc, Inc. designs, manufactures and tests lifting, securing and mobilizing components for all industries. See our website for details and important safety information.

Read all safety labels and instructions prior to use. Product to be used by qualified personnel only.